



Volume 28, Summer 2009



CHERRY CREEK CORRIDOR TRAIL IMPROVEMENTS A REALITY AT LAST!

Dean Pearson - The Architerra Group



Illustration courtesy of The Architerra Group

Construction of the Cherry Creek Corridor Trail Improvements between Holly and Oneida got underway earlier this year in mid-April!

This long-anticipated and much needed project will begin at the existing pedestrian bridge along the south side of the Creek adjacent to the Cook Park Recreation Center, pass under Monaco Parkway, and travel along the open space corridor on the south side of Cherry Creek between Monaco Parkway and Holly St. This multi-purpose trail

will then utilize a low water crossing to travel across the Creek bed to the north bank of the Creek, pass under the new Holly Street bridge and connect to the existing trail. The project will eliminate at grade street crossings of Holly Street and Monaco Parkway, which will create a much safer experience for trail users.

American Civil Constructors (ACC) has been selected as the general contractor and will be working aggressively to allow this 1.25 mile long, 10' wide concrete trail,

along with adjacent corridor improvements to be open for use in September of 2009.

Funding for the new Trail has been provided by the City and County of Denver, Great Outdoors Colorado, Urban Drainage and Flood Control District and the Greenway Preservation Trust.

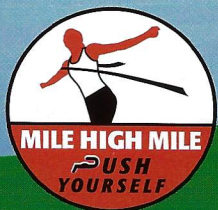
"A RIVER IS MORE THAN AN AMENITY, IT IS A TREASURE."

THE GREENWAY FOUNDATION

Planning, Building, Protecting and Enhancing Communities, Parks, Trails and Waterways
Since 1974

JUSTICE WM. O DOUGLAS





An Event with Altitude May 31, 2009

www.milehighmile.com

About the Race

The MILE HIGH MILE will begin and end at the State Capitol. The philosophy behind the race is to encourage individuals of all ages to PUSH themselves to their highest level of fitness and motivation and complete the MILE HIGH MILE as quickly as possible. Participants will be grouped based on age provided by the participants. Separate groupings will also occur for children ages 8 and under, 9-11 as well as two waves for young adults between the ages of 12-17. New to the 2009 MILE HIGH MILE will be an Untimed Family Wave that will 'kick-off' this year's event. A wheelchair and elite grouping will also occur at the end of the final wave of runners so that all other participants can witness the winners crossing the finish line. Those participating in the elite wave must state their qualifying times in the last twelve months. All wheelchair participants must be push rim, no handcranks will be permitted.

The MILE HIGH MILE will provide training tips in the weeks prior to the race through the Push Gym web site. Please visit their site at www.pushgym.com. The philosophy behind the MILE HIGH MILE will be to run hard, run well, and run fast!!!

Proceeds from the MILE HIGH MILE will benefit the Greenway Foundation, that, since 1974, has been planning, building, protecting and enhancing communities, parks, trails and waterways in the Denver Metro area.

Event Day Information

What: Denver's Premier One Mile Race

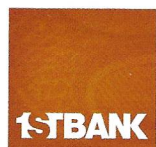
Where: The Colorado State Capitol Building in Denver, CO

When: May 31, 2009

4 Easy Ways to Register:

1. Online registration available at www.bkbltd.com.
2. In person from May 1st until 12:00 pm, May 29th at:
• Runner's Roost (Denver and Aurora)
3. Check payable to: The Greenway Foundation and mail the entry form (on the right) to: BKB Limited, PO Box 4184, Englewood, CO 80155
4. Race Day Registration begins at 6:45 am.

Event Sponsors



Office of the Governor



FITNESS & PHYSICAL THERAPY



The Colorado Health Foundation™



A Graphics Communication Company



Mile High Mile Entry Form

Bib Number: _____ (Official Use Only)

General Rules

- One registration form per person (photocopies are acceptable)
- Bibs are non-transferable
- No refunds
- Mail this form and your check payable to The Greenway Foundation and postmark by May 22, 2009 to:
BKB Limited, PO Box 4184, Englewood, CO 80155

Racer Information

Age on Race Day: _____ Male _____ Female _____ Wheelchair _____

(participants will automatically be assigned to their age group wave)

Elite: time for one mile: _____ (qualifying time one mile required)

Last Name: _____

First Name: _____

Address: _____

City: _____ State: _____ Zip: _____

Email: _____

Shirt Size: Adult: _____S _____M _____L _____XL _____XXL

Child: _____M _____L

Entry Fee

Participants Ages (18 yrs old & up) Pre-Race \$25 _____

Race Day \$30 _____

Participants Ages (17 yrs old & younger) Pre-Race \$25 _____

Race Day \$30 _____

Tax Deductible Donation for Mile High Mile Race \$ _____

Total Amount Enclosed: \$ _____

(please make checks payable to The Greenway Foundation)

Waiver & Release — I hereby certify the following: (1) I am physically fit and have received medical clearance to participate in the Mile High Mile; (2) On behalf of myself, my heirs, and assigns, I hereby waive and forever discharge the sponsors, organizers, affiliates, as well as their agents and employees from any and all claims that may accrue as the result of my participation; (3) I will do my best to avoid risks or creating risks to others; (4) I give my consent for medical treatment, should treatment for any accident or illness be required during the event; (5) I give permission for the future use of my name and picture for GWF events; and (6) I understand that there are no refunds.

Signature of Participant _____ Date _____

Signature of parent/guardian if participant is under 18 years old _____

SOUTH PLATTE RIVER

STUDENTS LEARN, ENJOY

THE SOUTH PLATTE RIVER

It is my profound pleasure to be completing my sixth year as the program director for SPREE. SPREE is truly a one of a kind program that makes a real difference in the lives of Denver's children. It has been a gift for me to be a part of this program and to see the impact that it makes first hand.

At the core of SPREE is the desire to connect the children of Denver with the history and natural beauty of their city through its greatest natural resource, the South Platte River. From the very birth of Denver, its citizens have relied on our River for life and livelihood. The gold that was panned in its sandy banks provided the currency upon which the City grew and thrived while the water that ebbed and flowed in its shallow channel nourished the life of the early pioneers on a daily basis. Even before the gold rush and city building began, the Arapahoe and Cheyenne came to the South Platte River to find their nourishment.

Despite this rich history of dependence on the South Platte River, the city and its citizens turned their back on this natural treasure as they allowed it to be neglected, polluted and abused. In 1974, however, a brave group of new pioneers decided that the South Platte River would be revitalized, rejuvenated, and restored. This effort, continuing even today, is part of the history and legacy of the South Platte River and

the city
This is
SPREE
to thro

In a
research
the link
and dis
outdoor
SPREE
Denver's
provides
experien
SPREE
wonder

SOUTH PLATTE RIVER ENVIRONMENTAL EDUCATION

STUDENTS LEARN, ENGAGE, EXPERIENCE, AND CREATE ALONG THE SOUTH PLATTE RIVER THROUGH SPREE

By Jolon Clark- SPREE Program Director

It is my profound pleasure to be completing my sixth year as the program director for SPREE. SPREE is truly a one of a kind program that makes a real difference in the lives of Denver's children. It has been a gift for me to be a part of this program and to see the impact that it makes first hand.

At the core of SPREE is the desire to connect the children of Denver with the history and natural beauty of their city through its greatest natural resource, the South Platte River. From the very birth of Denver, its citizens have relied on our River for life and livelihood. The gold that was panned in its sandy banks provided the currency upon which the City grew and thrived while the water that ebbed and flowed in its shallow channel nourished the life of the early pioneers on a daily basis. Even before the gold rush and city building began, the Arapahoe and Cheyenne came to the South Platte River to find their nourishment.

Despite this rich history of dependence on the South Platte River, the city and its citizens turned their back on this natural treasure as they allowed it to be neglected, polluted and abused. In 1974, however, a brave group of new pioneers decided that the South Platte River would be revitalized, rejuvenated, and restored. This effort, continuing even today, is part of the history and legacy of the South Platte River and



Photo courtesy of Jolon Clark

5th Grade Students learn about boating and look for fish in Overland Pond, adjacent to the South Platte River Greenway.

the city that is inextricably linked to it. This is the story and the heritage that SPREE reconnects Denver's children to through its programming.

In a hustle bustle world where research is increasingly showing the link between childhood obesity and disease to a decline in active outdoor time in natural settings, SPREE does more than just connect Denver's future with its past. SPREE provides opportunities for children to experience nature right in the City. SPREE strives to ignite a sense of wonder and a sense of place in children

whose lives are dominated by fast food and omnipresent opportunities for sedentary indoor entertainment.

SPREE strives to accomplish this through a unique approach that concentrates on repeated exposure and programming for the same children. Nine Denver Public Schools have adopted SPREE throughout their school so that each class comes on an excursion to the South Platte River each year. SPREE also provides additional activities and programming to these schools throughout the year

Continued on Page 4



Photo courtesy of Jolon Clark

The Fishing for Kids program offers students a chance to learn about the joys of fishing, while still in the City.

and helps the schools tie the South Platte River into every subject and area of the school. The result is a school atmosphere that is infused with the South Platte River and a community that is deeply connected to the River.

Here is a highlight of SPREE programming:

Kindergarten-5th Grade Excursions

The heart of SPREE is a series of excursions to the South Platte River that build on one another over six years. Starting with an introduction to the River in kindergarten, students develop a deep connection with the South Platte River through age-appropriate standards-based excursions built on the guidelines for effective environmental education. Over the course of these six years, students learn about habitat, plant identification, Colorado and Denver history, living and non living things,

water quality, ecology, and many other things. For more information about SPREE excursions visit: <http://spreeweb.org/excursions>

SPREE Force

Students have the option to extend their learning experience past these excursions and into their homes and neighborhoods by joining the SPREE Force. Students who join the SPREE Force receive periodic mail at school from SPREE's mascot, Chompers. Each mailing contains an action-based mission that teaches the students about the connection between the River and their neighborhood, and then encourages them to be active stewards in the protection of our City's greatest natural resource. Students earn South Platte River animal charms for their SPREE Force bracelet for each mission that they complete. SPREE Force is brought to SPREE kids through a partnership with FrontRange Earth Force. For more information

about the SPREE Force visit: <http://spreeforce.org>.

Fishing For Kids

Students from Denver's nine premier SPREE Schools have the opportunity to engage in an additional excursion to the South Platte River to learn how to fish. Overland Pond is stocked with hundreds of rainbow trout immediately before each fishing day. SPREE has partnered with the Division of Wildlife and ELK (Environmental Learning for Kids) to teach the students about fishing etiquette, aquatic ecology, fish handling, and careers in wildlife biology and natural resources. At the end of the day each student receives a fishing rod to keep and a goodie bag with fishing information and supplies. For many SPREE students, outdoor recreation activities like fishing are not accessible due to their socio-economic status. Fishing for Kids breaks down these barriers and makes fishing accessible to every kid.

Last fall, following a SPREE fishing outing at Overland Pond, I noticed a group of kids across the pond who were not coming back to load on the bus. I wandered over to see what was going on, only to find out that they were not with the SPREE School we had at the park on that day. They were, however, from one of the other SPREE Schools. As I chatted with them, I found that they had come on a SPREE fishing outing two weeks earlier. They were back for the third time in those three weeks to fish at the pond, and they were using the fishing rods and hooks that we had given them during their SPREE outing. These children had never been able to afford fishing rods of their own. Through SPREE they had connected to the South Platte River in a meaningful way that had led them to continue to

come back to spend time along its banks and to "hunt" for food just as generations of people had before them. For more information about Fishing for Kids visit: <http://spreeweb.org/fishingforkids>

Chompers' Challenge

SPREE is committed to encouraging an active outdoor lifestyle that engages Denver's children with nature and promotes happy healthy kids. Chompers' Challenge at the Mile High Mile (www.milehighmile.com) is a one-mile race that encourages kids to push themselves to get active, get outside, and get involved. Last year, over 100 children participated in the first ever Chompers' Challenge. In addition to promoting an active outdoor lifestyle, Chompers' Challenge provides kids from across Denver an opportunity to earn Chompers' Expedition Gear. This gear is designed to get kids off of the couch and outside to engage in active play in their backyard, their neighborhood parks, and along the South Platte River.

To ensure that every kid can participate in the race, the Chompers' Challenge Scholarship Fund was created. Through this fund, kids who cannot afford the race entry fee are granted scholarships and provided transportation to and from the event. For many of these children, it is the first time they have ever had the opportunity to participate in an organized sporting event. Last year a scholarship recipient, running in the only pair of shoes he owned, won his entire age bracket. For more information about Chompers' Challenge and the Mile High Mile visit: <http://spreeweb.org/milehighmile>

Art on the River

Each year, professional artists work with students from SPREE Schools to

Continued on Page 5

about the SPREE Force visit: <http://spreeforce.org>.

Fishing For Kids

Students from Denver's nine premier SPREE Schools have the opportunity to engage in an additional excursion to the South Platte River to learn how to fish. Overland Pond is stocked with hundreds of rainbow trout immediately before each fishing day. SPREE has partnered with the Division of Wildlife and ELK (Environmental Learning for Kids) to teach the students about fishing etiquette, aquatic ecology, fish handling, and careers in wildlife biology and natural resources. At the end of the day each student receives a fishing rod to keep and a goodie bag with fishing information and supplies. For many SPREE students, outdoor recreation activities like fishing are not accessible due to their socio-economic status. Fishing for Kids breaks down these barriers and makes fishing accessible to every kid.

Last fall, following a SPREE fishing outing at Overland Pond, I noticed a group of kids across the pond who were not coming back to load on the bus. I wandered over to see what was going on, only to find out that they were not with the SPREE School we had at the park on that day. They were, however, from one of the other SPREE Schools. As I chatted with them, I found that they had come on a SPREE fishing outing two weeks earlier. They were back for the third time in those three weeks to fish at the pond, and they were using the fishing rods and hooks that we had given them during their SPREE outing. These children had never been able to afford fishing rods of their own. Through SPREE they had connected to the South Platte River in a meaningful way that had led them to continue to

come back to spend time along its banks and to "hunt" for food just as generations of people had before them. For more information about Fishing for Kids visit: <http://spreeweb.org/fishingforkids>

Chompers' Challenge

SPREE is committed to encouraging an active outdoor lifestyle that engages Denver's children with nature and promotes happy healthy kids. Chompers' Challenge at the Mile High Mile (www.milehighmile.com) is a one-mile race that encourages kids to push themselves to get active, get outside, and get involved. Last year, over 100 children participated in the first ever Chompers' Challenge. In addition to promoting an active outdoor lifestyle, Chompers' Challenge provides kids from across Denver an opportunity to earn Chompers' Expedition Gear. This gear is designed to get kids off of the couch and outside to engage in active play in their backyard, their neighborhood parks, and along the South Platte River.

To ensure that every kid can participate in the race, the Chompers' Challenge Scholarship Fund was created. Through this fund, kids who cannot afford the race entry fee are granted scholarships and provided transportation to and from the event. For many of these children, it is the first time they have ever had the opportunity to participate in an organized sporting event. Last year a scholarship recipient, running in the only pair of shoes he owned, won his entire age bracket. For more information about Chompers' Challenge and the Mile High Mile visit: <http://spreeweb.org/milehighmile>

Art on the River

Each year, professional artists work with students from SPREE Schools to

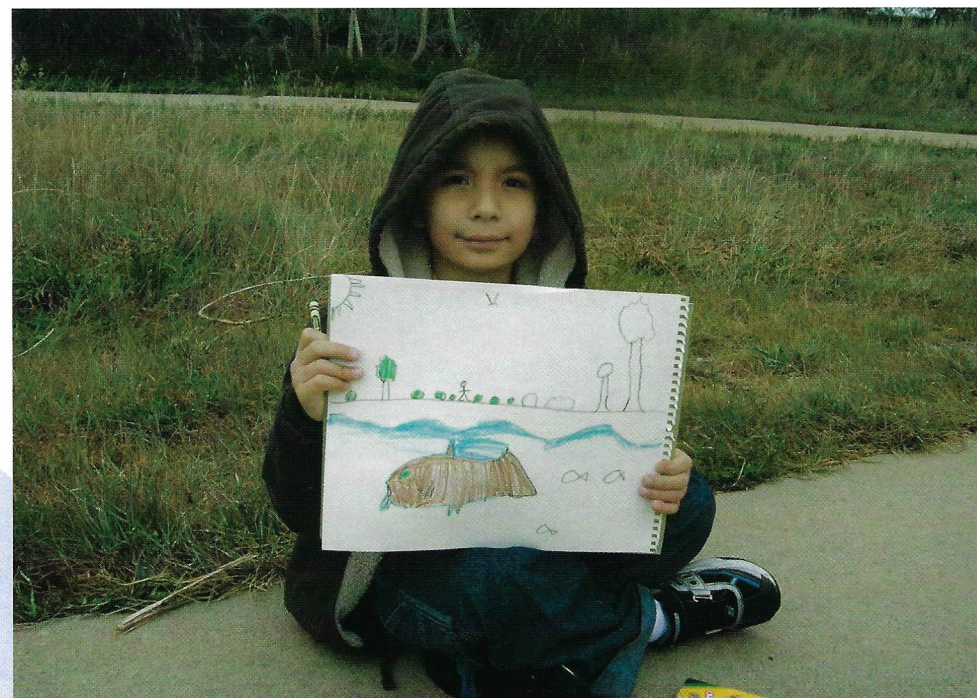


Photo courtesy of Jolon Clark

The Art on the River program allows students a creative interaction with the South Platte River.

create art focused on a specific area along the South Platte River. This art is then put on display at the Art Students League Gallery right next to art produced by professional artists along the same stretch of the river. For more information about Art on the River visit: <http://spreeweb.org/artontheriver>.

SPREE Schools Give Back

On September 26, 2009 students from all of Denver's SPREE Schools will come together to give back to the South Platte River as part of the Greenway Foundation's South Platte RiverSweep. Students will work together to pick up trash, plant trees, and build trails along the River. For more information about SPREE Schools Give Back visit: <http://test.spreeweb.org/spreeschoolsgiveback>

Support from individuals like you make SPREE possible. This funding is a crucial part of SPREE's continued effort to ensure that every child, no matter what their socio-economic status, is given opportunities to experience nature, learn about our shared history, live a healthy lifestyle, and experience the natural beauty of our world with their own hands. Through this first hand engagement, SPREE works to ensure that the future decision makers, voters, and citizens of Denver are educated about their history, engaged with their City's natural resources, and vigilant in fighting the apathy that once led to the neglect and abuse of the River that is our City's lifeblood.

Please consider making a difference in a child's life today by making a tax-deductible donation to SPREE at: <http://donate.spreeweb.org>

VENICE ON THE CREEK

DAYTIME FUN, EVENING ROMANCE!

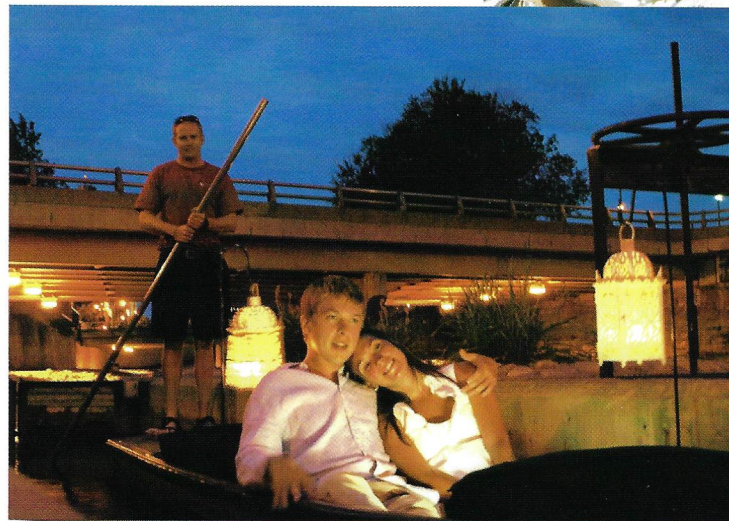
By J.J. Clark- Manager

Venice on the Creek offers unique modern and historic perspectives to Downtown Denver. While floating along the waters of Cherry Creek, customers learn the stories of Denver's growth from a western gold prospecting town into the flourishing urban center of today. They learn how Cherry Creek offered sustenance to the original settlements of St. Charles and Auraria, and later disaster to the log cabins of Denver. While relaxing on a 23 foot long punt and passing through Colorado's only working boat locks, customers experience how Denver's history is intricately connected to the Creek, including the buildings and bridges that are adjacent to Cherry Creek between Larimer St. and Confluence Park.

2009 marks Venice on the Creek's 14th year of historic and romantic boat tours on Cherry Creek in Downtown Denver. Over those 14 years, ridership has consistently grown and the banks have seen nothing short of a booming restoration. The land adjacent to Cherry Creek from Larimer St. to Confluence Park has gone from neglected fields and rail yards to high-end residential buildings, corridors of recreation and even Denver's new Museum of Contemporary Art. In those same years, Venice on the Creek has grown from a little known amenity to a vital aspect of Downtown Denver's active outdoor culture.

The high school and college aged guides that operate the punts on Venice on the Creek offer a one-of-a-kind recreational and entertainment venue along this historic body of water while also assisting in the maintenance and enhancement of this treasured waterway.

Reservations can be made online at www.veniceonthecreek.com or over the phone at 303-893-0750. From the website you can check prices, look over the calendar for open reservations, make the reservation, and verify the reservation.



Daytime photo courtesy of digpicphoto.com

Evening photo courtesy of J.J. Clark

Venice on the Creek operates Thursday-Sunday evenings from 5:00-9:30pm, and Wednesday's during the day for Group Charter Rides of 3 Boats or more from

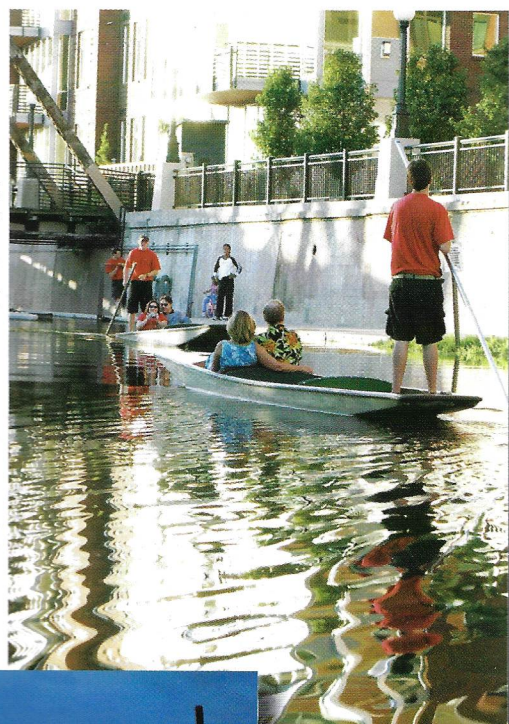
10:00am-4:00pm based on customer needs. Group Charter rides must be booked at least 2 weeks ahead of time. Details of the Group Charter Rides can be found on the website.

Every boat has 3 benches that seat 2-averaged sized adults. Prices per Bench are for 2-people, but a Private Boat that would sit 6-people may be reserved as well. We offer Full Rides (40-50 minutes) at \$30/Bench for Adults and \$25/Bench for Seniors and Children. Half Rides (35-45 minutes) are \$20/Bench for Adults and \$15/Bench for Seniors and Children. Private Boats are priced at a flat rate of \$75 for a Full Ride and \$50 for a Half Ride. Group Charter Full Rides on Wednesday are priced per boat (six people) at \$125 for a Full Ride for adults and \$100 for Seniors and Children. The Group Charter Half Ride is priced per boat at \$100 for Adults and \$75 for Seniors and Children.

As people float down Cherry Creek on our Punts, the often neglected connection between an urban community and the environment is brought enjoyably to the forefront. As the banks of the Cherry Creek become increasingly popular residential and recreational areas, Venice on the Creek continues to revitalize Cherry Creek and remind Denver of both its humble beginnings and current vitality.

**Please visit us online at
www.veniceonthecreek.com**

Continued on Page 7



Daytime photo courtesy
of digpicphoto.com



Evening photo courtesy
of J.J. Clark

Every boat has 3 benches that seat 2-averaged sized adults. Prices per Bench are for 2-people, but a Private Boat that would sit 6-people may be reserved as well. We offer Full Rides (40-50 minutes) at \$30/Bench for Adults and \$25/Bench for Seniors and Children. Half Rides (35-45 minutes) are \$20/Bench for Adults and \$15/Bench for Seniors and Children. Private Boats are priced at a flat rate of \$75 for a Full Ride and \$50 for a Half Ride. Group Charter Full Rides on Wednesday are priced per boat (six people) at \$125 for a Full Ride for adults and \$100 for Seniors and Children. The Group Charter Half Ride is priced per boat at \$100 for Adults and \$75 for Seniors and Children.

As people float down Cherry Creek on our Punts, the often neglected connection between an urban community and the environment is brought enjoyably to the forefront. As the banks of the Cherry Creek become increasingly popular residential and recreational areas, Venice on the Creek continues to revitalize Cherry Creek and remind Denver of both its humble beginnings and current vitality.

Please visit us online at
www.veniceonthecreek.com

Advertise with Venice on the Creek!



Venice on the Creek operates along Cherry Creek between Larimer St. and Confluence Park in Lower Downtown Denver. This ten block section of the Creek witnesses thousands of bikers, runners and walkers enjoying the trails each day along the Creek, as well as those relaxing on their punt ride on Venice on the Creek throughout the summer.

Venice on the Creek is now offering exciting advertising opportunities along the Creek on both of the train cars above the Creek, located on the Delgany St. bridge as well as on each of our punts and the ticket booth adjacent to Larimer Square.

For more information about these unique and highly visible advertising opportunities, contact us at:

Phone: 303.893.0750

Email: advertise@veniceonthecreek.com

VENICE ON THE CREEK

\$5 Off Any Boat Ride

Reservation Required
(Limit 1 per reservation)



Reservations may be made by phone or on the web

Phone: 303-893-0750

Fax: 303-785-5695

email: info@veniceonthecreek.com

www.veniceonthecreek.com

operates from Tuesday's Charter from 10:00am-4:00pm based on customer needs. Group Charter rides must be booked at least 2 weeks ahead of time. Details of the Group Charter Rides can be found on the website.

Continued on Page 7

SPECIAL EVENTS 2009

SUMMER FUN ON THE RIVER

By Cindy Shoemaker-Special Events Coordinator

MILE HIGH MILE

The Greenway Foundation's Summer of Fun officially will start on May 31, 2009 with our newest event, the Mile High Mile. Come join several hundred of Metro Denver's residents of all ages as they PUSH themselves to run one mile at a mile high in and around the State Capitol. New this year is the Chompers' Challenge, an un-timed family wave where parents can run with their children, and then, if they so choose, run a timed wave within their age group later in the morning. This event has been made possible through the generous support of the event's sponsors, including: **1st Bank, The State of Colorado-the Office of the Governor, The Colorado Health Foundation, PUSH Gym, American Solutions for Business, Fox 31 News, Sportsradio 104.3 FM The Fan, Denver Magazine, Vitamin Water, and Powerade.** All proceeds from the Mile High Mile will benefit the Greenway Preservation Trust. For additional information, please turn to Page 2 of the Greenway Current or visit us online at www.milehighmile.com.

CONFLUENCE CONCERTS

Confluence Park will once again be the place to be on Thursday evenings in July this summer thanks to the generosity of the Confluence Concert series corporate sponsors including: **1st Community Bank, Riverfront Park Community Foundation,** and our newest sponsor, **Wright Water**

Engineers. The Greenway Foundation is delighted to have **KUVO 89.3** join us yet again as the series Radio Sponsor and welcomes **Breckenridge Brewery, Corks the Wine Store, and Vitamin Water** as the Beverage Sponsors for the series. Additional sponsorship and support is being

provided by **Denver Parks and Recreation Dept., SCFD, Denver Magazine** and the **Greenway Preservation Trust.** Travel down to the River for a fun, relaxing evening and listen to great music of four



different varieties, while enjoying nice and cold LOCAL beer and wine, along with good food from Denver's own **Tamales by La Casita**, voted best tamales in 5280 Magazine.

Get to Confluence Park early and add to the enjoyment of the evening with an excursion on **Venice on the Creek** before the concert or after the show for an evening of romance on the ever popular candlelight rides. Special arrangements can be made with Venice on the Creek to arrive and depart from the concert site. For more information on Venice on the Creek, please call the concession booth at **303-893-0750** or visit online at www.veniceonthecreek.com. Parking will be available for a small fee at the Downtown Aquarium.

Featured performers for **Confluence Concerts 2009** are:

- July 2- Shuffletones (Blues)**
- July 9- Eric Trujillo and the Mambotets (Latin Jazz)**
- July 16- Donna Angelle and the Zydeco Posse (Zydeco directly from Louisiana)**
- July 23- Dotsero (a longtime favorite)**

Continued on Page 9

Carryin
into Au
family
Flicks.
movies
screen
amphit
increas
is made
sponso
includin
Park
S2 Co
and
Brecke
the W
Denve
Green



provided by **Denver Parks and Recreation Dept., SCFD, Denver Magazine** and the **Greenway Preservation Trust**. Travel down to the River for a fun, relaxing evening and listen to great music of four different varieties, while enjoying nice and cold LOCAL beer and wine, along with good food from Denver's own **Tamales by La Casita**, voted best tamales in 5280 Magazine.



Get to Confluence Park early and add to the enjoyment of the evening with an excursion on **Venice on the Creek** before the concert or after the show for an evening of romance on the ever popular candlelight rides. Special arrangements can be made with Venice on the Creek to arrive and depart from the concert site. For more information on Venice on the Creek, please call the concession booth at **303-893-0750** or visit online at **www.veniceonthecreek.com**. Parking will be available for a small fee at the Downtown Aquarium.

Featured performers for **Confluence Concerts 2009** are:

- July 2- Shuffletones (Blues)**
- July 9- Eric Trujillo and the Mambotets (Latin Jazz)**
- July 16- Donna Angelle and the Zydeco Posse (Zydeco directly from Louisiana)**
- July 23- Dotsero (a longtime favorite)**

RIVER FLICKS

Carrying Thursday night entertainment into August is the return of four free family movie nights known as River Flicks. As the sun sets in LoDo, movies will begin on a large movie screen at the base of the grass amphitheatre at Confluence Park. This increasingly popular free movie series is made possible due to the corporate sponsorship of the River Flicks series including: **1st Bank, Riverfront Park Community Foundation, S2 Corporation, Denver Parks and Recreation Dept., SCFD, Breckenridge Brewery, Corks the Wine Store, Vitamin Water, Denver Magazine** and the **Greenway Preservation Trust**.

Event Photos courtesy of J.J. Clark



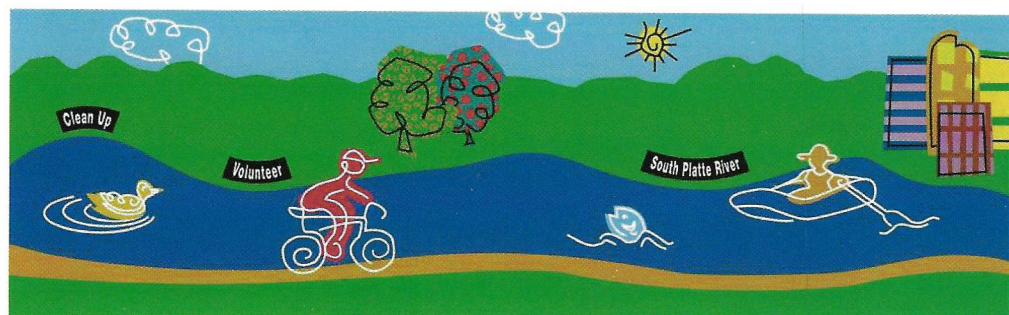
This year's movie choices are:

August 6- Transformers
August 13- The Iron Giant
August 20- The Italian Job
August 27- Young Frankenstein

If you missed the opportunity for a ride on **Venice on the Creek** for the Confluence Concerts, you can make it up in August on the night of the River Flicks. Get to Confluence Park early and add to the enjoyment of the evening with an excursion on Venice on the Creek before the movie for an evening of romance on the ever popular candlelight rides. Parking will be available for a small fee at the Downtown Aquarium.

Continued on Page 9

Continued on Page 10



SOUTH PLATTE RIVER SWEEP

Beverages and food will once again be offered during the River Flicks series thanks to the Beverage Sponsorship of **Breckenridge Brewery, Corks the Wine Store and Vitamin Water. Tamales and burritos from La Casita, and popcorn/candy from the Greenway Foundation** will also be available.

SOUTH PLATTE RIVERSWEEP

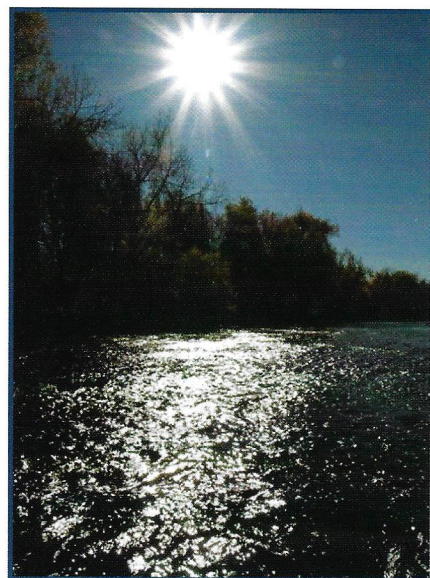
Saturday, September 26, 2009 will celebrate the 17th Annual South Platte RiverSweep. Each year over 375 volunteers help remove trash and debris along the banks and trails of the South Platte. In addition, volunteers help with trail construction, graffiti removal, tree protection and willow harvesting/relocation. These

varied and vital activities will return as part of RiverSweep 2009 along with other needed efforts to maximize the environmental and recreational value of the South Platte River and Cherry Creek.

This longstanding and much-needed community day is made possible through the generous sponsorship of: **1st Bank, Riverfront Park Community Foundation and S2 Corporation.** In addition, numerous partner organizations work with the Foundation to make this great day a reality including: **Denver Parks and Recreation Volunteer Office, REI Flagship Store, SCFD, United Site Services, Trout Unlimited, Urban Drainage and Flood Control District, and the Downtown Aquarium.**

As has been the tradition, participants in South Platte RiverSweep will be provided with numerous food and beverage options, at both the beginning and end of the event, thanks to the generosity of **Whole Foods, La Casita, Starbucks and Vitamin Water.**

To learn more about how to sign up to be a part of this year's South Platte RiverSweep, visit the South Platte RiverSweep section of the Greenway Foundation's website at **www.greenwayfoundation.org/home/riversweep.html**. Bring your families, friends and co-workers to help us clean and improve our Urban Waterways.



ART STUDENTS LEAGUE OF DENVER

art on the River

Join us September 14th-29th
at Grant Frontier Park
to create Art on the River.

THE GREENWAY FOUNDATION
Preserving Metro Denver's Urban Waterways Since 1974

Call for entries for this juried exhibit available
at www.ASLD.org or by calling 303-778-6990.

CHERRY CREEK

The Cherry Creek Stewardship Partners (CCSP) has been "providing a forum for the stewardship of Cherry Creek Watershed" for over ten years. In the time since the CCSP hosted its first Cherry Creek watershed forum in 1999, it has enjoyed a successful collaboration with an increasing number of agencies, jurisdictions, individuals and businesses from Douglas County, Arapahoe County and the City and County of Denver.

In 2008, the CCSP established a relationship with the Greenway Foundation (Foundation) to serve as CCSP's fiscal agent. The partnership is a natural fit in that CCSP has been hosting service learning projects along the South Platte and Cherry Creek in coordination with the Foundation for several years. Thanks to this new partnership, the CCSP can continue to provide hands on service to the Cherry Creek community with the Foundation providing administrative support. Or, in the words of one of our Executive Committee members: "Whatever we do, it's got to be FUN." So we have some fun and leave the paperwork to the Foundation!

But just what is the CCSP? In summary, the CCSP is a watershed group employing a part-time watershed coordinator actively supported by individual citizens and representatives



Cherry Creek
and be

from
and fe
agencie
histori
the bus
is to p
for ac
through
control
This g
regular
and o
to cons
integra

CHERRY CREEK STEWARDSHIP PARTNERS

A NEW PARTNERSHIP

By Casey Davenhill- Watershed Coordinator,
Cherry Creek Stewardship Partners



As has been the tradition, participants in South Platte RiverSweep will be provided with numerous food and beverage options, at both the beginning and end of the event, thanks to the generosity of **Whole Foods, La Casita, Starbucks and Vitamin Water.**

To learn more about how to sign up to be a part of this year's South Platte RiverSweep, visit the South Platte RiverSweep section of the Greenway Foundation's website at **www.greenwayfoundation.org/home/riversweep.html**. Bring your families, friends and co-workers to help us clean and improve our Urban Waterways.

The Cherry Creek Stewardship Partners (CCSP) has been "providing a forum for the stewardship of Cherry Creek Watershed" for over ten years. In the time since the CCSP hosted its first Cherry Creek watershed forum in 1999, it has enjoyed a successful collaboration with an increasing number of agencies, jurisdictions, individuals and businesses from Douglas County, Arapahoe County and the City and County of Denver.

In 2008, the CCSP established a relationship with the Greenway Foundation (Foundation) to serve as CCSP's fiscal agent. The partnership is a natural fit in that CCSP has been hosting service learning projects along the South Platte and Cherry Creek in coordination with the Foundation for several years. Thanks to this new partnership, the CCSP can continue to provide hands on service to the Cherry Creek community with the Foundation providing administrative support. Or, in the words of one of our Executive Committee members: "Whatever we do, it's got to be FUN." So we have some fun and leave the paperwork to the Foundation!

But just what is the CCSP? In summary, the CCSP is a watershed group employing a part-time watershed coordinator actively supported by individual citizens and representatives



Photo courtesy of Casey Davenhill

Cherry Creek Stewardship Partners provides unique outings along the Creek, both above and below the Cherry Creek Reservoir, including tours of Centennial Gardens, located adjacent to Confluence Park in Denver.

from land use jurisdictions, state and federal resource management agencies, conservation, recreation and historic preservation groups as well as the business community. CCSP's goal is to promote innovative approaches for achieving better water quality through the use of stormwater runoff controls and open space protection. This goal is achieved by providing regular information-sharing forums and opportunities for participants to consider ways to coordinate and integrate projects and activities that

affect water resources.

In addition, each year the Board, staff and volunteers of CCSP:

- Plan and host hikes, walks and tours to learn more about plants and animals that make their home along Cherry Creek;
- Provide opportunities for area schools to explore the ecology of the local landscape through an annual teacher training workshop, sponsored field trips and classroom visits;

Continued on Page 12

ART STUDENTS
LEAGUE
OF DENVER

River



THE GREENWAY FOUNDATION
Preserving Metro Denver's Urban Waterways Since 1974

Call for entries for this juried exhibit available
at www.ASLD.org or by calling 303-778-6990.



Photo courtesy of Casey Davenhill

Denver Parks' staff share their expertise and time as Crew Leaders for service projects.

- Provide judges and other assistance for local and regional science fairs, and promote water education at the Colorado Science Teachers Convention;
- Plan, host and supervise young volunteers from Americorps, Boy Scouts and Girl Scouts, along with other community groups to perform service learning projects like planting, weeding, monitoring, stream stabilization and light construction;
- Host an annual conference and periodic training workshops highlighting water quality topics and featuring local experts in fields ranging from analysis of data to volunteer management;
- Host the annual Run for the Watershed, a fifty mile relay™ race that winds through the Cherry Creek valley and ends with a grand finish at Cherry Creek State Park (we hope one day to extend the race all the way to Shoemaker Plaza at Confluence Park).

Promoting regional cooperation and building on significant regional

assessment efforts has allowed the CCSP to remain a vibrant source of energy and support for directing the goodwill and active stewardship of the Cherry Creek watershed. The ongoing challenge is to remain viable and useful to CCSP's member partners who support the Partners by providing leadership, funding and expertise. While always being mindful of budgetary and time constraints, balancing the interests of multiple stakeholders and the complexity of relationships and responsibilities may be CCSP's biggest test.

CCSP thanks the Greenway Foundation for providing a "financial home" for the organization and also wishes to acknowledge the hard work and support of agency staff like Denver Parks & Recreation, Rivers and Trails Division who support each of the CCSP's volunteer projects with expertise, tools and supplies. In addition, these hard work individuals volunteer their off-duty time to serve as Crew Leaders for large volunteer

efforts like Greenway Foundation's South Platte River Sweep (refer to page 10 within this Newsletter). A special THANK YOU goes out to Lesley Roper and Chad Anderson with Denver Parks and Recreation for keeping the service learning project volunteers busy and safe on the trails.

Past participants in any of the CCSP's tours, workshops, projects or mentoring opportunities over this past year will soon be contacted by CCSP staff and volunteers about this year's agenda. Anyone that has been meaning to put together a team for the Run for the Watershed, volunteer as a Science Fair Judge or come out to "bother the butterflies", 2009 is YOUR year!

Readers are encouraged to review the CCSP's annual report at **www.cherry-creek.org** or contact Casey Davenhill, at: **casey@cherry-creek.org**

LONG RANGE OUTRE CREATING A R



Proposed

THE RIVER NORTH (RINO) and RIVER SOUTH (RISO) GREENWAY MASTER PLANS

By Merle Grimes, Merle D. Grimes, LLC

In March of 2008, the Greenway Foundation, in partnership with the City and County of Denver Parks and Recreation Department, initiated the River North (RINO) Greenway Master Plan. The RINO Plan encompasses the approximate three miles of the South Platte River between the City of Cuernavaca Park at 20th Street and the northern boundary of the City and County of Denver adjacent to Riverside Cemetery. The purpose of the plan is

to build
that ha
1970's
to "Re
Denver
can be

The
reach
nature.
opport
from t
Conflue
Unique
as TAX
Cab sit
the bar



Photo courtesy of Casey Davenhill
New Leaders for service projects.

ed the efforts like Greenway Foundation's South Platte River Sweep (refer to page 10 within this Newsletter). A special THANK YOU goes out to Lesley Roper and Chad Anderson with Denver Parks and Recreation for keeping the service learning project volunteers busy and safe on the trails.

Past participants in any of the CCSP's tours, workshops, projects or mentoring opportunities over this past year will soon be contacted by CCSP staff and volunteers about this year's agenda. Anyone that has been meaning to put together a team for the Run for the Watershed, volunteer as a Science Fair Judge or come out to "bother the butterflies", 2009 is YOUR year!

Readers are encouraged to review the CCSP's annual report at www.cherry-creek.org or contact Casey Davenhill, at: casey@cherry-creek.org

to serve
unteer

LONG RANGE OUTREACH AND PLANNING CONTINUES

CREATING A RENEWED VISION FOR OUR RIVER

By Merle Grimes, Merle D. Grimes, LLC
and Marge Price/David Howlett, Capiol Representatives



Illustration courtesy of The Cole Company

Proposed River Plaza along the RINO Corridor.

THE RIVER NORTH (RINO) and RIVER SOUTH (RISO) GREENWAY MASTER PLANS

By Merle Grimes, Merle D. Grimes, LLC

In March of 2008, the Greenway Foundation, in partnership with the City and County of Denver Parks and Recreation Department, initiated the River North (RINO) Greenway Master Plan. The RINO Plan encompasses the approximate three miles of the South Platte River between the City of Cuernavaca Park at 20th Street and the northern boundary of the City and County of Denver adjacent to Riverside Cemetery. The purpose of the plan is

to build upon greenway improvements that have been completed since the 1970's and to identify opportunities to "Renew Our Vision" of what the Denver South Platte River Greenway can be in the future.

The existing character of this reach of the River is industrial in nature. However, new development opportunities are already spreading from the Central Platte Valley near Confluence Park into the RINO area. Unique mixed-use developments such as TAXI located on the old Yellow Cab site have found success along the banks of the River by providing

a blend of residential living amongst commercial office space. Additional mixed-use developments are either being planned or have begun construction. New developments within RINO provide both challenges and opportunities for Denver's South Platte River Greenway.

Consequences of this anticipated increased development, including increased stormwater runoff due to more roadways, parking lots and rooftops, will need to be managed to prevent flooding, erosion and pollution.

Continued on Page 14

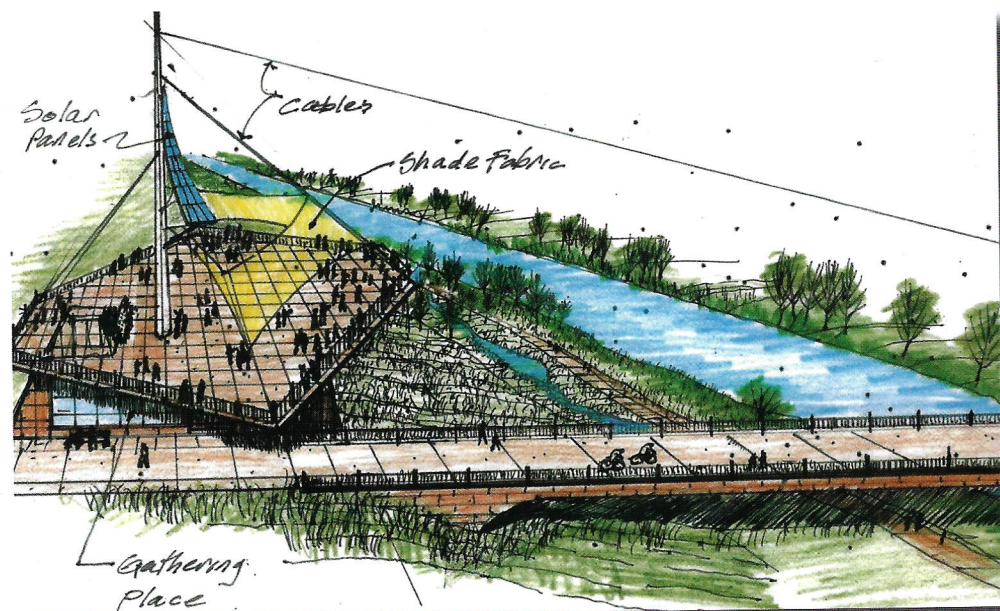


Illustration courtesy of The Cole Company

Proposed Pedestrian Plaza Bridge along the RINO Corridor.

Increasing numbers of residents living along the South Platte River will also result in the need for new recreational amenities and additional open space. The River's fragile ecosystem will also have new stresses placed upon it as a result of this growth. In order to enhance and protect the River for flood control, recreation and wildlife, additional acreage adjacent to the River will need to be obtained through engaging the adjacent landowners in a manner that is of mutual benefit to both the landowner and River, allowing for increased park, open space and improved water quality opportunities.

Opportunities with the RINO Greenway corridor abound. Working with developers, landowners and citizens, the master plan has identified opportunities for improving the existing greenway and greenway amenities. Improvements such as updating and expanding existing parks and trails, providing safe, non-motorized connections between the greenway and residential areas, increasing open space and wildlife

habitat, providing ecological buffers between development and the River, widening and laying back the river bank to make it more stable and accessible, and improving water quality by filtering stormwater through wetlands before it enters the river are all important recommendations in the master plan.

During workshops with the public, we also learned that there was a strong desire to make the RINO corridor more vibrant with activities such as recreation, entertainment, and art. In response to this need, the master plan recommends significant opportunities within the Denver Coliseum and National Western Stock Show properties. Recommendations include a new regional park with a white water boating feature, an outdoor concert amphitheater, a new multi-story parking structure, and a pond that captures stormwater and filters it through wetlands. The entire site would become accessible through non-motorized trails and an RTD commuter rail station as well as

its current vehicular accessibility due to its location near the intersection of I-25 and I-70.

The successful master plan would not have been possible if it were not for the strong collaborative partnership between the Greenway Foundation and the City and County of Denver, in particular Gordon Robertson, Director and Devon Buckels, Senior Planner with Denver Parks Planning. The Greenway Foundation would also like to recognize the entire Project Planning Team for their many hours of hard work and dedication in the creation of the RINO Greenway Master Plan, including their many hours of donated time and materials.

- . Merle D. Grimes, LLC – Planning Team Coordinator, Lead Planner/Designer and Biologist
- . THK Associates – Urban Planning and Graphics
- . CDM – Water Quality and Hydrology
- . Capitol Representatives – Public and Stakeholder Outreach and Input
- . Community Planning Services, LLC – Planning Support and Mapping
- . The Trust for Public Land – Land Acquisition Issues
- . The Cole Company – Design and Graphics
- . McLaughlin WhiteWater Design Group – Water Recreation Engineering

The RINO Greenway Master Plan was completed in March, 2009 and can be viewed on the City and County of Denver, Park and Recreation Department website.

The press that was printing the RINO Greenway Master Plan had not stopped running when the Greenway Foundation launched the River South

Greenway Master Plan on April 1, 2009. Also known as RISO, the Plan is the southern extension of the River North Greenway Master Plan effort that was completed on April 3, 2009. The RISO Greenway Master Plan involves the section of the South Platte River between 20th Street and the southern city boundary of Denver.

As is the case with the River North (RINO) Greenway Master Plan, the River South (RISO) Greenway Master Plan will establish a Renewed Vision for the South Platte River and provide recommendations to improve parks and recreation, water quality, water conservation, river stability, wildlife habitat, non-motorized transportation, connectivity to neighborhoods and businesses, and accessibility.

Partnering with the Greenway Foundation in the funding and creation of the RISO Greenway Master Plan are: the Colorado Water Conservation Board, Denver Public Works (Wastewater), Urban Drainage & Flood Control District, Denver Parks & Recreation, and Denver Water.

We thank these agencies for their generous financial support and time commitment to ensure that the South Platte River continues to be Denver's premier recreation and open space amenity.

The RISO Plan planning effort will be completed at the end of November, 2009. Two public community meetings to garner citizen input for the increased enhancement of our City's Greatest Natural Resource are scheduled in July and September. Details on the date, time, and location for the public meetings will be posted

Continued on Page 15

its current vehicular accessibility due to its location near the intersection of I-25 and I-70.

The successful master plan would not have been possible if it were not for the strong collaborative partnership between the Greenway Foundation and the City and County of Denver, in particular Gordon Robertson, Director and Devon Buckels, Senior Planner with Denver Parks Planning. The Greenway Foundation would also like to recognize the entire Project Planning Team for their many hours of hard work and dedication in the creation of the RINO Greenway Master Plan, including their many hours of donated time and materials.

- . Merle D. Grimes, LLC – Planning Team Coordinator, Lead Planner/Designer and Biologist
- . THK Associates – Urban Planning and Graphics
- . CDM – Water Quality and Hydrology
- . Capitol Representatives – Public and Stakeholder Outreach and Input
- . Community Planning Services, LLC – Planning Support and Mapping
- . The Trust for Public Land – Land Acquisition Issues
- . The Cole Company – Design and Graphics
- . McLaughlin WhiteWater Design Group – Water Recreation Engineering

The RINO Greenway Master Plan was completed in March, 2009 and can be viewed on the City and County of Denver, Park and Recreation Department website.

The press that was printing the RINO Greenway Master Plan had not stopped running when the Greenway Foundation launched the River South

Greenway Master Plan on April 1, 2009. Also known as RISO, the Plan is the southern extension of the River North Greenway Master Plan effort that was completed on April 3, 2009. The RISO Greenway Master Plan involves the section of the South Platte River between 20th Street and the southern city boundary of Denver.

As is the case with the River North (RINO) Greenway Master Plan, the River South (RISO) Greenway Master Plan will establish a Renewed Vision for the South Platte River and provide recommendations to improve parks and recreation, water quality, water conservation, river stability, wildlife habitat, non-motorized transportation, connectivity to neighborhoods and businesses, and accessibility.

Partnering with the Greenway Foundation in the funding and creation of the RISO Greenway Master Plan are: the Colorado Water Conservation Board, Denver Public Works (Wastewater), Urban Drainage & Flood Control District, Denver Parks & Recreation, and Denver Water.

We thank these agencies for their generous financial support and time commitment to ensure that the South Platte River continues to be Denver's premier recreation and open space amenity.

The RISO Plan planning effort will be completed at the end of November, 2009. Two public community meetings to garner citizen input for the increased enhancement of our City's Greatest Natural Resource are scheduled in July and September. Details on the date, time, and location for the public meetings will be posted



Illustration courtesy of The Cole Company

Major River Gateway along the RINO Corridor.

on the Greenway Foundation web site at www.greenwayfoundation.org by July 1, 2009.

The RISO Greenway Master Plan is part of an overall Greenway Foundation initiative to plan and ultimately begin implementing the recommended significant improvements and amenities on the South Platte River within the City and County of Denver by 2012.

GOCO (GREAT OUTDOORS COLORADO) PLANNING GRANT

By Marge Price and David Howlett, Capitol Representatives

For the second time in as many years, the Greenway Foundation has partnered with the City and County of Denver's Parks and Recreation Dept. to apply for a Great Outdoors Colorado (GOCO) grant, in this case a planning grant submitted in March, 2009.

The purpose of the grant is to integrate the River North (RINO) and

River South (RISO) Greenway Master Plans into the Denver South Platte River Greenway Implementation Plan that will include the identification of 3-5 priority projects, their related conceptual designs along with recommendations for sources of funding to build the projects.

Tools for engaging the community in the development of the Implementation Plan include holding several public

meetings at sites along and near the River as well as publicizing the effort at the various Greenway Foundation special events throughout 2009, including Confluence Concerts, River Flicks and the South Platte River Sweep. The Greenway Foundation has been building a constituency for our River since 1974. The people who utilize this significant urban environmental and recreational amenity need and deserve to be a part of planning our River's next level of improvement and enhancement.

Integrated and collaborative teamwork is crucial in the creation of a successful grant application. Our thanks go out to the following individuals who worked with the Foundation and Capitol Representatives in the creation and submittal of this exciting grant application: Gordon Robertson, Devon Buckles and Susan Baird at Denver Parks and Recreation Department; Merle Grimes with Merle D. Grimes, LLC; and Wade Shelton of The Trust for Public Land.

If awarded the GOCO Planning Grant will allow our Denver's Greatest Natural Resource to become an even stronger amenity for our City and its citizens.

U.S. ARMY CORPS OF ENGINEERS UNDERTAKES NEW STUDY IN DENVER COUNTY

By Marge Price and David Howlett, Capitol Representatives

A project that the Greenway Foundation undertook in the late 1990s was the starting point for a U.S. Army Corps of Engineers (USACE) Adams County-Denver County Reconnaissance Study that has recently been initiated.

The Greenway Foundation served as the non-federal sponsor for a USACE project along the South Platte River named the "Colfax Reach Project" in 1999-2000. The project's area of focus was between Lakewood Gulch, just upstream of the Colfax Ave. viaduct, downstream to where I-25 crosses over the River, adjacent to what is now Invesco Field. At the same time a local coalition of public and private organizations, including the Greenway Foundation (Foundation), was supporting congressional appropriations for that project, they

supported reconnaissance studies to be conducted in Adams and Arapahoe counties. Both of those studies were completed in the mid-2000s. Adams County's study led to a finding of federal interest and further federal funding allocated for the next step – a feasibility study for specific projects. However, for a number of reasons, the process never moved forward. The Foundation and its support team made several visits to Adams County jurisdictions up and down the River – several with the USACE staff from the Omaha District – to try to obtain engagement on a project, with the reality that the "funding window" for using the federal funds allocated for the project was in danger of closing.

Concurrently, the Foundation and its support team began working with Denver's Parks and Recreation Dept. on the River North (RINO) Greenway Master Plan and soon realized that within the Denver portion of the River and at the north boundary of Denver with Adams County, there were a number of possible projects that could qualify for a USACE study. They requested that the Omaha District Office of USACE and the Board of Commissioners in Adams County support the expansion of the study area to include Denver County. This longstanding and collaborative relationship between the Foundation and USACE resulted in a \$120,000 commitment from the Corps to Denver County to fund the new Reconnaissance Study with a 100% federal funding commitment.

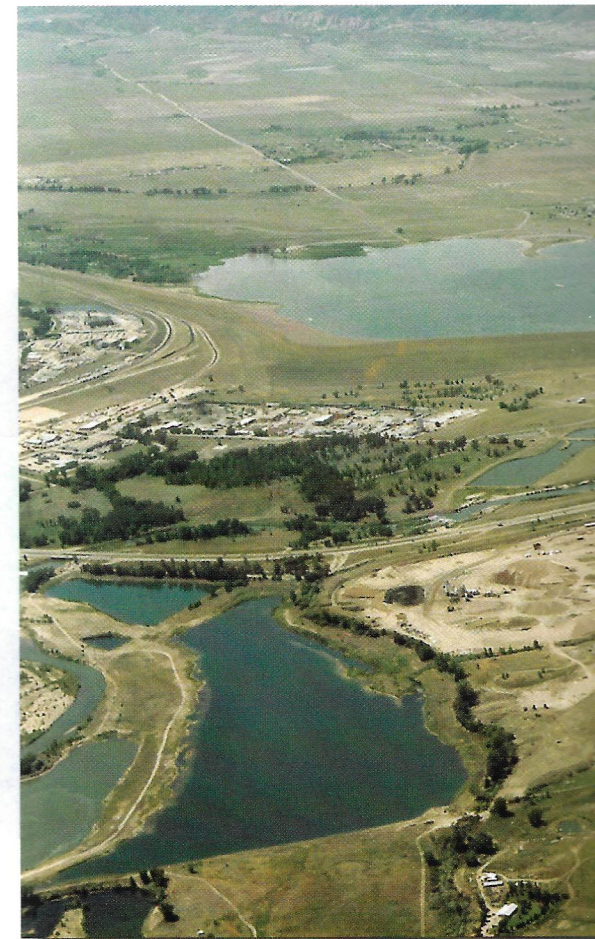
Capitol Representatives worked with Congresswoman DeGette on an amendment to the Adams County study. The House Transportation and Infrastructure Committee approved a

study resolution to expand the Adams County study to include Denver County on September 23, 2008. This engaged and partnered effort has allowed the USACE Omaha District to begin work on a Reconnaissance Study of the South Platte River within the Denver County portion of the Study Area in December of 2008.

Capitol Representatives worked with USACE Omaha District to hold a kick-off meeting regarding the Denver County Reconnaissance Study on December 12, 2008. The Omaha District held a subsequent meeting with City representatives, regional agencies and non-profit organizations to identify issues and opportunities in the Denver County South Platte River Corridor in early 2009. USACE's Omaha District is continuing to work with the City and other local partners to collect essential data and identify issues and opportunities.

The USACE Omaha District Denver County Reconnaissance Study will be completed by the end of 2009. This is expected to coincide with the completion of the River South (RISO) Greenway Master Plan.

It is anticipated that the completed Reconnaissance Study will lead to an expanded Feasibility Study in Denver County. This, in turn, will open the door for construction funding that will provide additional improvements and enhancements to Denver's South Platte River through USACE's Continuing Authority Programs as well as additional federal authorization and related funding sources.



An aerial view of Chatfield Reservoir

CHATFIELD RESERVOIR REALLOCATION STUDY-PROGRESS CONTINUES

By David Howlett and Marge Price, Capitol Representatives

The Chatfield Reservoir Reallocation Study continues to make progress. The concept behind reallocation is to re-designate storage space that is currently reserved for flood control purposes to space for joint flood control and conservation purposes, effectively increasing capacity for multipurpose water.

The Greenway Foundation is one of the instream partners on the

Chatfield Reservoir Reallocation Study. The study is a collaborative effort between the Foundation, the City of Denver, and the U.S. Army Corps of Engineers. The study is currently in the planning phase, and the Foundation is working with the Corps to identify potential reallocation projects. The study is expected to be completed by the end of 2009. The Foundation is also working with the City to develop a plan for the reallocation of storage space. The plan is expected to be completed by the end of 2010. The Foundation is also working with the City to develop a plan for the reallocation of storage space. The plan is expected to be completed by the end of 2010. The Foundation is also working with the City to develop a plan for the reallocation of storage space. The plan is expected to be completed by the end of 2010.

udies to
apahoe
s were
Adams
ling of
federal
step –
projects.
asons,
forward.
t team
County
e River
ff from
obtain
with the
ow” for
ted for
osing.

and its
g with
n Dept.
eenway
ed that
e River
Denver
were a
s that
study.
Omaha
nd the
Adams
of the
County.
orative
ndation
20,000
rps to
e new
100%
ed with
on an
County
ion and
roved a

study resolution to expand the Adams County study to include Denver County on September 23, 2008. This engaged and partnered effort has allowed the USACE Omaha District to begin work on a Reconnaissance Study of the South Platte River within the Denver County portion of the Study Area in December of 2008.

Capitol Representatives worked with USACE Omaha District to hold a kick-off meeting regarding the Denver County Reconnaissance Study on December 12, 2008. The Omaha District held a subsequent meeting with City representatives, regional agencies and non-profit organizations to identify issues and opportunities in the Denver County South Platte River Corridor in early 2009. USACE's Omaha District is continuing to work with the City and other local partners to collect essential data and identify issues and opportunities.

The USACE Omaha District Denver County Reconnaissance Study will be completed by the end of 2009. This is expected to coincide with the completion of the River South (RISO) Greenway Master Plan.

It is anticipated that the completed Reconnaissance Study will lead to an expanded Feasibility Study in Denver County. This, in turn, will open the door for construction funding that will provide additional improvements and enhancements to Denver's South Plate River through USACE's Continuing Authority Programs as well as additional federal authorization and related funding sources.



Photo courtesy of U.S. Army Corps of Engineers, 1999

An aerial view of Chatfield Reservoir, located in northern Douglas County

CHATFIELD RESERVOIR REALLOCATION STUDY- PROGRESS CONTINUES

By David Howlett and Marge Price,
Capitol Representatives

The Chatfield Reservoir Reallocation Study continues to make progress. The concept behind reallocation is to re-designate storage space that is currently reserved for flood control purposes to space for joint flood control and conservation purposes, effectively increasing capacity for multipurpose water.

The Greenway Foundation is one of the instream partners on the

Chatfield Reservoir Reallocation Study Coordinating Committee. The Committee has worked with the Colorado congressional delegation and the U.S. Army Corps of Engineers to secure \$191,000 in FY2009 for the Feasibility Report/Environmental Impact Statement (FR/EIS). The committee has worked with the non-federal local sponsor, the Colorado Water Conservation Board (CWCB), to identify a \$310,000 FY2010 appropriations request for the FR/EIS and related issues. This request has been submitted to the congressional delegation. Federal funding in the amount of \$269,000 for the draft FR/EIS was secured in FY2008.

The draft FR/EIS is expected to be ready for public review by the U.S. Army Corps of Engineers in the summer of 2009. The public will play an important role during a comment period following the release by providing feedback on the draft at public meetings and in writing. The FR/EIS will evaluate each alternative's potential impact on and potential mitigation for:

- Recreational Facilities and Activities
- Wildlife and Fisheries
- Vegetation
- Aquatic, Wetland and Land Habitat

- Rare, Threatened and Endangered Species
- Water Supply Resources
- Water & Air Quality
- Cultural & Socioeconomics Resources
- Flood Control

The draft FR/EIS being prepared by the Corps will evaluate the potential impacts and costs of four alternatives: two options for reallocation and two alternatives for water users if no action is taken at Chatfield. The Corps will release draft and final versions of the FR/EIS for review before issuing a Record of Decision (ROD) on any action. The proposed alternatives include:

- **No Action: New Storage Construction:** Without reallocation, water providers could consider using gravel pit storage and constructing a reservoir in the area.
- **No Action: NTGW/Gravel Pits:** Without reallocation, water providers could continue reliance on non-tributary groundwater (NTGW) and gravel pit storage.
- **Reallocation for 20,600 AF storage:** Raises top elevation of the existing conservation pool by 12 feet to 5,444 feet above mean sea level (feet m.s.l.). This is the maximum storage volume available for reallocation without negatively affecting the reservoir's flood control function. Fifteen water users would share the new joint flood control-conservation storage space, their use of which could cause fluctuations in lake levels.
- **Reallocation for 7,700 AF storage:** Raises top elevation of the conservation pool by 5 feet to 5,437 feet m.s.l. Fifteen water users would share the new joint flood control-conservation storage space, their use of which could cause fluctuations in lake levels.

The Chatfield Reservoir Coordinating Committee also worked with the Colorado congressional delegation, the Corps and CWCB to secure help on two critical issues. The first is reducing the cost of storage. The committee worked with the Corps and CWCB. A recommendation was made by the Corps to Assistant Secretary of the Army for Civil Works John Paul Woodley requesting a policy exception to reduce the cost of water storage from \$34 million to \$14 million. ASA Woodley approved the policy exception. This will result in a \$20 million savings for the Chatfield water users. The committee also secured language in the FY2009 Energy and Water Development Appropriations bill addressing cost of storage that requested the Corps look into this. This language was passed by Congress as part of the FY2009 Omnibus Appropriations bill. Although this language was restricted to Chatfield Reservoir, the ASA stated in his approval of the exception that he would recommend the Corps use this Chatfield example when crafting other reallocation agreements. It could become a national model.

The second issue undertaken by the committee was to secure legislative language in the FY2009 Energy and Water Development Appropriations bill that allows CWCB as the non-federal local sponsor to undertake environmental mitigation and recreational modification activities required at Chatfield Reservoir, with Corps oversight. This language was also passed by Congress as part of the FY2009 Omnibus Appropriations bill.

The Chatfield Reservoir Coordinating Committee extends its gratitude to the entire Colorado congressional delegation for its support of the FR/EIS and specifically thanks Sen. Wayne Allard, Sen. Ken Salazar, Rep. Diana DeGette and Rep. Ed Perlmutter for their leadership and help in securing the aforementioned language in legislation.

For the development of the policy exception recommendation, special thanks go to Steve Cone of the Corps' Institute for Water Resources. In addition, the committee thanks the Colorado Water Conservation Board, the hard work of the water users – especially Rick McLoud of Centennial Water and Sanitation District – and the Corps of Engineers staff at the local, district, division and headquarters levels.

There are some important steps ahead in the Chatfield Reallocation effort, but the goal shared by the instream cooperators – the Greenway Foundation, Metro Wastewater, Denver Water, City and County of Denver and City of Littleton – remain at the forefront of our efforts. Adding water storage at Chatfield promises to make it possible to release more water into the South Platte River for downstream use. It will also make it possible to work with those downstream users to time water releases in an environmentally sensitive way. That means reducing or even eliminating winter dry spots in the riverbed and improving wildlife and riparian habitat as well as improving the river as an amenity for all.

GR

The Greenway Preservation Trust is a p
Platte River, implement recreational and
employment programs, and sponsor fre

Your help is crucial in establishing this c
tributaries. Help us preserve and enhan
programs and events that help accom

Yes! I want to help su

- ☐ \$50 Friend of the R
- ☐ \$75 Family
- ☐ \$100 Sustainer
- ☐ \$250 Benefactor
- ☐ I would like to make a ple
- ☐ My pledge will be pa
- ☐ Please contact me about h
- ☐ Trust in my estate planning
- ☐ Check here if your employ

Please make your check payable to:
The Greenway Foundation
5299 DTC Blvd., Suite 710
Greenwood Village, CO 80111

Your contribution is fully Tax-Deductible
through Colorado's Enterprise Zone Pro

Name _____

Address _____

Phone # _____

GREENWAY PRESERVATION TRUST

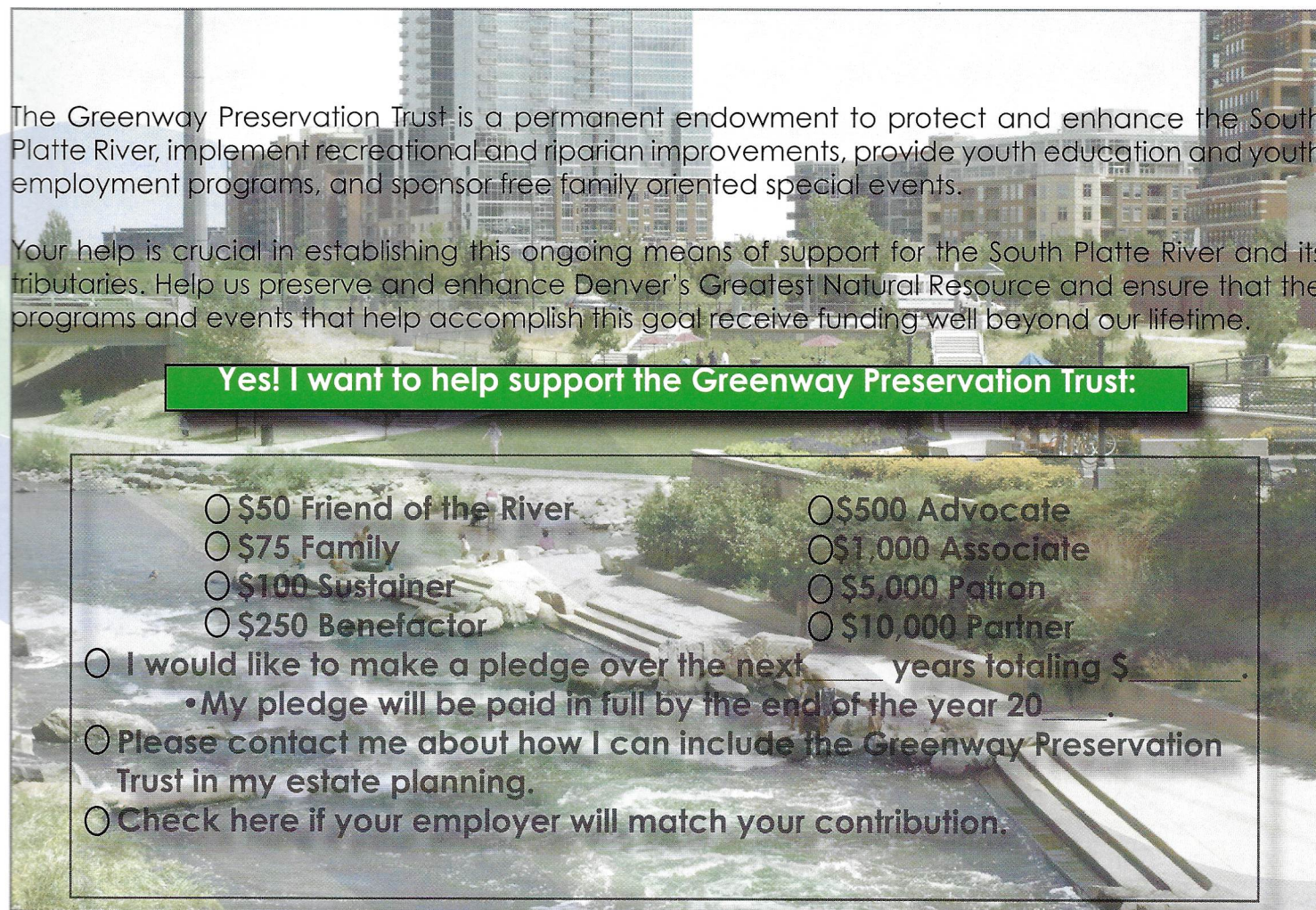
HOW CAN I HELP?

inating
h the
gation,
e help
first is
The
Corps
adation
sistant
Works
ing a
cost of
to \$14
ed the
ult in a
atfield
e also
Y2009
pment
g cost
Corps
e was
of the
ns bill.
stricted
stated
on that
ps use
rafting
s. It
.
by the
islative
gy and
iations
e non-
dertake
and
activities
r, with
ge was
t of the
s bill.

The Chatfield Reservoir Coordinating Committee extends its gratitude to the entire Colorado congressional delegation for its support of the FR/ EIS and specifically thanks Sen. Wayne Allard, Sen. Ken Salazar, Rep. Diana DeGette and Rep. Ed Perlmutter for their leadership and help in securing the aforementioned language in legislation.

For the development of the policy exception recommendation, special thanks go to Steve Cone of the Corps' Institute for Water Resources. In addition, the committee thanks the Colorado Water Conservation Board, the hard work of the water users – especially Rick McCloud of Centennial Water and Sanitation District – and the Corps of Engineers staff at the local, district, division and headquarters levels.

There are some important steps ahead in the Chatfield Reallocation effort, but the goal shared by the instream cooperators – the Greenway Foundation, Metro Wastewater, Denver Water, City and County of Denver and City of Littleton – remain at the forefront of our efforts. Adding water storage at Chatfield promises to make it possible to release more water into the South Platte River for downstream use. It will also make it possible to work with those downstream users to time water releases in an environmentally sensitive way. That means reducing or even eliminating winter dry spots in the riverbed and improving wildlife and riparian habitat as well as improving the river as an amenity for all.



The Greenway Preservation Trust is a permanent endowment to protect and enhance the South Platte River, implement recreational and riparian improvements, provide youth education and youth employment programs, and sponsor free family oriented special events.

Your help is crucial in establishing this ongoing means of support for the South Platte River and its tributaries. Help us preserve and enhance Denver's Greatest Natural Resource and ensure that the programs and events that help accomplish this goal receive funding well beyond our lifetime.

Yes! I want to help support the Greenway Preservation Trust:

<input type="radio"/> \$50 Friend of the River	<input type="radio"/> \$500 Advocate
<input type="radio"/> \$75 Family	<input type="radio"/> \$1,000 Associate
<input type="radio"/> \$100 Sustainer	<input type="radio"/> \$5,000 Patron
<input type="radio"/> \$250 Benefactor	<input type="radio"/> \$10,000 Partner

☐ I would like to make a pledge over the next _____ years totaling \$ _____.

• My pledge will be paid in full by the end of the year 20 _____.

☐ Please contact me about how I can include the Greenway Preservation Trust in my estate planning.

☐ Check here if your employer will match your contribution.

Please make your check payable to:
The Greenway Foundation
5299 DTC Blvd., Suite 710
Greenwood Village, CO 80111

Your contribution is fully Tax-Deductible. For \$250 or more, receive a 25% additional tax incentive through Colorado's Enterprise Zone Program.

Name _____

Address _____

Phone # _____ Email _____



The Greenway Foundation

5299 DTC Blvd, Suite 710
Greenwood Village, CO 80111
303-455-7109 Fax 303-455-7234
www.greenwayfoundation.org



BOARD OF DIRECTORS

Chairman/Treasurer

Joe Shoemaker

Vice Chairman

Kip Stastny

Jon Bridges
Bar Chadwick
Larry Elrod
John Moran
Cynthia Nagel
Gary Roffe
Paula Sandoval
Peter Van Arsdale

Executive Director

Jeff Shoemaker

Special Events Coordinator

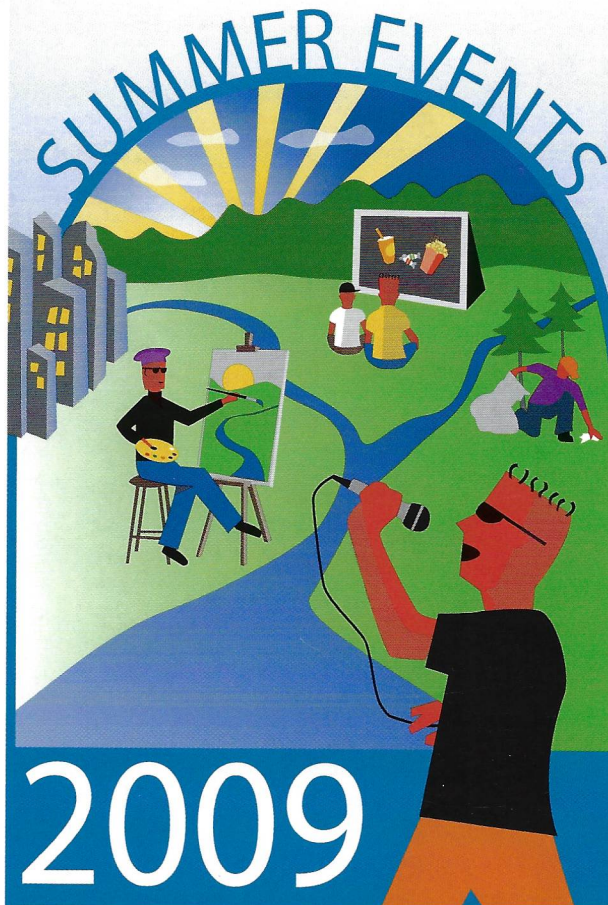
Cindy Shoemaker

SPREE Program Director

Jolon Clark

Venice on the Creek Manager

Jonathon Clark



A benefit for...



THE GREENWAY FOUNDATION
Planning, Building, Maintaining and Enhancing Greenways, Parks, Trails and Waterways
Since 1974

Calendar of Events

Mile High Mile • Sunday, May 31st

Denver's Premier One Mile Race held at the State Capitol. For more information about the race and to register, please visit us online at www.milehighmile.com

Venice on the Creek • Opens June 4th

- Hours of Operation:
Thursday-Sunday 5:00 p.m.- 10 p.m.
Candlelight Rides start at 8:30 p.m.
- Group Rides available Wednesday only.
- Please call 303-893-0750 or visit us online at www.veniceonthecreek.com for more information or to make a reservation.

Confluence Concerts • At Confluence Park

- All concerts begin at 6:30 p.m. and conclude at 8:00 p.m.
- July 2.....Shuffletones
- July 9.....Eric Trujillo and the Mambotets
- July 16.....Donna Angele
and the Zydeco Posse
- July 23.....Dotsero

River Flicks • At Confluence Park

- All movies begin at sunset
- August 6.....Transformer
- August 13.....The Iron Giant
- August 20.....The Italian Job
- August 27.....Young Frankenstein

Venice on the Creek • Closes August 30th

South Platte Riversweep

Saturday, September 26th

- 8:00 a.m.- 12:00 p.m.
- Fishback Landing Park-Adjacent to the Downtown Aquarium.

Art on the River

Saturday, September 14th-29th

For more information, please visit the Art Students League of Denver's website at www.asld.org