

THE GREENWAY CURRENT

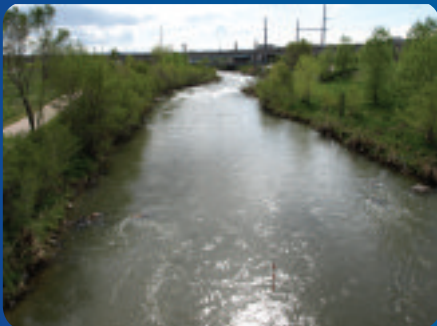
THE GREENWAY FOUNDATION ANNUAL REPORT

2013



WWW.GREENWAYFOUNDATION.ORG

CONTENTS



OUR MISSION

The Mission of the Greenway Foundation is to advance the South Platte River and the surrounding tributaries as a unique environmental, recreational, cultural, scientific, and historical amenity that uniquely links our City's past and its future.

This mission will be accomplished by creating ongoing environmental, recreational, and riparian enhancements; holding property, when needed, in conservation easements; utilizing the River as an outdoor and historical learning resource; hosting free cultural events promoting the relationship between the River and music, art and theatre; providing youth employment opportunities; and by promoting good stewardship through hands-on educational programs.



HISTORY AND ENHANCEMENTS: PAGES 2 - 5

ENVIRONMENTAL EDUCATION: PAGES 6 - 7

FRIENDS OF THE SOUTH PLATTE: 8 - 9

YOUTH EMPLOYMENT: 10 - 11

RIVERSIDE EVENTS: 12 - 15

SPONSORS AND STAFF: PAGES 16 - 17

Thank you to Tom Rice Photography, DHM Design, THK Associates, and Scott Murphy Images for their contributions to the photography and artwork in this publication.



Jeff Shoemaker
Executive Director
The Greenway Foundation

Greetings!!

It was nearly a half century ago when the greatest natural disaster in the history of Denver occurred. On June 16, 1965, after days and days of unrelenting rain, the flooding of the South Platte River in the Metro Denver area resulted in unprecedented damage to the River and the surrounding area with stream flows as intense as 150,000 cfs (cubic feet per second). Lives were lost, as were countless homes and industrial businesses adjacent to the River, along with dozens of the bridges crossing over the South Platte. Within 9 years of this devastation, three significant responses to the flood had taken place.

- The creation of the Urban Drainage and Flood Control District – 1969
- The creation of Chatfield Reservoir and Chatfield State Park – 1973
- The creation of The Greenway Foundation - 1974

This past autumn, the heavy rains and subsequent flooding of rivers and creeks throughout Colorado are reminders that despite the ongoing efforts over the last four decades to preserve, protect and enhance Colorado's waterways, much work remains.

As The Greenway Foundation (TGF) approaches its 40th anniversary this coming June, the Board of Directors and Staff at TGF are more determined than ever to continue to engage with our public, private, philanthropic and political partners to maximize both the ecosystem restoration and flood safety of the South Platte River and its tributaries.

Since its inception in 1974, TGF is both proud and grateful to be part of a collective effort to have created (to date) over \$100 Million of environmental and recreational improvements up and down the South Platte River Watershed in the Denver Metro area. The return of investment related to this significant commitment of numerous funding sources is the realization of over \$10 Billion of residential, retail, commercial, and entertainment development adjacent to these waterways.

Equally exciting, Denver will witness over \$20 Million of new enhancements to the South Platte's parks, trails, and channel over the next 18 months. This exciting reality is a direct outcome of an intensive and far reaching planning effort over the last six years, resulting in the River Vision Implementation Plan. These collective efforts are a key factor in Mayor Michael B. Hancock's recently released Smart Jobs Report stating that one of Denver's greatest opportunities to create new and sustainable jobs is along the South Platte River corridor.

And, we're just getting started!

Please enjoy this newest edition of our annual report – The Greenway Current. Learn more about the multi-faceted planning, design, and construction efforts to continue the reclamation of Denver's greatest natural resource. Learn more about TGF's award-winning youth education program – SPREE (South Platte River Environmental Education). Learn more about TGF's continued efforts to engage our city and its citizens with their waterways through events such as South Platte RiverSweep, South Platte RiverFest, Art on the River, Panning on the Platte and more.

And then, I encourage you to make a commitment to become a Friend of the South Platte with a financial pledge that is right for you. TGF is more determined than ever to Return our River to its People.

Your support will allow us to make this goal a reality!

Jeff Shoemaker
Executive Director
The Greenway Foundation

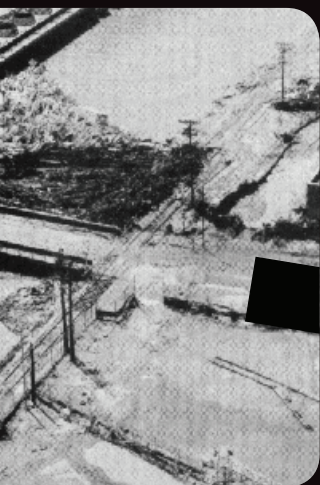
CELEBRATING 40 YEARS OF THE GREENWAY FOUNDATION

IN 1974 THE GREENWAY FOUNDATION WAS CREATED TO RESTORE, RECLAIM, AND REVITALIZE

250 Sources of
Pollution

TO BUILD OVER 100 MILES OF INTERCONNECTED GREENWAY TRAILS, OVER 100 ACRES OF RIVER

THESE IMPROVEMENTS HAVE SPURRED OVER \$10 BILLION OF ECON



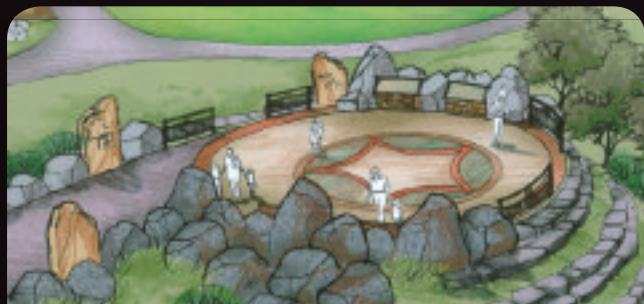
THE SOUTH PLATTE RIVER. OVER THE PAST 40 YEARS, TGF HAS SPEARHEADED EFFORTS



ASIDE PARKS, AND OVER 100,000 LINEAR FEET OF WATER QUALITY IMPROVEMENTS.



ECONOMIC BENEFIT FOR DENVER. AND WE'RE JUST GETTING STARTED.



WWW.GREENWAYFOUNDATION.ORG



ENHANCEMENTS

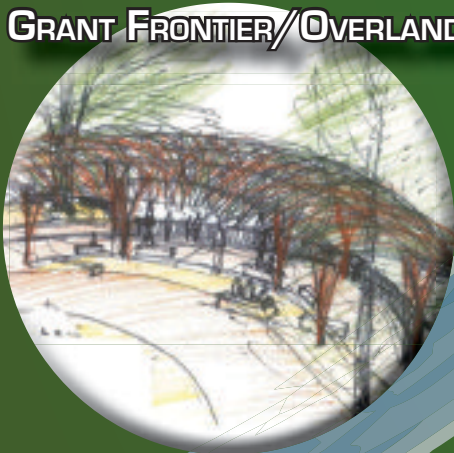
A RIVER RE-ENVISIONED

As TGF approaches its 40th anniversary, we continue to engage with numerous partners – public, private, philanthropic and political - to craft the vision, design, and funding opportunities to create new and exciting recreational and environmental improvements along the South Platte River and its tributaries as well as programmatic endeavors that maximize the value of our River to our community and its citizens. These endeavors continue to engage the mission of TGF to Return our River to its People.

CHERRY CREEK PEDESTRIAN BRIDGE



GRANT FRONTIER/OVERLAND CORRIDOR



SUN VALLEY CORRIDOR



JOHNSON-HABITAT/VANDERBILT CORRIDOR



2011 - \$0 FOR RIVER ENHANCEMENTS
2013 - \$20 MILLION COMMITTED TO RIVER ENHANCEMENTS



**DOWNTOWN CHILDREN'S
PLAYGROUND**



MULTI-USE TRAIL ENHANCEMENTS



CONFLUENCE PARK MASTER PLAN

P.U.R.E

PROTECT OUR URBAN RIVER ENVIRONMENT

TGF has established a goal for a trash free South Platte River. The efforts of PURE to accomplish this goal include:

- Initiation of research on public attitude and behavior toward trash as it negatively effects Metro Denver's urban waterways
- Creation of an Information and Education Plan that focuses on the immediate reduction and ultimate elimination of trash along the South Platte River and its tributaries
- Identification of programs and projects that will increase the public's awareness that "Trash in my Neighborhood = Trash in my River"
- Initiation of discussions that lead to long-term marketing and behavior change efforts resulting in a trash free South Platte River

CHATFIELD REALLOCATION PROJECT

TGF continues to work with numerous partners involved with the Chatfield Reallocation Project to ensure that the recreational and environmental mitigation efforts for Chatfield State Park are properly addressed as part of the effort to increase storage at Chatfield Reservoir.

Longstanding goals include:

- Scheduled water releases from Chatfield Reservoir that allow for better boating and fishing opportunities.
- A more consistent and predictable stream flow for the South Platte River below the Reservoir that provides recreational, environmental and water quality benefits to the River.
- Ensure that recreational, environmental, and water quality benefits for the South Platte River are included within the goals for all future water projects

SPREE

ENVIRONMENTAL EDUCATION

"THANK YOU FOR HELPING US GO TO SPREE. MY FAVORITE PART WAS WHEN I GOT TO SEE THE RIVER!"

-PANDORA

TGF has provided hands-on environmental education to over 70,000 schoolchildren through our South Platte River Environmental Education (SPREE) program.

SPREE's mission is to inspire meaningful personal connections with nature in order to foster a lifelong sense of pride in, belonging to, and stewardship for our natural world by connecting the children of Denver to the South Platte River through engaging educational experiences.



THIS YEAR

Through our award winning field trips, summer camps, and holiday camps, SPREE:

Engaged

nearly 3,200 students in excursions along the South Platte River

Provided

90 excursions for students in ECE – 5th grade

Added

an additional 40 excursion days to its calendar to expand its capacity to serve Denver's youth

Sold Out

105 days of Summer Camp at two separate locations

Enrolled

620 total campers

Hosted

11 school holiday camps and the first ever Spring Break Camp

Provided

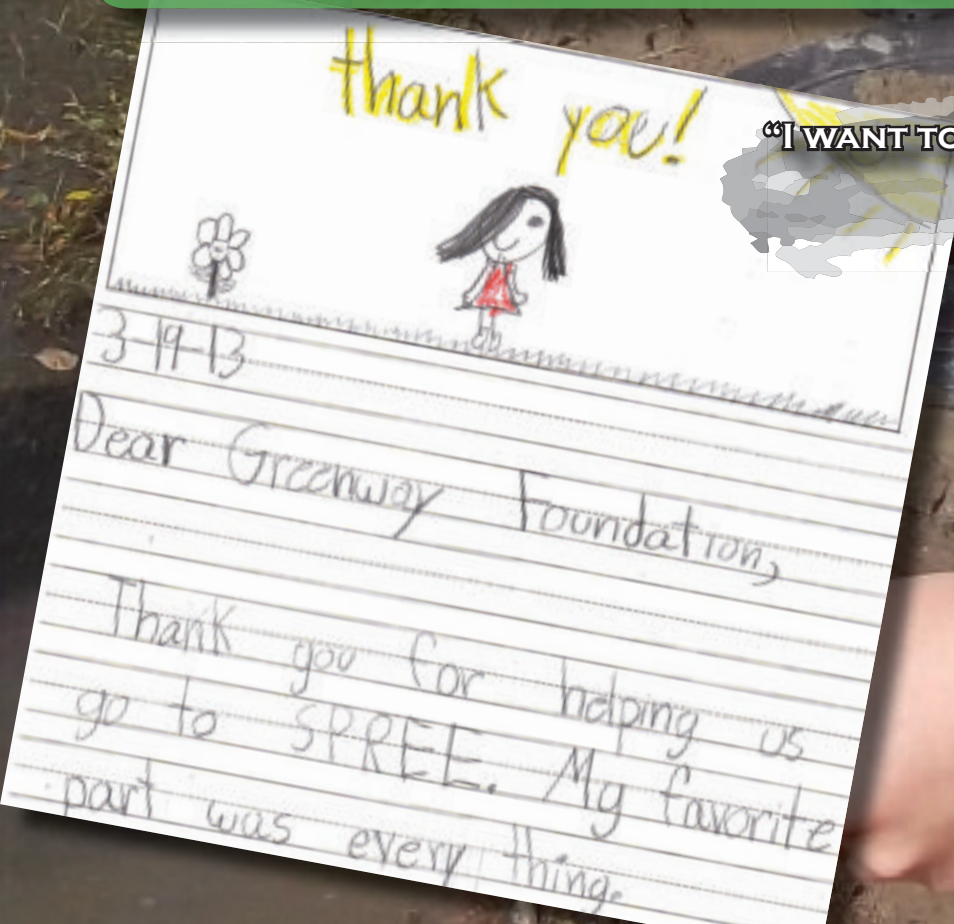
employment for 12 educators and seven youth River Rangers

Camped

overnight at Johnson-Habitat Park for the first ever urban campout on the South Platte

"I WANT TO DO WHAT YOU DO WHEN I GROW UP."

-ARIEL



FRIENDS OF THE SOUTH PLATTE

YOU CAN MAKE A DIFFERENCE

Impossible? Exactly what Joe Shoemaker, the Founder of the Greenway Foundation, heard from everyone when he set out to reclaim the South Platte River from the neglected and polluted eyesore that it was in 1974. Naysayer after naysayer stated - "Take a river that is ecologically dead, with over 250 sources of direct dumping and pollution and turn it into a vibrant green oasis in the heart of a major metropolitan area? - Impossible!!" Joe turned a deaf ear to the naysayers and look at the River today! 100 miles of interconnected urban trails. 100 acres of public parks and open space. 100,000 linear feet of water quality improvement and \$10 billion in estimated economic benefit for Denver in less than 40 years.

Saving a river takes hard work, dedication, and grit. It takes an army of individuals, businesses, public entities, and nonprofits. It takes partnership, pain, struggle, and perseverance. It takes a city.

As The Greenway Foundation sits on the verge of turning 40, we are often asked, "When will you be done?" The immediate and obvious answer is "Done? - We're just getting started!!" But we can't do it alone. We need friends, and lots of them.

Join us in the continuing effort to preserve and protect Denver's greatest natural resource by becoming a **Friend of the South Platte**.

The South Platte River is YOUR river, and its future depends on you. Imagine what YOUR River can be in five years, or ten, or twenty with an army of Friends of the South Platte!

**IF WE DID ALL THIS
IN 40 YEARS,
IMAGINE WHAT
WE CAN DO
WITH 40 MORE.**



If 40 people commit to giving \$40 each month, we could raise almost \$20,000 in the next year to support improvements for the South Platte and its tributaries as well as youth education, youth employment, and community engagement programs.

If 400 people made that commitment, **Friends of the South Platte** could provide close to \$200,000 of support for the River each and every year. That's right, \$200,000!

Thank you for considering becoming a **Friend of the South Platte**!

BECOME A FRIEND OF THE SOUTH PLATTE

**“IF IT TAKES A VILLAGE TO RAISE
A CHILD, THEN IT TAKES A CITY TO
RECLAIM A RIVER”**

**JOLON CLARK
ASSOCIATE DIRECTOR
THE GREENWAY FOUNDATION**

Be a part of the beginning of the next 40
years. Become a friend of the South Platte at
www.greenwayfoundation.org

WAYS TO GIVE

GIVE ONLINE

Giving online is fast, easy, and secure. Gifts of any amount may be made and an e-mail confirmation is provided. Both one-time and recurring monthly gifts can be made online.

www.greenwayfoundation.org

USE THE ATTACHED ENVELOPE

A simple check or credit card charge is quick and straightforward.

CORPORATE SPONSORSHIPS

Businesses play a vital philanthropic role in TGF's work. We welcome corporate relationships and offer sponsorship of TGF's programs, projects, and events.

PLANNED GIVING

There are many ways to make a planned gift that benefit TGF. Please contact us for a simple bequest form, or for information on other types of planned gifts.

FOR FURTHER INFORMATION

For more information about how you can support TGF and its mission, please contact:

Jolon Clark
Associate Director
jolon@greenwayfoundation.org

RIVER RANGERS

YOUTH EMPLOYMENT

"I THINK THIS PROGRAM WILL HELP ME IN THE FUTURE BECAUSE I HAVE A BIGGER, BROADER UNDERSTANDING OF THE ENVIRONMENTAL FIELD. THIS WILL HELP ME CHOOSE MY CAREER PATH AND WHAT COLLEGE I WANT TO ATTEND."

-RIVER RANGER CRISTIAN



THIS YEAR

Through a variety of experiences in education, conservation work, and professional development, the Greenway River Rangers:

Taught

over 300 hours of environmental programs

Participated

in workshops focused around foundations of environmental education and basic job skills

Gained

a broader understanding of the environmental field and career opportunities

Completed

18 hours of riparian restoration

Conducted

trash inventories along the River corridor that contributed to The Greenway Foundation's PURE campaign

Planned

prepared and taught original lesson plans at summer camp individually and as part of a team

"MY FAVORITE THING ABOUT SPREE IS HOW THEY MANAGED TO CHANGE THE WAY WE LOOK AT EDUCATION. I USED TO THINK EDUCATION WAS JUST TALKING AT THE KIDS, AND NOW I SEE HOW INTERACTIVE EDUCATION CAN BE"

-RIVER RANGER JORGE

RIVERSIDE EVENTS

TGF hosts a number of events along our urban waterways that aim to engage, educate, and endear Denver's citizens to the South Platte River. These events highlight the cultural, educational, and recreational potential of the South Platte and its tributaries as they flow through the heart of our city. We also host a number of dynamic friend-raisers and fundraisers that help raise the funds necessary to continue our vital work along the South Platte.

CH2MHILL RIVERSWEEPS

- Over 800 Youth and Adult Volunteers
- Nearly 3,000 work hours donated to Denver Parks + Recreation
- Projects completed in over 10 parks along the South Platte River
- 5 trailer loads of mulch placed in public spaces
- 12 yards of crusher fines trail installed
- 3 dumpsters of plant debris removed
- 40 cubic yards + 30 bags of trash removed

EDUCATIONAL EVENTS



FISHING AND WATER
FESTIVAL

12



PANNING ON THE
PLATTE



ART ON THE RIVER

COORS LIGHT SOUTH PLATTE RIVERFEST PRESENTED BY REI



- Over 10,000 participants
- 19 Hours of live music
- 1st ever pro stand-up paddleboard race at Confluence Park, the birthplace of Denver
- 1,500 participants engaged in Paddle Boarding



Publication Printers corp.

Quality Web Printing



WWW.GREENWAYFOUNDATION.ORG

GALA ON THE BRIDGE



**2013 Friend of the River Award
Winner Christopher N. Shears**

Held directly over the South Platte River, Gala on the Bridge hosts cocktails, music, and dinner at the historic 19th Street pedestrian bridge on Platte Street near Commons Park. The Gala offers a view of the River and downtown with an Icon Award winning menu set to the sounds of the River flowing beneath. Gala on the Bridge is TGF's signature fundraiser.

HONORARY CHAIRS

Mayor Michael B. Hancock
First Lady Mary Louise Lee
Governor John Hickenlooper
First Lady Helen Thorpe
Senator Mark Udall
Maggie Fox
Senator Michael Bennet
Susan Daggett
Congresswoman Diana DeGette
Lino Lipinsky

EVENT CHAIR

Bar Chadwick

EVENT COMMITTEE

| | |
|----------------|---------------------|
| David Cole | Mike LaMair |
| Barb Gibson | Holly Brown Nichols |
| Paula Grey | Andy Rockmore |
| Rob Grey | John Shaw |
| Laurie Helmick | Roger Sherman |
| Jeff Hermanson | Jim Theye |
| Terry Hershey | Dave Thorpe |
| Fabby Hillyard | Ellen Winkler |
| Steve Katich | Jason Winkler |



SA+R
SHEARS ADKINS ROCKMORE

Kentwood
CITY PROPERTIES

BALFOUR
AT RIVERFRONT PARK

1-TBANK

LODO
DISTRICT
OLD. NEW. NOW.

SHAW
CONSTRUCTION
NICHOLS PARTNERSHIP

PMRG | PM Realty Group

THE SHOEMAKER FAMILY

Forest City Stapleton
Grand American Inc.
JE Dunn
Kiewit
Luxe Salon
The Opus Group
Industry
Colorado Business Bank
Holland Partners
NAI Shames Makovsky
The Architerra Group
Brownstein Hyatt Farber
Schreck, LLP
Continuum

CRL Associates
K2
King Soopers
Larimer Associates
LC Fulenwider
McWhinney
Merrick & Company
Monroe & Newell Engineers
Mortenson Construction
Snell & Wilmer, L.L.P.
Koelbel
Oz
Wink inc
Lynd Conscious Real Estate

AFTER PARTY ON THE BRIDGE

After Party on the Bridge takes place on the historic 19th street bridge one night after Gala on the Bridge. At the After Party, TGF presents the Partners in Change Awards in four categories to individuals, organizations, and corporations who have helped in TGF's 40 year endeavor to reclaim the South Platte River. This year's event also included live music, a dance flash mob, and a menu inspired by street vendors across the world.

PARTNERS IN CHANGE AWARD WINNERS 2013

ART

Rik Sargent
for One World, One Water

PUBLIC PROJECTS

Xcel Energy

PRIVATE DEVELOPMENT

TAXI & GroundWorks
for Fr8scape

Programming Events, & Recreation

cityWILD

EVENT CO-CHAIRS

Anna Bogler and Jorgen Jensen

HOST COMMITTEE

| | |
|-----------------|------------------|
| Scott Aller | Lisa Jorgensen |
| Brent Applebaum | Bridgette Moller |
| Holly Barrett | Daniel Nichols |
| Dan Cohen | Kael Robinson |
| Casey Grosscope | |



CONSTRUCTION LEADERS



WWW.GREENWAYFOUNDATION.ORG

STAFF



Jeff Shoemaker - Executive Director
jeff@gnwy.org
(303) 818-8078



Jolon Clark - Associate Director
jolon@gnwy.org
(303) 743-9720 ext 820



Mary Palumbo - Youth Development Director
mary@gnwy.org
(303) 743-9720 ext 840



Autumn Bjugstad - Camp Director
autumn@gnwy.org
(303) 743-9720 ext 830



Rachel Steel - Excursion and Development Coordinator
rachel@gnwy.org
(303) 743-9720 ext 920



Marilyn Mead - Educator and Event Team Leader
marilyn@gnwy.org
(303) 743-9720 ext 850



J.J. Clark - Editor in Chief and Designer of The Greenway Current
jj@gnwy.org

SUPPORTERS

The Greenway Foundation is grateful for the invaluable support from the following organizations

FINANCIAL SUPPORT

| | | | |
|--|-----------------------------------|--------------------------|--|
| Architerra Group | Colorado Water Conservation Board | JE Dunn | PM Realty Group |
| Ark Ecological | Comcast | Jefferson Foundation | Publication Printers |
| Balfour | Comcast Foundation | Kentwood City Properties | Quick Family Foundation |
| Brownstein, Hyatt, Farber, & Schreck | Continuum | Kiewit | REI |
| Capitol Representatives | CRL Associates | King Soopers | Riverfront Park Community Foundation |
| Castle Pines North Metro District | D4 Urban | Larimer Associates | SA + R Shears, Adkins, & Rockmore |
| CDM Smith | Denver Trout Unlimited | LoDo District | SCFD |
| Centennial Water & Sanitation District | Earth Force | Luxe Salon | Shaw Construction |
| Central CO Water Conservancy District | El Pomar Foundation | McGeady Sisneros | SmithGroupJJR |
| CH2M HILL | Encana Foundation | McWhinney | Snell & Wilmer |
| City & County of Denver | ERO Resources | Merrick | South Metro Water Supply Authority |
| City of Glendale | Exdo Event Center | MillerCoors | Spokiz |
| CoBiz | FirstBank | Moniker Foundation | Sports Clips |
| Colorado Dept of Parks & Wildlife | First Unitarian Church | Monroe & Newell | St. Charles |
| Colorado Dept of Public Health & Environment | Forest City | Mortenson Construction | Teimeier & Stich |
| Colorado Native | Galvanize | Muller Engineering | Trout, Raley, Montañó, Witwer, & Freeman, P.C. |
| | Garney | NAI Shames Makovsky | Xcel Energy |
| | Gates Family Foundation | The Nature Conservancy | Xcel Energy Foundation |
| | GBSM | Nichols Partnership | |
| | Grand American | Opus | |
| | Holland Partners | Ozone Aware | |
| | | PCL Construction | |

IN-KIND SUPPORT

| | | |
|----------------------------------|------------------------------------|---|
| American Canoe Association (ACA) | HU | Starbucks |
| Boardworks SUP | Hubert's Lemonade | Territory Unlimited |
| Chipotle | Loki | The Confluence |
| Coca Cola | Ocean Conservancy | THK Associates |
| Community Coordinating District | Overland Pond Stewardship Partners | Tony P's |
| Confluence Kayaks | Platte Valley Trolley | Uber |
| Downtown Aquarium | Quarterly Karma | Urban Drainage and Flood Control District |
| Early Bird/Night Owl | Radio 1190 | Westword |
| Earth Force | Reddy Ice | Wonderbound |
| El Dorado | Retro Room | |
| Honest Tea | Sports Radio 1043 | |

PARTNERS

| | | |
|---|---------------------------------------|---|
| Arapahoe County Open Space | Environmental Learning for Kids | Platte Valley Trolley |
| Colorado Whitewater Association | Fairview Elementary | Polaris at Ebert |
| Denver Community Planning and Development | Gold Unlimited | Southmoor Elementary |
| Denver Environmental Health | Grant Ranch School | Steele Elementary |
| Denver Office of Economic Development | Great Outdoors Colorado | Teller Elementary |
| Denver Parks and Recreation | Groundwork Denver | The Nature Conservancy |
| Denver Public Works | KIPP Denver Collegiate Academy | Tri County Health |
| Denver Urban Renewal Authority | McKinley Thatcher Elementary | Trust for Public Land |
| Earth Force | Metro Wastewater Reclamation District | Urban Drainage and Flood Control District |
| | Palmer Elementary | |

THE GREENWAY FOUNDATION
1855 S. PEARL ST. SUITE 40
DENVER, CO 80210
WWW.GNWX.ORG

BOARD OF DIRECTORS

KIP STASTNY, Chairman
Property Management

BAR CHADWICK, Vice Chairman
City Planner/Project Coordinator
City and County of Denver

JOHN MORAN, Secretary
C.P.A.

BRENT APPLEBAUM
Teacher and Certified Athletic
Trainer

JON BRIDGES
Administrator, City of Englewood

LARRY ELROD
Quantum Corp

KATIE NAVIN
Executive Director
Colorado Alliance for
Environmental Education

LESLEY ROPER
Parks & Open Space Consultant

PAULA SANDOVAL
Business Owner

PETE WEST
Xcel Energy, Retired

JOE SHOEMAKER, Founder



The Official Printer of The Greenway Foundation

CALENDAR OF EVENTS FOR 2014

SPRING RIVERSWEEP

Saturday, April 26, 2013
Volunteer registration
opens February 3, 2014

Fall RiverSweep

Saturday, September 27, 2014
Volunteer registration
opens July 7, 2014

SOUTH PLATTE RIVERFEST

Saturday, June 28 and
Sunday, June 29

FISHING FOR KIDS

Fall 2014
Registration opens late Summer 2014

GALA ON THE BRIDGE

Thursday, September 11, 2014
Tickets on sale Summer 2014

PANNING ON THE PLATTE

Fall 2014
Registration opens late Summer 2014

AFTER PARTY ON THE BRIDGE

Friday, September 12, 2014
Tickets on sale Summer 2014

ART ON THE RIVER

Fall 2014
Registration opens late Summer 2014

WWW.GREENWAYFOUNDATION.ORG

Publication Printers corp.

Quality Web Printing