

CHAIRMAN
Joe Shoemaker

VICE CHAIRMAN
Bill DeGroot

Larry Ambrose
Bill Avery
Edna Doyle
Perry Eberhart
Carolyn Etter
Libby Kirkpatrick
Steve Metcalf
Amy Miller
Philip Milstein
Eldon O'Neal
Charles Roos
Shirley Schley

MAYOR OF DENVER
Federico Pena

EXECUTIVE DIRECTOR
Jeff Shoemaker

"A
river
is more than
a amenity
it is
a
treasure."
Justice Wm. O. Douglas



THE GREENWAY NEWS

Vol. 9 No. 1

Spring 1987

Boettcher Foundation Makes The Greenway Experience A Reality!

by Carl Crookham - Greenway Experience Coordinator

Thanks to a grant from the Boettcher Foundation, the Platte River Greenway is taking on an exciting new role as an educational corridor. This new venture has been christened "The Greenway Experience" and consists of a variety of indoor study concepts as well as outdoor tours and activities along several miles of the Greenway.

The Greenway Foundation's initial impetus has been to clean up the waters of the South Platte River and restore the beauty of its banks. The wonderful success of this effort is obvious to anyone who has strolled along the paths of the beautiful Greenway. As the River has undergone this rebirth, so has the heart of Denver. With the realization that, "the River is the city and the city is the River", the Greenway Foundation has entered into a new and very important phase of the project. The goal of the Greenway Experience is simple to state: "Bring the people back to the River", both physically and spiritually. In the spirit of the River lies the pride of the people, and it is the level of that pride that will determine the future of our city.

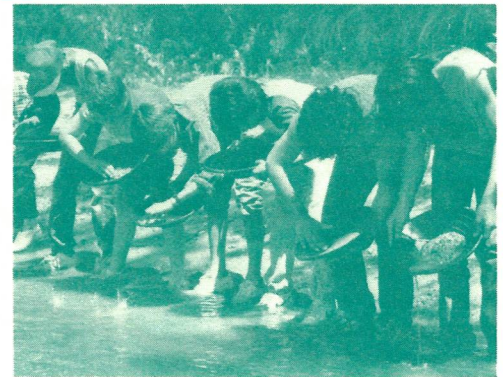
The pride and determination to build an exciting and prosperous future began for Denver in 1859. A group of cold, tired, dirty, and hungry gold seekers stood at the confluence of Cherry Creek and the South Platte River and said, "This will be our home". Not, "If things work out, or if luck is with us", but rather "This **will** be our home". In the recent past, not nearly enough emphasis has been placed on instilling and perpetuating this determination and pride. We have lost much of the concept of viewing the city as a family, become disjointed segments, each concerned with itself rather than

dedicated to the success of all. A frontier city with this mentality would not have lasted through the first winter. But now this pioneer spirit is being reborn. And where else should this rebirth take place but on the banks of the South Platte.

The Greenway Foundation and Denver Public Schools have jointly determined that the Greenway must become an educational corridor. The River needs to become a place to learn about the past, present, and future of Denver. As this occurs, a higher level of pride will develop within our citizens producing continued improvements and success along the Greenway.

The Greenway Experience features Denver Public School students as tour guides and activity directors. Tours are available to all segments of our community. The initial tour of the Greenway Experience, entitled "Let's Get Acquainted", is designed to incorporate usage of a special workbook to give a fast-paced, thought-provoking introduction to the exciting potential of the Greenway. Many schools have already registered for Spring tours, with the first tour having taken place on April 22, 1987. Although most of the school tour dates have been filled, there are still a number of openings for community groups. These tours are available afternoons and weekends.

It is truly exciting that the dedication of the Greenway Foundation and Denver Public Schools, together with financial support from the Boettcher Foundation have given Denver this innovative new educational opportunity. For more information on how you might participate in the Greenway Experience, contact the Greenway Foundation office.



1987 Great Relay Race—Continuing to Benefit “The Only River in Town!”

by Susan Mason-Race Director



On Sunday, June 21st, more than 1100 participants are anticipated at the Eighth Annual Great Relay Race along the Greenway. This annual fund-raiser for the Greenway Foundation is one of the longest running sporting events in Denver, consisting of individuals running, biking, skating, kayaking, canoeing, and walking their way in team relay fashion to the finish line at Confluence Park.

Last year we saw nearly 90 teams of seven to ten members each compete on five race courses: the South course, starting at Chatfield Reservoir; the North course, starting at Barr Lake; the Cherry Creek course, starting at Cherry Creek Reservoir; the Bear Creek course, with the start at the intersection of Bear Creek and Kipling; and the new addition to the Greenway trail system, the Clear Creek course, starting at the intersection of Clear Creek and Pecos Street.

In past years the Race has celebrated events such as “Ten Years on the Greenway”; “A Day on the Platte in June”, when the Race day was officially celebrated in Denver after a declaration by Gov. Richard Lamm; “Twenty Years After the Flood”, remembering the devastation of the 1965 flood; and

1986’s “The Many Faces of the Platte”, celebrating the many recreational opportunities of the River and its tributaries. This year we’re celebrating with a longtime Greenway theme, “It’s the Only River in Town”, reminding Denverites of the most unique recreational facility in the Metropolitan area.

The Great Relay Race is very happy to announce the returning prime sponsorships of **THE COLORADO LOTTERY** — “The Game in which Everybody Wins!”, and **KIMN RADIO** — providing “The Best Show in Denver”. The Race also welcomes the **ADOLPH COORS CO.** as a prime sponsor, bringing their “Rocky Mountain Spring Water” even closer to Denver with the new Clear Creek trail approaching their Golden plant. Other supporters of the Great Relay Race include **DHM, Inc.**; **The Denver Water Department**; and **Smith Barney Harris Upham Company**.

Teams of families, friends, corporations and non-profit organizations are again invited to attend this year’s Race. Non-profits may use the Race as their own personal fund-raising event, with the Great Relay Race providing pledge forms for competitors. For more information about the 1987 Great Relay Race, contact the Race office at 753-9079.

Bike Rally To Launch New Parks And Trails Map

Metropolitan Denver’s most complete and comprehensive park and trail map will be released Saturday, June 6, at the Second Annual Park-to-Park Bike Rally, presented by the Urban Design Forum. The Metro Denver Parks and Trails Map, created by the UDF, offers Denver bikers and other outdoor enthusiasts a unique guide to the Metro area’s parks, trails and waterways, combining current and historical information.

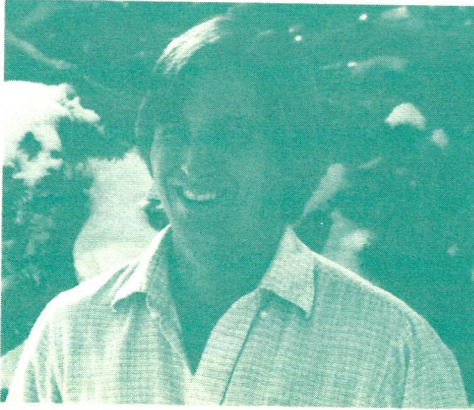
The Park-to-Park Rally is a self-paced, family-style event, encouraging people to stop, look at and learn about the parks in a 17-city/four-county area. Riders will begin at 9:00 at one of five starting points: Four Mile Historic Park or Cherry Creek Shopping Center on the Cherry Creek trail, or Fishback Landing, the Bear Creek Confluence or Riverfront Festival Center on the Platte River Greenway trail . . . utilizing the soon-to-be-completed section of the trail which

extends to Bowles Avenue. Participants will then ride in their chosen direction, enjoying park exhibits and entertainment along the route. The event will conclude with a hot-dog and ice-cream party in the South parking lot of Cherry Creek Shopping Center from 12:00 to 2:30.

Cherry Creek Shopping Center, KHOW Radio, the Colorado Division of Parks and Outdoor Recreation, South Suburban Park and Recreation and the Platte River Greenway Foundation are pleased to help the Urban Design Forum present the Park-to-Park Bike Rally, and the release of the Metro Denver Parks and Trails Map. For more information about either the map or the bike rally please call (303) 753-9084.

Greenway Trail Ranger Update

by Chris Korba, Trail Ranger Supervisor



As of November 1986, I have been filling the position of Trail Ranger Supervisor for the Platte River Greenway Foundation. During this time, I have learned to prioritize my concerns to accomplish the many tasks with which I face on a daily basis. Because I am the only full time Trail Ranger, I have found the most important task that I perform is to be aware and involved with every project that occurs along the Greenway. Though the Greenway is a very popular amenity, it does not always receive the respect it is due, and hence requires an organized effort to keep up with the numerous maintenance demands.

The Greenway Trail Ranger program is unlike any maintenance effort in Denver. Along with my position as supervisor, the Greenway Foundation hires four rangers for a 14 week period from Memorial Day to Labor Day. During these summer months, the bulk of the larger and more involved maintenance efforts take place. The Trail Ranger crew bicycles the length of the Platte River, Cherry Creek, and Lakewood Gulch Trails seven days a week, pulling tool laden cars and performing various maintenance duties. These duties include keeping the trails and surrounding areas as clean as possible by removing litter, sweeping and spraying for weeds, constructing and repairing signs, sanding, and repainting picnic tables and benches, wrapping trees with chicken wire to protect them from beaver, and coordinating light carpentry and any other tasks that present themselves.

The Platte River, Cherry Creek, and Lakewood Gulch trails are swept twice each week via the Trail Rangers walking along the trail using backpack blowers. This effort further removes any thorns, glass, and litter that present hazards to pedestrians and bicyclists. And in our "spare" time, the rangers and I plan, plant, and maintain all flower gardens and other new plantings along the Greenway. This includes a small tree farm which this year will contain six species and over 150 trees. The trees will be large enough to plant along the Riverbanks and Greenway parks within one to two years. The Rangers are also on hand to give directions and first aid assistance to Greenway users as well as assist with Greenway Foundation sponsored special events.

For the other nine months of the year I work alone and accomplish a variety of tasks through a variety of methods. Many of the same tasks mentioned above continue to occur with manpower originating from volunteer efforts. These civic minded citizens herald from many different groups including the Denver Area Council of Boy Scouts, the Mountain Bell Pioneers (a retired group of Mountain Bell Employees who perform public service activities), Bear Creek and Green Mountain High Schools and several private individuals wishing to help. Though volunteer labor is sporadic and cannot be expected to occur, the various groups thus far had fun and expressed interest in returning to help out the Greenway in future years.

The winter months pose their own problems including gardens to be mulched, plantings that still require hand watering, inspection tours, and snow removal. During this part of the year, D.U.I. crews are used extensively. Much of my time in the winter months is also spent scheduling and overseeing work accomplished by the Denver Parks Crews. Through the help of these crews, the electrical and plumbing systems are repaired and any other jobs that require tradesmen are completed.

Another agency with which I work closely is Urban Drainage and Flood Control District. This agency helps me with situations such as erosion control and large debris removal. Three times each year the metropolitan waterways are cleared of large debris in the water and along the banks. Urban Drainage also brings in large equipment and labor to repair erosion problems that threaten the trail and both banks of the River. I rely a great deal upon Denver Parks, Urban Drainage, and other governmental agencies to complete the larger tasks that are beyond the scope of the Greenway Trail Ranger program. Without their help, many tasks would be impossible for me to complete.

All of the information listed above is just a sampling of the work completed along the Greenway and its adjacent waterway trails. Through the cooperative maintenance efforts described in this report this work will continue to help the Greenway remain the one-of-a-kind multi-recreational and cultural resource that it is today.

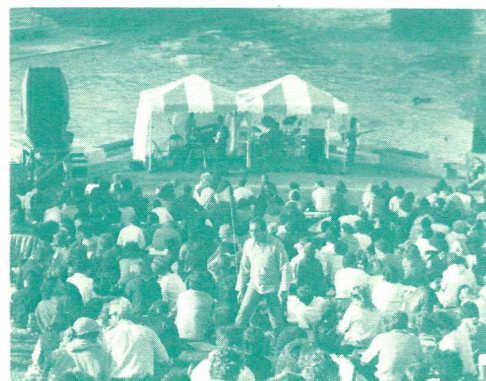
1987 Concerts On The Green—The Best Deal In Town!

The 1987 Concerts on the Green series is back for yet another year thanks to the return of several longtime sponsors and the arrival of some new valued supporters. This one-of-a-kind musical series will kick off on **Wednesday, June 24th at 6:30 p.m.** with a return engagement by **HOT RIZE** as well as their good friends **RED KNUCKLES AND THE TRAILBLAZERS**. These nationally known groups promise an evening of top notch bluegrass and country-western favorites. Our corporate sponsor for the evening is the **MILE HIGH AND INTERSTATE KENNEL CLUBS**, with media sponsors **KBRQ A.M. AND F.M. COUNTRY** and the **ROCKY MOUNTAIN NEWS** helping promote the special night of **FREE** musical entertainment.

On **Wednesday, July 29th, IMAGES** will return for the fourth consecutive year beginning at **5:30 P.M.!** Due to the popularity of this superb jazz quartet, **IMAGES** has agreed to increase their performance to three hours, and promise to feature several selections from their newly released album "Viewpoint". Also returning for the fourth consecutive year as a Concert on the Green corporate sponsor is **FIRST COLORADO BANK AND TRUST**. Our media sponsors for the evening are **KADX F.M. JAZZ 92**, and the **ROCKY MOUNTAIN NEWS**.

Our third and final concert for 1987 will take place on **Wednesday, August 26th** beginning at the usual time of **6:30 p.m.** featuring an evening of "big band" jazz and pop favorites via the talents of **MOMENT'S NOTICE** with **SUZY NELSON**. Our corporate sponsor for this closeout concert is **MAXFIELD AND FRIENDS** restaurant located at 15th St. and Platte River Drive, just one block west of Confluence Park. **KADX** and the **ROCKY MOUNTAIN NEWS** will again serve as media sponsor for this final evening of musical fun.

PEPSI COLA BOTTLING CO. OF DENVER will again provide complimentary beverages at all three concerts, and all concerts are held at the **Confluence Park Amphitheatre**, located along 15th St., approximately one mile west of Market St., behind the Forney Transportation Museum. Thanks to the generosity of our many sponsors and entertainers, we can promise three evenings of incomparable **FREE** entertainment. Arrive early as parking space is **very** limited. Bring a picnic supper and your friends, family, and neighbors to all three "Concerts on the Green", truly - "The Best Deal in Town!"



Two Rivers—Winter Photographic Exhibit Presented by The Greenway Foundation

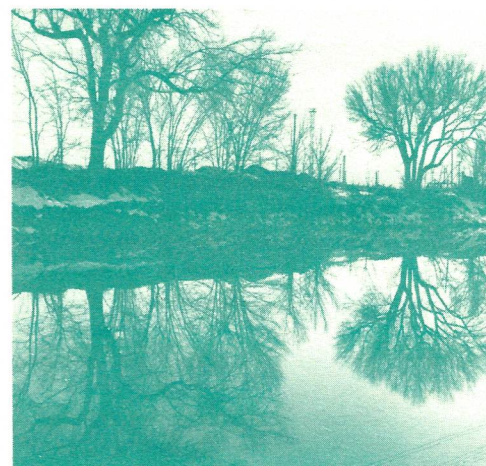
by Don Etter

The "river waters" and the "fragile edge of green" known as the Platte River Greenway are celebrated in a series of black and white photographs on exhibit in the gallery at Grassfield's men's store through May (2850 East 2nd Avenue, Cherry Creek North). The photographs, taken during the winter of 1986-1987, are the work of Denver photographer and historian, Don Etter and include images taken along the Denver course of the South Platte River from Grant Frontier Park to Globeville Landing Park.

The exhibit, entitled "Two Rivers—Winter", takes its theme from Thomas Hornsby Ferril's 1934 poem "Two Rivers" in which Ferril focuses on the setting and history of Cherry Creek and the South Platte River. In his images, and in an introductory essay which accompanies the collection, Etter calls further attention to the importance of recognizing and preserving the essential beauty of these

two rivers. The photographs are part of a comprehensive photographic essay, on which Etter is currently working, concerning the character of Denver.

The exhibit has been mounted through the collaboration of Max Grassfield, proprietor of Grassfield's, Etter, and the Greenway Foundation. Arrangements for an opening reception on April 16 were undertaken by Jeff Shoemaker, Executive Director of the Greenway Foundation. Both Grassfield and Etter participated in the project because of their commitment to the importance of keeping Denver a liveable city and their recognition of the Greenway Foundation's contribution to that objective. Everyone is encouraged to stop by Grassfield's and walk through this fine collection of unique photographs.



Conservationists Plant Arbor Day Trees On The Greenway

by Hugh Gardner-Wildlife 2000

Several leading environmental and conservation groups joined forces in a model Arbor Day project this past April to enhance two Denver parks largely set aside as natural areas. The two sites selected for the project were Overland Pond Educational Park, a small nature preserve adjacent to the South Platte at West Florida Avenue, and Bear Creek Park along West Hampden Avenue between South Sheridan and South Lowell. Tree planting took place at Overland Pond Educational Park on April 11, and at Bear Creek Park on April 26.

Sponsors of the project included Wildlife 2000, the Sierra Club, Trout Unlimited, the American Wilderness Alliance, the Colorado Mountain Club, the Colorado River Outfitters Association, the Western River Guides Association, and the Colorado Wildlife Federation. Also co-operating in the beneficial effort were the Denver Parks and Recreation Department, the Platte River Greenway Foundation, the Colorado Federation of Garden Clubs, and Denver Urban Forest.

Planning and coordination for the events was handled by Wildlife 2000, formed two years ago to promote the humane management of wildlife. Wildlife 2000 has worked with many area municipalities and agencies to live-trap problem animals and relocate them to mountain watersheds, where they are needed to restore riparian habitat so that fish and other wildlife can flourish. A program of live-trapping and relocation of excess beavers in

Denver parks is scheduled to begin this summer.

Even though both Overland Park and Bear Creek Park have been designed as natural areas where beaver have a rightful place, the beaver's persistent tree-cutting and gnawing to sharpen their teeth are often irksomely destructive. The "Trees for Wildlife" effort therefore concentrated on replacing trees the beavers have taken down, planting their favorite food trees along shorelines as inducements to stay away from more valuable trees, and installing various protective measures to control their chewing activities. Other plantings were made of fruit and seed bearing trees for birds and other wildlife. Trees were acquired from private nurseries, the state forest service, and by planting cuttings of native willows and cottonwoods. About 800 trees were collectively planted at the two parks.

A similar event on a larger scale is now being planned for next year along the Riverbanks and parks that collectively make up the Platte River Greenway. Supporters of urban wildlife management are invited to make a contribution to help pay for the trees and other expenses. For each contribution over \$10, Wildlife 2000 will plant a tree in the donor's name and send a personal certificate of appreciation suitable for framing. Make checks payable to Wildlife 2000, P.O. Box 6428, Denver, CO 80206. For more information about this exciting future event, write or call Wildlife 2000 at 333-8294.



The Denver Waldorf School Clean-A-Thon — 1987 (the Cooperative Benefits Continue!)

by Karen Baker - Denver Waldorf School

The Denver Waldorf School held its Fourth Annual Clean-A-Thon of the Platte River Greenway on Saturday, May 16, 1987. Students from the Denver Waldorf School spent the day cleaning the banks and pathways of a 10 mile stretch along the Platte River Greenway. The goal of this community service project was to assist in returning the Greenway to its natural beauty for the enjoyment of park users during the warm months ahead, and to raise monies for the Denver Waldorf School Building Fund. Both of these goals were reached.

More than 150 students, teachers, and parents participated in this extremely successful event, a winning combina-

tion for the Greenway and for the School. Students gathered more than 200 bags of litter. It is indeed something remarkable to see children from ages 4 to 14 working side by side to make our city look better. More and more of the people of Denver are discovering the Platte River Greenway to be a wonderful biking and jogging path, as well as a one of a kind rafting and picnic area. This entire area has become one of the finer features of living in Denver. It needs to be clean to be beautiful and we work very hard each spring to make sure it gets that way.

Donations to the Denver Waldorf School Building Fund are still welcome. The



children worked very hard to clean this area and we would be so grateful if you showed your appreciation by contributing to this fund. The address of the Denver Waldorf School is 735 East Florida Avenue. For more information, call 777-0531.

Your Support Makes The Difference!

HELP US TO CONTINUE OUR EFFORTS TO IMPROVE, MAINTAIN, AND PROMOTE THE GREENWAY

ANNUAL MEMBERSHIP

\$30.00 for you or a friend.

Included in the membership is a Membership Card entitling you to:

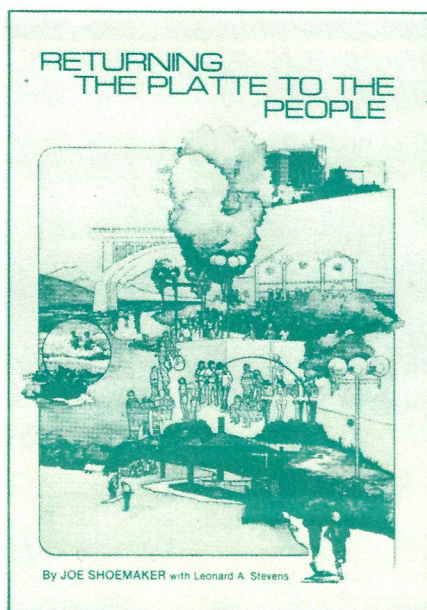
- Notice of upcoming special events held along the Greenway during the year.
- All new members will receive a copy of our book "Returning the Platte to the People."
- A 20% discount on food and spirits for up to 4 persons at Zang's Brewing Co. (offer applies to any one evening any-time during that year).
- All copies of the newsletter printed in the year you are a member.

COMMEMORATING MEMBER

For \$100.00, have a contribution made towards the Greenway Tree Fund in the name of friend or loved one. (Also includes all privileges of an Annual Member).

CORPORATE MEMBER

\$250.00 includes a limited edition print by well known artist William Condit entitled "Seasons Along the Platte." All prints are signed and numbered by the artist (also includes all privileges of an Annual Member).



THE GREENWAY FOUNDATION
1666 SOUTH UNIVERSITY BOULEVARD
DENVER, COLORADO 80210
(303) 698-1322

1987 Greenway Calendars of Events

Wednesday, May 20th
Greenway Experience Press Day

Monday, May 25th
Summertime Greenway Trail Ranger
Program begins

Saturday, June 6th
Urban Design Forum Park to Park Bike Rally

Sunday, June 21st
Eighth Annual Great Relay Race

Wednesday, June 24th
Concert on the Greenway #1
6:30 p.m.

Wednesday, July 29th
Concert on the Greenway #2
5:30 p.m.

Wednesday, August 26th
Concert on the Greenway #3
6:30 p.m.

Monday, September 7th
Summertime Greenway Trail Ranger
Program ends

Sunday, September 13th
Friends of the River Award Party

Non-Profit
U.S. Postage
PAID
Denver, Colorado
80202
Permit #3657