

# Greenway

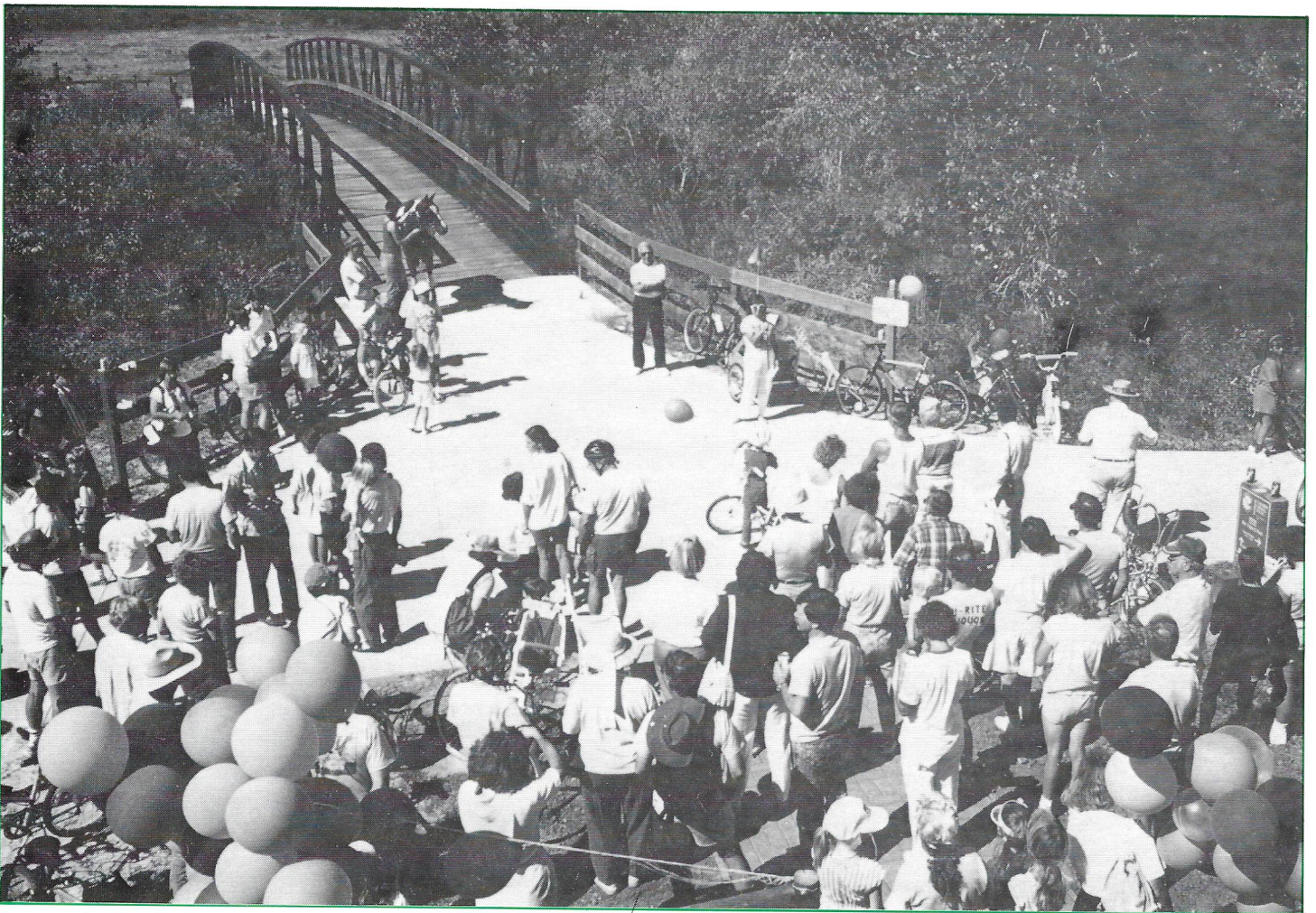
N E W S L E T T E R

Vol. 12 No. 2

Fall 1990

## Cherry Creek South Greenway is Officially Dedicated!

Merle D. Grimes  
Greenway People, Inc.



Representatives from Parker, The Greenway Foundation, Urban Drainage and Flood Control District, State Parks and Recreation, E-470 Authority and Citizens officially open the new Cherry Creek Greenway-Parker Extension. Photograph by J.P. Dant.

**G**reenway Foundation representatives along with Town of Parker officials and citizens, officially opened the Parker reach of the Cherry Creek Trail on Saturday, September 15, 1990.

Ann Waterman, Mayor of Parker, hosted the event along with Joe

Shoemaker, Greenway Foundation Chairman; Mr. Scott Tucker, Executive Director of the Urban Drainage and Flood Control District; and Mr. John Arnold, Executive Director of the E-470 Authority.

Citizens on horseback, bikes and in jogging attire listened as the sponsors

gave tribute to the inter-governmental cooperation and public-private sector involvement which made the first phase of this ambitious project a possibility.

The 8.5 mile Greenway features separate bike and equestrian paths, four pedestrian bridges and beautiful riparian habitat including a wetland pond near



the E-470 viaduct. In addition, the Bar CCC Park at the confluence of Cherry Creek and Sulphur Gulch was completed this past spring. The park amenities include a picnic shelter, restrooms, play fields, an access/parking area.

Future Parker improvements along the Cherry Creek Greenway will be the completion of the Parker Regional Park with its equestrian use theme, expansion of Challenger Park located at Lincoln Avenue and the addition of educational nature trails, signage and programs.

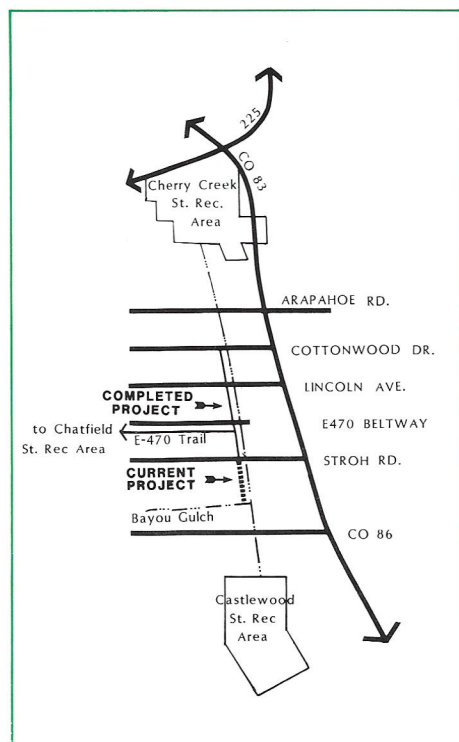
The E-470 Authority will be connecting its bike trail to the Cherry Creek Trail in November 1990. Once completed, the E-470 trail will provide connections to the South Platte River Greenway and Chatfield State Recreation Area, marking the first major connection of our metro state recreation areas with trail corridors.

Our next effort has now focused on

unincorporated Douglas County south of Parker. Even before the Parker reach was completed, the Greenway Foundation and Douglas County began the task of extending the trails to Castlewood Canyon State Recreation Area. These efforts have paid off with construction now underway that will result in an additional mile of trail which heads southward, due to be completed by early 1991.

Our goals for next year are to complete the first phase of the southward extension (approximately 5.5 miles) to Bayou Gulch and assist in providing connector trails to the Pinery and High Prairie Farms residential areas.

We are extremely excited that trails are continuing to be successfully expanded in Colorado. Your support provides us with the necessary drive and commitment to get the job completed. For that reason we extend our warmest appreciation and look forward to your continued support.



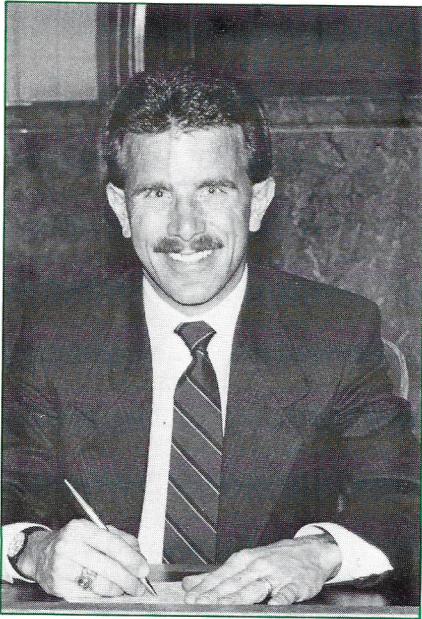
*With the Parker Reach completed, the Greenway Foundation is now working with Douglas County on the next reach southward to Bayou Gulch. The Foundation will also be coordinating their efforts with Arapahoe County and the City of Aurora to connect the trail with Cherry Creek State Recreation Area.*



*The Cherry Creek Greenway provides a myriad of recreation activities including bike riding, horseback riding, jogging and hiking. Users enjoy a safe and fun experience set in the natural beauty of Cherry Creek.*  
*Photograph by J.P. Dant.*



# DIRECTOR'S CORNER



Jeff Shoemaker  
Director

Dear Friends:

1990 marks the beginning of a third decade for the Platte River Greenway Foundation (hard to believe!), and we are very excited about the way this decade has begun.

Our largest effort for the year has been the completion of Phase I of the Cherry Creek Trail project through the Town of Parker. This 8.5 mile multi-use trail was officially dedicated on September 15th and is just the beginning. Within the next 2-3 years we are committed to extending the trail in either direction; 4 miles to the north and 11 miles to the south, which will directly connect two of Colorado's finest public amenities: Cherry Creek State Recreation Area and Castlewood Canyon State Park. (For more information concerning how to enjoy this marvelous addition to the metro area Greenway system, refer to the article on page 1).

1990 also marked the beginning of a new and exciting event along the Greenway - the Original Denver Duck Race. Hosted by the Denver Active 20/30 Club, a non-profit men's organization dedicated to

benefitting Children, the Race featured over 14,000 rubber ducks which floated downstream from Colfax Avenue to Confluence Park. This promotional event greatly supported the efforts of both the Colorado Christian Home and the Greenway Foundation. (Please note the related article on page 5).

Concerts on the Green, our long standing and free jazz concert series, returned for the 11th consecutive year. This year's concerts featured the talents of Hot Tomatoes, Queen City Jazz Band, and Images thanks to the respective support of the following sponsors: Denver Active 20/30 Club, Mile High and Interstate Kennel Clubs and First Colorado Bank and Trust. Over 5,000 music lovers enjoyed these one of a kind evenings along the banks of the South Platte. Our gratitude goes out to all those involved who helped make Concerts on the Green - 1990 a continued success.

The long awaited Fishing is Fun project at Overland Pond Education Park will finally be completed by the end of the year. Thanks to the generosity of the Denver Foundation, the Colorado Division of Wildlife, the Denver Active 20/30 Club and a host of individual supporters, the pond within Overland Park will feature a fishing dock as well as the deepening of the pond itself which will allow the pond to sustain a larger and better class of fish. In addition, the Division of Wildlife will periodically stock the pond during the course of the year when different special events take place at the Park.

Finally, the popularity and success of the Greenway Experience continues to excite and impress all of us! As you'll note via the related articles on pages 4 and 5, everyone involved in this unique learning adventure finds it to be a rare and rewarding educational opportunity.

Because of the successes we've had with the program over the last several years, meetings took place between our office and the Denver Public Schools administration. The

result of those meetings is that as of next school year (Autumn '91), the Greenway Experience will be expanding into an additional four high schools, which should allow the number of involved students to grow from 5,000 per school year to hopefully over 25,000 participants from throughout the metropolitan area. Because the program centers around high school students teaching elementary students, with the parents of the latter joining in the tour aspect of the program, the benefits of the Greenway Experience will extend far beyond those 25,000 young people touring the Greenway.

This unique indoor/outdoor classroom excursion continues to receive national attention and therefore promises to focus more and more attention not only on the "Only River in Town" but on the success of this type of learning experience as well.

Any successes we are able to produce continue to depend on the support we receive from the community. As one of those supporters, we offer our thanks. The Platte River Greenway Foundation is a small foundation, but we like to think we are able to accomplish big things. After sixteen years, we are more dedicated than ever to continue our efforts to construct, preserve and promote Greenways throughout the metropolitan area.

If you have any questions or concerns related to our current efforts, areas you feel we should learn more about, or any other matter you feel deserves our attention, I encourage you to contact my office directly.

In the meantime, on behalf of my Board of Directors, best wishes for a happy and safe holiday season and a successful 1991!



---

# THE GREENWAY EXPERIENCE:

## From the other side

---

Carl Crookham, Greenway Experience Coordinator

---

**I**n a number of previous issues of this newsletter, we have told you about our educational program—The Greenway Experience. This unique learning opportunity has reached many thousands of children and parents in the Denver Metro area. We thought you might find it interesting to hear about the program from the children, parents and teachers who take the tours as well as from one of the teen tour guides.

### THE TOUR GUIDES

The Greenway Experience works because of the energy and enthusiasm of the teen tour guides. The following section was written by one such guide. Rodney Beavers is a senior at Metropolitan Youth Education Center and earned the recognition of "Outstanding Guide for 1989".

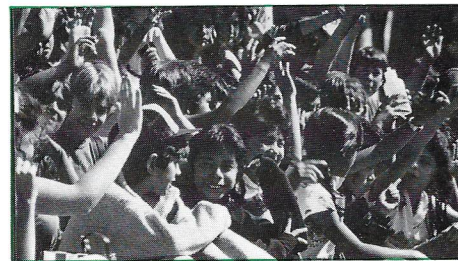
---

*My name is Rodney Beavers and I attend Metropolitan Youth Education Center. M.Y.E.C. is a school that gives high school students a second chance, after dropping out of their regular high school. I dropped out of high school for 2 years. When I moved to Denver from California, I realized I needed an education, so I found M.Y.E.C. and enrolled in a class called the Greenway Experience. I'm now in the 12th grade and excited to be graduating this year. There's a couple of things that I'll miss at M.Y.E.C. That's my friends, teachers, and The Greenway. (Well more than a couple)! My friends and teachers make me feel comfortable at all times, when I'm happy or even if I have a problem. When I'm on tour I can leave my worries behind and concentrate on teaching the children about their environment. The Greenway Experience actually helps me understand children, and also made me realize why, when I was a child, I asked that question, that all children ask: "WHY?" Now that I look back I see I'm not alone. The Greenway is an Experience that no teenager should be without.*

---

### THE CHILDREN

The Greenway Experience targets children in grades 2 through 6. The children bond quickly with their teen guides and, by the end of the day, are like family. They write hundreds of letters thanking the guides for their day along the River. We love to read them and put them up in the room.



Sept, 23

Dear DAN,

I liked the field trip.  
It was fun. Thank you for  
teaching us a lot of stuff.  
Ruby Hill was big.  
The ghost town is old.  
The panning was fun.  
Thank you for helping us  
find gold. The water was  
cold, But it was fun.  
I am glad the water is  
clean. It is not nice to  
pollute the water. Then the  
fish don't have a home.  
DAN you were nice. I had  
lots of fun.

Sincerely,  
LeeAnn

---



## THE PARENTS

It's always fun when some parents can join us on a tour. The guides make sure they feel welcome, and by the end of the tour they find themselves panning for real gold with the children.

*I toured the Greenway Experience today with my daughter and her classmates. It was an excellent trip. It was not only informative but also fun. The material was brought to life by the instructor and his tour guides. The children loved panning for gold.*

*I am really impressed with this program, not only because of its value for my daughter but also for its value to the young*



*people who were guiding us. What a wonderful way for them to learn, i.e. to be in the respected role of a teacher. They were trying very hard to do a good job, be mannerly and helpful to students, and as one guide put it "be role models" for the younger children.*

*We need not only this program but more like it. These guides are learning not only their subject but they're growing as people and gaining self-confidence. I wish all educational programs could be as successful. If you have choices to make, please keep this program as part of your curriculum.*

*Sincerely,  
Lynn Dunlap*

## THE TEACHERS

The thought of turning your 3rd grade class over to a team of teen tour guides might be a little scary for some teachers. Those who have done it,

however, will tell you that it's one of the best experiences of the year. We give tours to students from Denver Public Schools and all surrounding school districts.

*As we debriefed this morning, following our Greenway Experience yesterday, I realized how meaningful our experience had been. My class retained so much information, it reminds me of the quote, "Tell me, I forget. Show me, I remember. Involve me, I understand."*

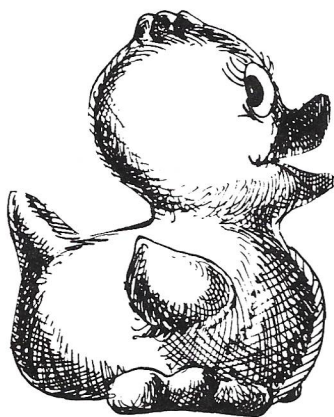
*Their enthusiasm has apparently been carried home as I have had requests from students and parents for copies of the map so that they can take the tour on their own, with the kids being the teacher of the family.*

*I was very impressed by the skills of our student guides. They were obviously well coached and in addition to that they showed good ability to keep the kids on task and still have fun with them.*

*In summary, in my 20 years of teaching experience, the Greenway ranks as one of the best field trips ever! See you next year!*

*Sincerely,  
D. Smith, 4th grade teacher,  
Mark Hopkins Elementary*

# First Annual "Original Denver Duck Race" Benefits The Platte River Greenway

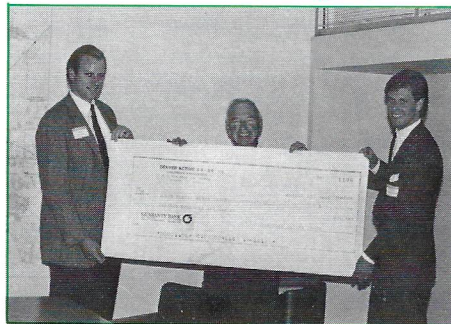


Scott Southworth  
Denver Active 20/30 Club

**O**n June 10, 1990, over 2,500 enthusiastic fans viewed nearly 15,000 little rubber ducks "paddle" their way down a mile long stretch of the Platte River Greenway, finishing at the bottom of

the Confluence Park boatchute. This wild and fun event was sponsored by the Denver Active 20/30 Club to benefit the South Platte River Greenway Foundation and the Colorado Christian Home.

The first annual "Original Denver Duck Race" raised over \$60,000 for Denver's kids via this exciting and



*Greenway Foundation Chairman Joe Shoemaker accepting the donation from the Denver Active 20/30 Club, as a result of a successful "Original Denver Duck Race".*

unique event. One that promises to be even bigger and better next year.

In addition to two live bands, an inflatable castle for the kids, perfect weather and a day the whole family could enjoy, 45 lucky participants shared in prizes ranging from golf clubs and dinners for two, on up to two round trip airline tickets to London and a 1990 Toyota Four Runner!

The \$15,000 donated to the Greenway Foundation will assist with the Foundation's efforts to complete the Fishing is Fun project at Overland Pond Educational Park as well as provide additional support for the Greenway Experience. (see related articles on pp. 4 & 5).

On behalf of the Denver Active 20/30 Club, thank you for helping us make this year's event such a success. We're looking forward to seeing you all there next year, so start getting your ducks in racing condition soon!



# South Platte Gets Help From Coors Volunteers

**M**inus a few tires, trash and bicycles, the Platte River is now a little healthier, thanks to the Pure Water 2000 Platte River Cleanup September 1.

More than 100 citizens and employees of Coors Brewing Company and Coors Distributing Company (CDC) in Denver spent part of their Labor Day weekend foraging the banks of the South Platte River. Armed with gloves, trash bags and a mission, the group scoured nearly four miles of the banks and trails for the South Platte River Greenway area. After three hours, more than 200 bags stuffed with trash, debris and litter lined the riverbanks ready for proper disposal by city crews.

"Through the work of many dedicated organizations, the Platte River has become an incredible recreational area in Denver that is used by thousands of runners, bikers and walkers every year," said Bob Cardenas, marketing manager, CDC. "We organized the Platte River Cleanup so we could really have an impact."

"This was very successful for a first-year event, and our volunteers are already asking if we can do it again next year," Bob said. The cleanup took place in two areas: from 8th Avenue to Confluence Park, and from Florida Street to Alameda Avenue.



*The future generation, as represented by 90 seventh-graders from Newton Middle School, helps keep their environment healthy by participating in the Pure Water 2000 South Platte River Cleanup, so-sponsored by Coors and Front Range Beverage Company.*

The efforts were noticed immediately as many of the cyclists using the Platte River Greenway trails stopped to thank volunteers for cleaning up the area.

The reasons for spending a couple of hours picking up other people's garbage varied from volunteer to volunteer, but the motivating factor they all had in common was cleaning up Denver's waterways.

Joshua Anderson, 11 and his brother and sister, who moved to Denver in July, were helping. "Back in Florida, we used to do a lot of things to help the environment and we thought we should do something to help here."

Laura Maughan and her daughter had strong convictions about the effort. "Water is extremely important to the environment and we had better pitch into do something," Laura said. "Industry needs to pitch in and so do the people".

In mid October, Pure Water 2000 struck the South Platte River again, when students from Newton Middle School picked up trash and pulled weeds along the riverbanks and nearby trails.

Front Range Beverage Company, a

local Coors distributor, provided the trash bags and two buses to transport approximately 90 seventh-graders who volunteered to help cleanup the area near West Bowles Avenue and South Sante Fe Drive on October 17.

"We're proud to sponsor projects that help keep our young people informed about the earth's environment," said Mel Linn of Front Range Beverage Company. "After all, they are the future generation that has to live here."

Launched August 21, Pure Water 2000 is a national water quality and conservation program sponsored by Coors Brewing Company and its distributors to garner a nationwide commitment to conserve and restore America's water resources by the end of the decade. The program has several facets including local cleanup projects throughout the country. More than 200 of Coors distributors are coordinating local projects to increase awareness and stimulate ongoing cleanup strategies. These projects range from spending several days cleaning up lakes, riverbeds, beaches and shores, to promoting public awareness and educational campaigns.

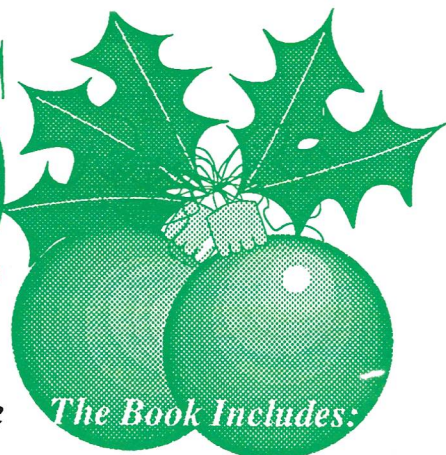


*Newton Middle School seventh-graders picked up trash during a Pure Water 2000 South Platte River cleanup on October 17. About 90 seventh-graders participated in the event co-sponsored by Coors and Front Range Beverage Company.*



# SEASONS GREETINGS

## To Friends Of The Greenway



As the holiday season is now upon us, we would like to make available to our special members a rather unique gift giving idea.

Your tax deductible contribution of \$30 will make someone special (yourself included) a year-long member of the Greenway Foundation. Membership will include a copy of **Pedal Stops, A Guide To Denver Bike Paths.**

The book can also be purchased separately during this holiday offering for \$10 (also tax deductible).

### The Book Includes:

- **Detailed Maps Covering the Following Areas**
  - Cherry Creek
  - Cherry Creek Reservoir
  - Highline Canal
  - Platte River
  - Bear Creek
- **Restaurants Accessible From Paths**
- **Bike Shops Accessible From Paths**
- **Parks & Other Points of Interest Along Paths**
- **5" x 5" Flip Page Format**
  - For Easy Reference
  - Compact Size Makes Guide Easy to Carry
- **Full Color**
- **High Quality, Durable Stock**
- **Large Fold Out Map of Entire Metro Bikeway System Included**
- **As Seen in Fine Metro Area Bookstores & Bikesops**

Greenway Foundation  
1666 S. University Blvd.  
Denver, Colorado 80210

☐ **Yes.** I would like to give a Greenway Foundation Membership to:

Name: \_\_\_\_\_ Phone: \_\_\_\_\_

Address: \_\_\_\_\_

My \$30 per membership is enclosed. Please send my membership's copy of Pedal Stops to:

Name: \_\_\_\_\_

Address: \_\_\_\_\_

☐ **Yes.** I would like \_\_\_\_ copy(ies) of Pedal Stops sent to:

Name: \_\_\_\_\_

Address: \_\_\_\_\_

My \$10 per copy is enclosed.



## BOARD OF DIRECTORS

Joe Shoemaker  
*Chairman/Treasurer*

Bill Avery  
*Vice Chairman*

Larry Ambrose  
Edna Doyle  
Larry Elrod  
Steve Metcalf  
Jerome & Cynthia Nagel  
Eldon O'Neal  
Paul O'Rourke  
Charlie Roos

Jeff Shoemaker  
*Director*

## Your Support Makes the Difference!

### ANNUAL MEMBERSHIP

\$30.00 for you or a friend.

Included in the membership is a  
Membership Card entitling you to:

- Notice of upcoming special events held along the Greenway during the year.
- All new members will receive a copy of our book "Returning the Platte to the People"
- All copies of the newsletter printed in the year you are a member.

### COMMEMORATING MEMBER

For \$100.00, have a contribution made towards the Greenway Tree Fund in the name of a friend or loved one. (Also includes all privileges of an Annual Member).

### CORPORATE MEMBER

\$250.00 includes a limited edition print by well known artist William Condit entitled "Seasons Along the Platte." All prints are signed and numbered by the artist. (Also includes all privileges of an Annual Member).



South Platte River Greenway Foundation Inc.  
1666 South University Boulevard  
Denver, Colorado 80210  
(303) 698-1322

Non-Profit  
U.S. Postage  
PAID  
Denver, Colorado  
80202  
Permit #3657