

Greenway

N E W S L E T T E R

Vol. 12 No.1

Spring 1990

Work to Continue on the Cherry Creek Greenway—Parker Extension

Merle D. Grimes



Trail building continues along the newest addition to the metro area Greenway system—Cherry Creek South.

Construction of the Cherry Creek Greenway for 1990 got underway during April. Pedestrian bridges will be installed at the Parker Regional Park and at the Clarke Farms residential community. From June to September, over six miles of concrete bike trail and parallel soft surface equestrian trail will be constructed. Completion of the trail and bridges is scheduled by Labor Day, 1990.

One of the most exciting aspects of this endeavor is how enthusiastically the Parker community rallied behind the project in an effort to raise \$25,000 to meet the Boettcher Foundation's challenge grant of \$100,000. In less than one year, over 1,000 individuals and businesses bought trail at \$25.00 a foot, collectively raising over \$30,000.

Girl Scouts went door-to-door; school kids worked odd jobs, donating their pay to the Greenway; equestrian organizations donated both labor and money. It was a community wide effort

that demonstrated the Town of Parker's overwhelming support for the Cherry Creek Greenway.

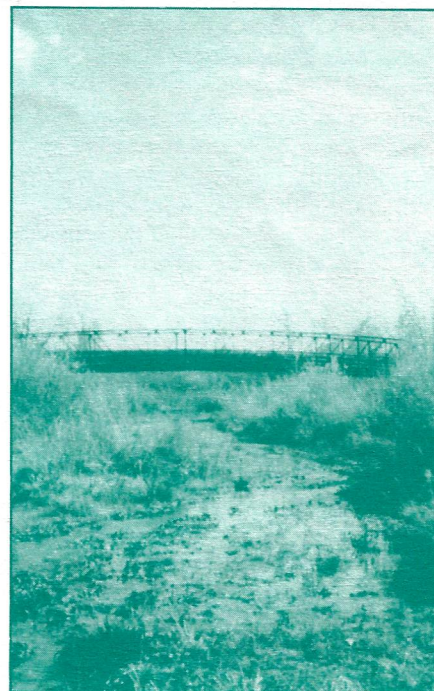
The newly constructed trails will connect to the existing trail located at the Bar CCC Park and Stroh Ranch development, combining to create over 8 miles of continuous recreational pleasure.

More than just a trail, users will enjoy some of the most beautiful and unique open space in the metropolitan area. Open desert like areas of rabbit brush, yucca and dry land grasses give way to lush cottonwood and willow woodlands. The trail meanders onto ridge tops that provide views to Pikes Peak and the Rockies. Wildlife including mule deer, fox, coyote, birds of prey and more are plentiful. The trail and open space system provides wildlife viewing opportunities while protecting and preserving valuable habitat.

The success of the Cherry Creek Greenway is due to a grass roots effort

that began as a dream only 3 short years ago. The Greenway Foundation would like to thank and acknowledge all those who made this exciting project a reality.

- The Town of Parker
- Boettcher Foundation
- Gates Foundation
- Colorado Division of Parks and Outdoor Recreation—Colorado Greenway program
- Urban Drainage and Flood Control District
- The citizens and businesses of Parker
- Parker Water and Sanitation District



The natural and unspoiled beauty of the Cherry Creek South Greenway is unmatched in the metro area.

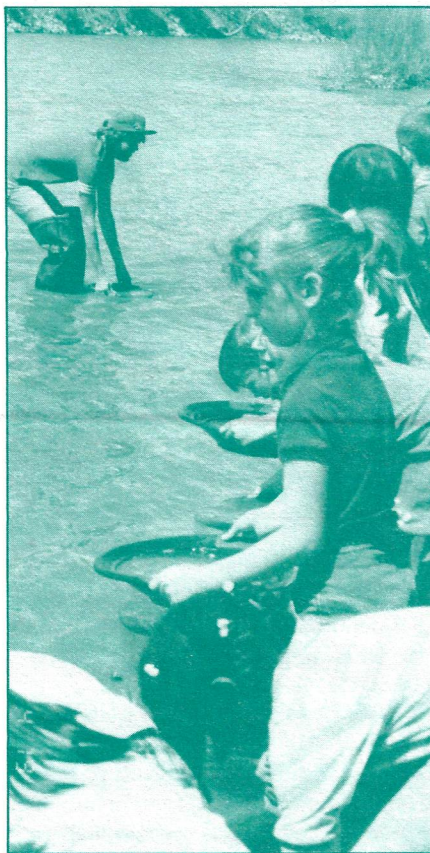
Greenway Experience, International in the 90's

Carl Crookham
Greenway Experience Coordinator

My name is Carl Crookham and those of you who know me know that I can talk the bark off a tree. With this in mind, it's interesting to note that the most inspired, most creative and most meaningful thing I ever did as a teacher was to shut-up, for six seconds. These particular six seconds occurred in 1973. I had been teaching at a small junior high for four years. It was my great fortune to have teamed up with Al Wuth, Pat Heifner, and Geoff Muntz, three of the most outstanding teachers this city will ever see. As the new kid on the block, I was being given my first in-depth look at environmental education. We had a small but enthusiastic ecology club and had adopted a small park on the east bank of the Platte River at Evans Ave. Most of the usual things had been done. Bird houses were installed, trees had been planted and we were cleaning it regularly. We started using it as a classroom and the kids loved it. Then it happened. A teacher, who had not been involved in our project, stopped me in the hall and told me that some of his students were excited about taking a trip to the park but he didn't know what all we were doing there. Then he asked if I would take some time to show him. I opened my mouth to respond but was stopped short by a firm tug at my sleeve and an excited voice saying, "We can show him, Mr. Crookham!" I looked down at the two 8th grade girls. They were students who had done almost all of the activities at the park since we started. So I said, "What ya got in mind?" The next six seconds set the stage for the development of the Greenway Experience and for thousands of people to learn about the history and ecology of the Platte River in Denver. The girls said that instead of us telling the teachers what to do, we should just send several kids, who know what to do, with each class. We gave it a try and it worked great. The word spread to other schools and by 1975 we were polished-up and hosting tours for schools from around the city.

From the beginning we noticed that some of our best guides were at-risk

students. These underachievers were getting great positive strokes towards their self-esteem from leading the tours. Their attendance and work in all classes were improving. This was exciting to us because a high percentage of our students were at-risk. The other exciting observation was that the visiting elementary children learned faster from our teen guides than their teachers had ever seen them learn from any adult. This amazing transfer of attitude and knowledge from teen to child and the



Youngsters pan for gold as part of the unique and exciting Greenway Experience.

friendships formed between them are still the key to the program's success.

The program grew slowly but steadily during the next few years. Support from the school system was painfully slow in coming. My three side kicks moved on to other schools and other opportunities. And then I got a major break. I hooked up with Jeff Shoemaker and the Platte River Greenway Foundation. Jeff told me that, as the initial construction phase of the Greenway along Denver's South

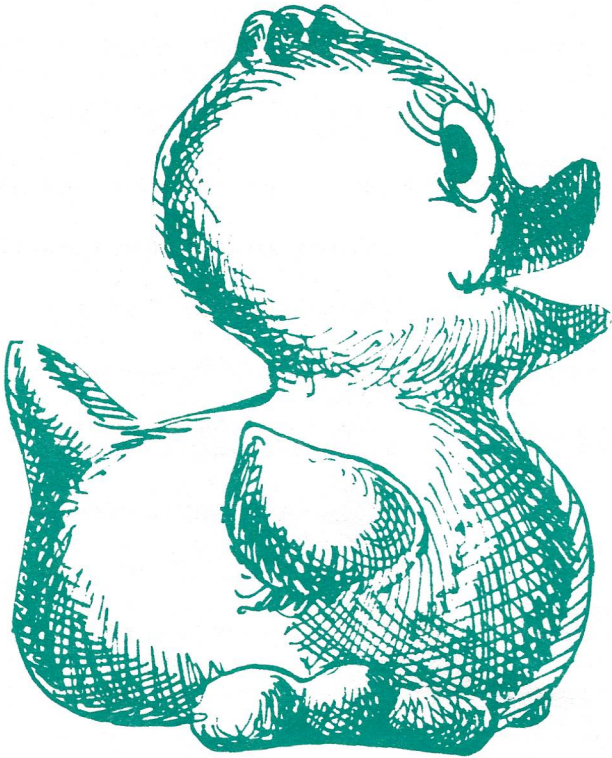
Platte River was nearing completion, the emphasis was shifting to educational use. I was delighted and went to work expanding the program to include six Platte River parks and about five miles of the Platte River Greenway. This was the connection the program had needed. The new 3½ hour super tour became an overnight success. Some 35,000 children and adults have taken the Greenway Experience tour and, because of the way the tour is structured, an additional 100,000 people have received the word, "it's your River, come and enjoy it, learn from it and care for it." Because of this stair step transfer of knowledge. I coined this catch phrase for the program: **Teachers teaching teens to be teachers teaching children to be teachers teaching others.**

In the past three years the Greenway Experience has grown in popularity to a point where over 150 tour requests a year must be turned down. Therefore we are working hard to expand the program to other high schools. Some funding is now available and we hope that by 1991 we can double our tour schedule.

Because of the success of the Greenway Experience, I have hosted a variety of conferences on environmental education. I was proud to represent the Greenway Foundation, Denver Public Schools and the State of Colorado at these events. I personally learned a great deal and shared my experiences with the others present. My most recent invitation is to take the Greenway Experience to Australia. The purpose is to attend a world conference on environmental education. I will do a presentation and a workshop on the Greenway Experience during the five day conference and then tour the country for fifteen days with the conference leaders. I was asked to attend because Australia, like the U.S., has become an environmentally at-risk country and has a steadily climbing dropout problem. The Greenway Experience ties these two problems together in an exciting win-win situation.

Finally, on Saturday, May 19th, 1990, we will be offering an opportunity for anyone interested, to experience the Greenway Experience. For more information, please note the related article on page 4 of this newsletter.

The First Annual Original Denver Duck Race



The Platte River Greenway Foundation will be one of the recipients, along with the Colorado Christian Home, of proceeds from a brand new event on the Platte River Greenway.

On Sunday afternoon at approximately 1:00 p.m., over 20,000 little yellow rubber ducks will be released from the 13th Ave. bridge into the South Platte River. Patterned after similar events in Arizona and Canada,

the ducks will float their way down the Greenway, through the Confluence Park boatchute and through the finish line just downstream from the 15th Street bridge. At least 15 prizes, including a Grand Prize Toyota Four Runner, will be awarded to winning ducks. Ducks can be obtained as a premium for a minimum donation of \$5.00.

This unique and fun-filled event is being presented by the Denver Active 20/30 Club, a non-profit organization of businessmen between the ages of 20 and 39, whose charter is to put on events and raise funds for organizations that benefit children in the Denver Metro area. Active 20/30's dedicated young men, together with its "100% philanthropic philosophy" (all net proceeds are turned over to the charities) make it an organization that is very unique.

The funds going to the Greenway Foundation will be used to support two of our 1990 efforts: Fishing is Fun improvements and the Greenway Experience (note related articles in this newsletter).

For more information on how to take part in this one of a kind experience contact the Colorado Christian Home ("Duck Headquarters") at 433-2541.

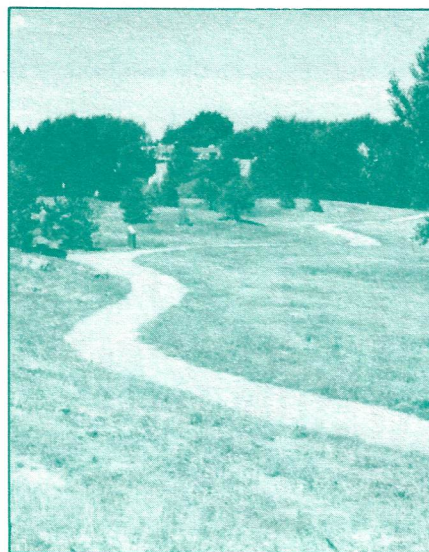
"Fishing is Fun" Improvements to be Constructed Along the Platte River Greenway

Merle D. Grimes

The long awaited "Fishing is Fun" improvements will get underway this summer.

The Greenway Foundation is developing wheelchair accessible ramps and fishing platforms that will be located at Overland Pond Educational Park. The ramp and platform have been strategically located on the River across from the Sanderson Gulch outfall. This area is already teaming with fish. Additional River improvements by the Urban Drainage and Flood Control District and the Greenway Foundation will make it even better.

In addition, a small dock will be installed on Overland Pond along with a wheelchair accessible path leading to



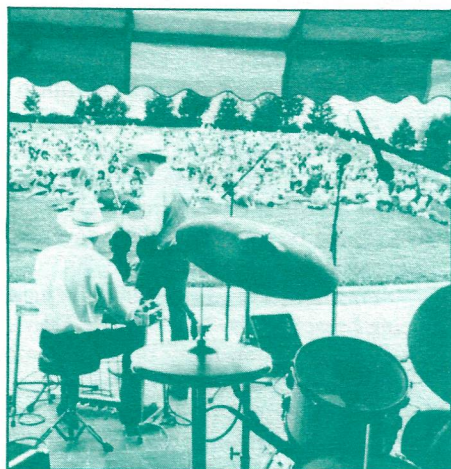
Overland Pond Educational Park, site of the upcoming Fishing is Fun improvements.

the pond. The Colorado Division of Wildlife will be stocking the pond periodically with warm water fish species.

Fishing education and enjoyment for urban youth is the main reason for the new amenity. The Boy Scouts of America are expected to be one of the primary users of the fishing improvements. Design and engineering is currently underway with construction to begin by June, 1990. The project is scheduled to be completed by August.

Funding for the project was made possible by the Colorado Division of Wildlife-Fishing is Fun program, the Denver Foundation, and the Greenway Foundation, with in-kind support from the Urban Drainage and Flood Control District, Boy Scouts of America, Trout Unlimited and Denver Parks and Recreation.

Concerts on the Green—1990



Music lovers of all ages enjoying an evening of music and fun at Confluence Park.

Concerts on the Green for 1990 are set and ready, promising another summer of first rate **FREE** musical entertainment at the birthplace of Denver - Confluence Park.

Once again, our theme for this summer's concerts will be "Jazz on the Green", and music lovers of all ages will enjoy the sounds of some of Denver's best jazz entertainment.

This year's series begins on Sunday, June 10th with a four hour jazz "marathon". We've scheduled the concert to coincide with two of our biggest and most enjoyable family events: the ever popular Great Relay Race (see page 5), and a brand new event taking place later in the same day, the 1st Annual Original Denver Duck Race (see page 3). From 11:00 a.m. to 1:00 p.m. enjoy the well known group **Hot Tomatoes**, followed from 1:00 p.m. to 3:00 p.m. by the upbeat sounds of **Breakaway**. Both groups are brought to you courtesy of the **Denver Active 20/30 Children's Foundation**, a local non-profit men's charitable organization.

On Wednesday evening, July 18th we are proud to announce the return of

the nationally known and recorded jazz combo **Images**. This concert will run from 6:30 to 8:30 p.m. and is brought to you by our longtime friends at **First Colorado Bank & Trust**.

Closing out this one of a kind series will be an opportunity to return to the days of dixieland jazz with the ever popular **Queen City Jazz Band**. This final concert will be held on Wednesday, August 22nd, again from 6:30 p.m. to 8:30 p.m. and is made possible by the **Mile High and Interstate Kennel Clubs**.

As always, **Pepsi Cola Bottling Company of Denver** will provide complimentary Pepsi products. A variety of food vendors will also be present for those who forget or choose not to bring a picnic supper.

For more information about how to take in these enjoyable **FREE** evenings of top rate music and fun, contact the Greenway Foundation offices.

CELEBRATE!

Tour a real ghost town! Pan for real gold!

(It's all right here in Denver on the Platte River Greenway and it's all **FREE**!)

Join the Greenway Experience river tours program in celebrating it's 20th year on the River. It began on the first Earth Day and has grown to international recognition. So bring a picnic and all your friends and relive a slice of Colorado history.

WHEN: Saturday-May 19, 1990

TIME: 10:00 a.m. to 2:00 p.m.

Ghost town tours every 15 minutes. Gold panning will be continuous.

(Yes, there is real gold in the Platte and we'll show you how to find it!)

(Also jewels and other treasures!)

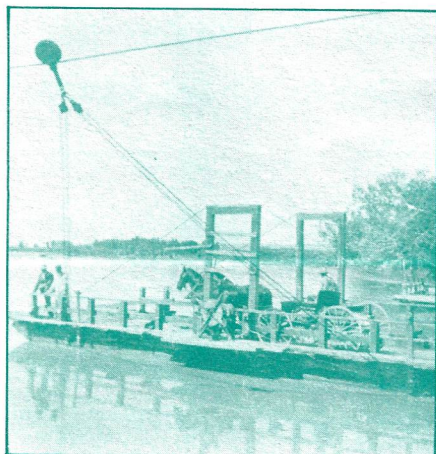
PLACE: Grant-Frontier Park, located one block south of Evans on the east bank of the South Platte River.



"Old Montana", the mascot and spokesman of the Greenway Experience.

Conveyances Changes—but the South Platte River Goes On and On—with the Great Relay Race for 1990

At the turn of the century the conveyances used on the "only River in Denver" included the ferry boat you see below. This commercial operation utilized the current of the River to traverse across the Platte in several locations. For 35 cents, you could ride on the ferry with your horse and/or your products and find yourself on the other bank in about 30 minutes. Using the access to the River roughly in the location of today's 19th Street viaduct, this means of transportation was very popular around the turn of the century. Other similar conveyances were in place along the River from Denver to Brighton.



You will not likely see this type of conveyance along the South Platte River today!! - but some of the 'old-timers' of Denver might see some of the new activities every bit as *unique* as this ferry boat of a hundred years ago. Kayaks, canoes, rafts, roller skates, bicycles and wheelchairs will be seen speeding along the banks of the River and in its waters in the 12th Annual



Great Relay Race to be conducted as part of **Riverfest Weekend on the South Platte River.**

June 9th

The Greater Denver Kayak Challenge will again challenge 50+ of the areas top boaters as they begin at Chatfield State Recreation Area next to the South Platte River and finish in the fastest time possible at Confluence Park.

June 10th

Teams of 9 or 10 persons will be traversing the entire front range from Littleton and Chatfield State Recreation Area on the South, to Barr Lake and Adams County on the North, from the Town of Parker on the East, to Morrison and Bear Creek Reservoir on the West - all making their way to Confluence by 12 noon on June 10th.

New additions on the race course this year include:

- Completion of the South Section all the way to Chatfield State Recreation area in Arapahoe County.

- The connector trail construction on the Cherry Creek Trail from Cherry Creek State Park, along Cherry Creek all the way to the Town of Parker.

Entrants in the event receive a designer t-shirt, free lunch and free music by **Hot Tomatoes**, a popular Denver jazz band. All festivities begin at 11 a.m. on Sunday, June 10th at Confluence Park.

Once again, the proceeds of the event go to the Greenway Foundation for the continuation of its programs along the various Greenway corridors.

Entry in the Race and request for further information can be obtained by filling out the following entry form and mailing it to:

The Mason Consulting Group
Great Relay Race Coordinators
2755 South Locust Street - #213
Denver, Colorado 80222

To receive an official application, fill in this form and return it to:
THE GREAT RELAY RACE & SUPERSTAR CHALLENGE
2755 S. Locust Street, #213, Denver, CO 80222

NAME _____

ADDRESS _____

CITY, STATE, ZIP _____

PHONE # _____

BOARD OF DIRECTORS

Joe Shoemaker
Chairman/Treasurer
Bill Avery
Vice Chairman

Larry Ambrose
Edna Doyle
Larry Elrod
Steve Metcalf
Jerome & Cynthia Nagel
Eldon O'Neal
Charles Roos

Jeff Shoemaker
Executive Director

Your Support Makes the Difference!

ANNUAL MEMBERSHIP

\$30.00 for you or a friend.

Included in the membership is a
Membership Card entitling you to:

- Notice of upcoming special events held along the Greenway during the year.
- All new members will receive a copy of our book "Returning the Platte to the People"
- All copies of the newsletter printed in the year you are a member.

COMMEMORATING MEMBER

For \$100.00, have a contribution made towards the Greenway Tree Fund in the name of a friend or loved one. (Also includes all privileges of an Annual Member).

CORPORATE MEMBER

\$250.00 includes a limited edition print by well known artist William Condit entitled "Seasons Along the Platte." All prints are signed and numbered by the artist. (Also includes all privileges of an Annual Member).



South Platte River Greenway Foundation Inc.
1666 South University Boulevard
Denver, Colorado 80210
(303) 698-1322

Non-Profit
U.S. Postage
PAID
Denver, Colorado
80202
Permit #3657