



GREENWAY CURRENT

Volume 20, Spring, 2001

Greenway Preservation Trust

Ensuring the Future of Our Urban Waterways
By Jeff Shoemaker, Executive Director



Photo courtesy of Bettinger Photography

After receiving the 2001 Friend Of The River Award, Mayor Wellington Webb and Denver's First Lady Wilma Webb enjoy a visit with Greenway Foundation Chairman Joe Shoemaker and his wife Penny.

Over the course of the last two years, the Greenway Foundation has successfully initiated a campaign to create a permanent endowment for the South Platte River and its tributaries. Better known as the **Greenway Preservation Trust**, this important effort is dedicated to the establishment of an ongoing source of funding to continue programs and projects that will help ensure that Denver's Greatest Natural Resource never again becomes the urban dump it was less than 30 years ago.

On November 8th, 2000, the 2nd Annual "FRIEND OF THE RIVER AWARD" Party was held as a benefit for the Trust. Over 300 guests in attendance witnessed the Award for 2000 being presented to Mayor Wellington Webb. In 1996, Mayor Webb announced "The Year of the River", dedicating over \$40 Million of funding to the further improvement of the South Platte, including the creation of Commons Park, the largest open space project in Denver

in the 20th century. Since its inception, the Mayor's South Platte River Initiative has brought about numerous park, open space and water related additions to the River corridor. In addition, the South Platte and Cherry Creek have been designated as official parks within the City and a new Park District has been created, staffed by professionals with specialized training and experience to handle the unique challenges of maintaining the River, its banks, parks, trails and natural areas. Thanks to the generosity of our guests and supporters, over \$30,000 was raised at the Party for the Greenway Preservation Trust.

Continued on the Next Page

“The Greenway Preservation Trust will help ensure that Denver’s Greatest Natural Resource will never again become the urban dump it was less than 30 years ago.”

Since its kickoff in February of 1999, the Greenway Preservation Trust has obtained over \$2 Million in contributions and pledges. The earnings from the Trust will fund what have been labeled as the four "E's": Education, Employment, Events and Enhancements. By establishing the Greenway Preservation Trust, the following efforts will be able to thrive for years to come:

Youth Education

Because the Foundation realizes the importance of educating today's young people about the significance of the South Platte River to the past and future of our City, a unique indoor/outdoor learning experience known as S.P.R.E.E. (South Platte River Environmental Education) allows thousands of public and private school students to integrate the River into a variety of educational activities, both within the classroom as well as through on-site projects. (refer to page 4 for additional information.)

Youth Employment

Each summer, the Foundation employs Denver area youth to serve as River Rangers and Punt the Creek crew members. The crew of Punt the Creek provide relaxing boating excursions along Cherry Creek in Lower Downtown Denver, while offering an entertaining history of Denver's birthplace. The River Rangers, hired in partnership with the Denver Metro Chamber of Commerce's "Youth at Work" program provide additional maintenance to the various urban waterway trails, assist at all Foundation special events and partner with other similar youth crews to further landscape the various parks and open space areas along the River and its tributaries. (refer to page 6 for additional information.)

Special Events

One of our most enjoyable endeavors is to produce various special events, all of which are free to the public, and designed to encourage further awareness, usage and protection of the River and its tributaries. Confluence Concerts, held every Thursday evening in July, provide first class musical performances at Confluence Park. Celebrations such as the River Rendezvous and RiverFest have taken place along the various Riverfront parks, created to entertain adults and young people, with an emphasis on recognizing the historical and cultural significance of the South Platte to the creation and establishment of Denver. NIMBY Fest, (which stands for "Not In My Back Yard") is our end of summer volunteer based cleanup of the River and its tributaries. Each September, this multi-jurisdictional cooperative venture results in several tons of trash and debris being removed from over 25 miles of the South Platte through Arapahoe County, Denver and Adams County. (refer to page 7 for additional information.)

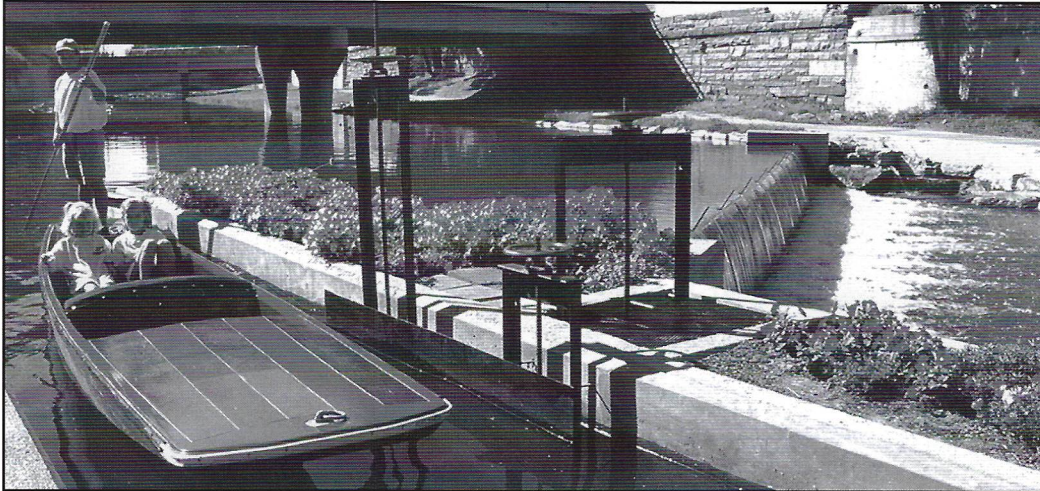
Added Enhancements

Continual investment in the further preservation and improvement of the River corridor is critical to securing its future. Added natural areas, improved recreational amenities and increased landscaping projects are just a few of the enhancements that will continue to be put in place over the years. By combining a portion of the earnings from the Trust with matching public funds, the beauty and environmental quality of the River will be assured. (refer to page 18 for additional information.)

The South Platte River is truly Denver's legacy. The River and its banks served as the host for our City's first permanent settlements. Once a source of pride, the River became a wasteland of refuse and pollution, until the determined efforts of the Greenway Foundation initiated the rebirth of Denver's "Only River in Town". With the incredible added commitment from the City over the last six years, the South Platte is, once again, one of Denver's cultural jewels. By investing in the Greenway Preservation Trust, this revival will continue for generations to come.

Punt The Creek

A Fun Way to Learn About Denver's History
By Jolon Clark, Crew Manager



Warren Astler, "Punt The Creek" Concession Manager, guides two young passengers through one of the only locks in Colorado.

The first time I heard that there were boat tours on Cherry Creek, I didn't believe it. I had visions of tour guides on inner tubes barely floating in the shallow water. What I found, however, were flat-bottomed, gondola style boats gracefully gliding along through an ingenious system of dams and locks. I was amazed, and I immediately wanted to be a tour guide.

This summer will be my fifth year at Punt the Creek, and I can't imagine having any other summer job. Located a half block off of Larimer Square in the heart of Downtown Denver, Punt the Creek offers an experience like no other in Colorado.

This is no ordinary boat ride either. It is a journey back in time. Led by a tour guide standing on the end of the boat with a fifteen-foot pole, the channel is transformed once again into the heart of a struggling western town. As the boat travels along the banks where Denver's first residents settled, a history of gold rush, fire, and political shenanigans unfolds.

On a cool summer night, there is a beautiful view of the sun setting over the majestic Rocky Mountains as the boat travels downstream as well as the twinkle of lights from Denver's skyline on the way back upstream.

Although some other cities feature boat tours, none are quite like this. The boats, called punts, are an English version of the Italian gondola. These punts were shipped all the way from Cambridge, England, and they are the only punts in use in the United States. The lock system is also one of a kind. Designed specifically for Punt the Creek, the locks are the only boat locks in all of Colorado.

The Greenway Foundation has transformed a polluted and abandoned waterway into one of Denver's finest treasures. With a mix of history, relaxation, and fun, gliding down the Cherry Creek in a punt is a once in a lifetime experience.

PUNT THE CREEK



Complimentary
Ticket

Coupon Valid for
One **Individual** Ride
(Tip Not Included)

Ticket Office: Creekfront Plaza
Larimer & Speer

303.893.0750

What is S.P.R.E.E?

And What is all the Excitement?

By Carl Crookham,
S.P.R.E.E. Program Coordinator

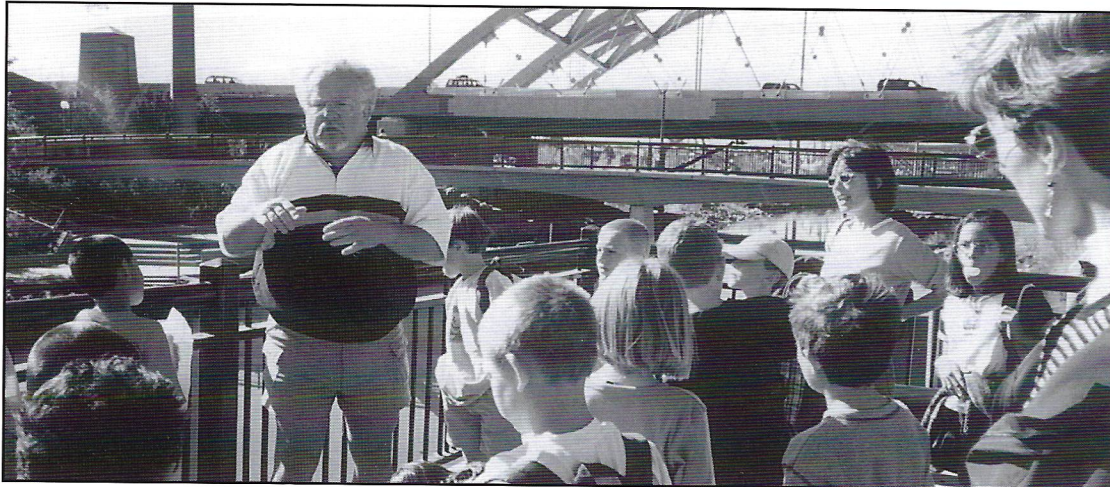


Photo courtesy of Carl Crookham

Carl Crookham, S.P.R.E.E. coordinator educates and entertains a group of elementary students as they learn about the birthplace of Denver at Confluence Park.

When you find yourself talking about the South Platte River in Denver, the topics usually center around such things as water quality, flooding and recreational use. It is important to add that the South Platte as a "living classroom" is a concept that is rapidly capturing the attention of Denver's education community.

River education has been available for over twenty five years in Denver, with the Greenway Foundation as one of its key sponsors. Since 1975, over 65,000 students and parents have participated in numerous activities with the South Platte as the focal point. With the recent support of Mayor Wellington Webb and his South Platte River Commission, educational opportunities have dramatically increased.

"S.P.R.E.E." (South Platte River Environmental Education) Schools are the newest addition to the variety of programs associated with connecting the River to education and vice-versa. A S.P.R.E.E. school has chosen to use the South Platte as a motivational and educational part of its total curriculum. McKinley-Thatcher Elementary School is a perfect example. South Platte River excitement flows throughout the entire school. In addition to the River displays that appear in the school's lobby, the halls are lined with various River activities, the largest of which features a giant wall mural of the South Platte.

When classes take field trips to different sites along the River, they take pictures of their adventures. The best pictures, with captions written by the kids, are placed on the mural and grouped at the site that was visited.

The classrooms also have River displays and the teachers continually look for ways to incorporate the South Platte into their lessons. These lessons include activities such as:

- **HISTORY** - Study the gold rush in class with books, lectures, videos and discussions and then bring it to life with a day at Grant-Frontier Park. Tour the ghost town, operate the mine and finish the excursion by gold panning right where it actually happened.
- **MATH** - After getting basic math skills practiced in the classroom, try applying them to a real River situation. Take the necessary measurements in the South Platte, and work them through the formula for water flow. Once you have the answer, check it on the spot with a phone call to the 24 Hour River flow line.
- **ART** - If you're working with clay, how about a field trip to the Robinson Brick Co. on the banks of the River? Learn how Colorado clay built our State. Create watercolor scenes of the River or the ghost town at Grant-Frontier Park. After panning for gold, where you can also find garnets, magnetite, clear and snow white quartz, and mica, you can take these "treasures" and turn them into jewelry.

Continued on the Next Page



Photo courtesy of Carl Crookham

Elementary students learn first hand about the challenges of gold panning under the supervision of one of the S.P.R.E.E. high school guides.

School hosted an between 1-3 p.m. the South Platte curriculum, and example of a top a River running

"Our field trip to Confluence Park was very cool. We learned about plants and birds that live near the River. One of the birds is the blue heron. It is a very interesting bird. I hope someday to canoe down the South Platte River." - Seth Klusmire - 3rd Grade Student - McKinley-Thatcher

• The following quotes are from various educators, parents and students that have experienced the fun of having the South Platte River intertwined with the school day:

"During this past summer, our faculty took classes to prepare them for teaching this environmental unit on the South Platte River. The learning experiences of the students while on the River made related written materials relevant and applicable. The lessons involved our total curriculum (Science, Geography, Social Studies, Language, Reading, Math, Art, P.E. and Music). Involving the South Platte River into our curriculum has greatly increased the students' desire to learn and use their literary skills." - James W. Richardson, Principal - McKinley-Thatcher Elementary School.

"An excursion with Carl Crookham to the South Platte is a combination vacation trip and journey back in time. He has wonderful tales about early Denver and Colorado, and he provides hands-on experience for the children to learn about Native Americans and early settlers as well as a variety of fun experiences including panning for gold (obviously, the highlight!). Carl fills the entire trip with history and fun." - Judy Card - 4th Grade Teacher - Gust Elementary School

The S.P.R.E.E. program is made possible through the support of the City and County of Denver in partnership with Denver Public Schools and the Greenway Foundation. This fun and unique educational endeavor will help ensure that thousands of young people will continue to learn the importance of the South Platte River to the past, present and future of our community.

"The S.P.R.E.E. programs, led by Carl Crookham, are always our favorite field trips of the year. The trips include exciting information, games and projects and provide new opportunities to explore the beauty of the River, our City and our State." - Dori Bornt - 4th Grade Teacher - Fairview Elementary School



Photo courtesy of Carl Crookham

D.P.S. Elementary students learn first hand about the challenges of gold panning under the supervision of one of the S.P.R.E.E. high school guides.

McKinley-Thatcher Elementary School hosted an open house on Friday, May 18th, between 1-3 p.m. to display all the ways in which the South Platte has been incorporated into their curriculum, and confirming that they are a shining example of a top notch elementary school that has a River running through it.

• The following quotes are from various educators, parents and students that have experienced the fun of having the South Platte River intertwined with the school day:

"During this past summer, our faculty took classes to prepare them for teaching this environmental unit on the South Platte River. The learning experiences of the students while on the River made related written materials relevant and applicable. The lessons involved our total curriculum (Science, Geography, Social Studies, Language, Reading, Math, Art, P.E. and Music). Involving the South Platte River into our curriculum has greatly increased the students' desire to learn and use their literary skills." - James W. Richardson, Principal - McKinley-Thatcher Elementary School.

"The S.P.R.E.E. programs, led by Carl Crookham, are always our favorite field trips of the year. The trips include exciting information, games and projects and provide new opportunities to explore the beauty of the River, our City and our State." - Dori Bornt - 4th Grade Teacher - Fairview Elementary School

"Our field trip to Confluence Park was very cool. We learned about plants and birds that live near the River. One of the birds is the blue heron. It is a very interesting bird. I hope someday to canoe down the South Platte River." - Seth Klusmire - 3rd Grade Student - McKinley-Thatcher

"An excursion with Carl Crookham to the South Platte is a combination vacation trip and journey back in time. He has wonderful tales about early Denver and Colorado, and he provides hands-on experience for the children to learn about Native Americans and early settlers as well as a variety of fun experiences including panning for gold (obviously, the highlight!). Carl fills the entire trip with history and fun." - Judy Card - 4th Grade Teacher - Gust Elementary School

The S.P.R.E.E. program is made possible through the support of the City and County of Denver in partnership with Denver Public Schools and the Greenway Foundation. This fun and unique educational endeavor will help ensure that thousands of young people will continue to learn the importance of the South Platte River to the past, present and future of our community.

Greenway River Rangers

Providing Care and Enhancement for our Urban Waterways

By. Randy Erb, Crew Supervisor



Photo courtesy of Kyle Ecton

This past summer, the Greenway River Rangers planted several hundred flowers, shrubs, and groundcover material along the South Platte River and Cherry Creek.

Though community service is often deemed to be a “chore”, cleaning up our community and increasing the public’s enjoyment of our City is one of the most rewarding occupations available.

Each summer, the Greenway Foundation hires a number of young people to perform this service and I am among them. I began working for the Foundation as a River Ranger during the summer of 1998, and I am looking forward to my fourth year with the program this year.

Throughout my work experience as a River Ranger, I have climbed from being a Ranger “rookie” to serving this year as Crew Supervisor. I am very excited about the upcoming season that will, I am sure, be filled with new challenges as well as those we encounter every summer. Being outdoors, getting great exercise, working with enjoyable crew members and helping my community are just some of the characteristics about this job that have kept me coming back. When I first joined the team, I was astounded that I was getting paid to be in such a great work environment.

One might be quick to identify sweeping sidewalks and cleaning trash as a plebian chore. However, the River Rangers accomplish this part of their job with such class that they encourage the surrounding population to become stewards of the Greenway as well. Furthermore, our crew doesn’t fill their days solely with the perpetual job of maintenance. In addition, we assist at the Foundation’s various special events including Riverfest, Confluence Concerts, and the S.P.R.E.E. Outdoor Excursions.

I take great pride in knowing that my crew and I are assisting these very popular events, all of which take place along the most beautiful area of Lower Downtown Denver.

When riding along the trails each day, the River Rangers display professionalism and friendliness. We pride ourselves on how well we do our job, not just getting the job done. Our motivation comes from the desire to create a better place in which to live for the thousands of daily Greenway users as well as the surrounding LoDo residents. Through this work experience, I am improving my character and educating myself to be more selfless and friendly each and every day. This is truly a job that is hard to beat!

As the Crew Supervisor for the 2001 season, it is my responsibility to motivate my team to perform at their highest ability. As last year’s Asst. Supervisor, I learned several managerial skills that will allow me to serve as a strong example for my team in terms of work ethic and attitude.

I am very optimistic that the 2001 River Ranger crew will be the best yet, and that we will accomplish a great deal over the course of the summer.

Special Events 2000-2001

By Doug Ellis, Associate Director



Photo courtesy of Doug Ellis

Confluence Park provided a relaxing venue for our Thursday summer evening concert series last July.

Last summer the Greenway Foundation kicked off the new millennium with its signature music series, "Confluence Concerts" in July followed by "Riverfest" a few weeks later, and "NIMBYFest" in September.

Confluence Concerts

The sunset, skyline, sights and sounds at the confluence of Cherry Creek and the South Platte River are the main attractions of Confluence Concerts, an increasingly popular and FREE summer concert series held Thursdays in July at Confluence Park, across from the new REI flagship store.

Last year's entertainers included Denver's first lady of jazz, Hazel Miller, Phat Daddy, the Fab Four and a special appearance by "Elvis" during Doowop Nite. The series was promoted by radio stations KOOL105, MIX100 and Jammin' 92.5 (now Infinity Broadcasting), The Denver Post and sponsors Vectra Bank, Anheuser Busch and Phoenix Property. Thanks to support of the Mayor's South Platte River Commission and our corporate contributors, these concerts are free to the public.

This year, the Foundation will host "2001 - A Musical Odyssey" featuring the following entertainers:

- | | |
|---------|-------------------------------|
| July 5 | Jakarta (Jammin 92.5) |
| July 12 | Liquid Rythums (MIX100.3) |
| July 19 | Kool Kats (KOOL105) |
| July 26 | Special guest to be announced |

Plan on joining us at the confluence for a fun evening of entertainment after work, before a Rockies game, with a punt ride or after dinner at Larimer Square. Food and beverages will be available (no coolers allowed into the concerts), with concession proceeds benefiting the Greenway Foundation.

We salute our sponsors for their generous support:

- The Mayor's South Platte River Commission
- Anheuser Busch
- Kentwood City Properties
- Heritage Bank
- Commons Park West

Continued on the Next Page



Photo courtesy of Doug Ellis

Street entertainment was raised to new heights during RiverFest 2000, held this past August along several parks within the Central Platte Valley .

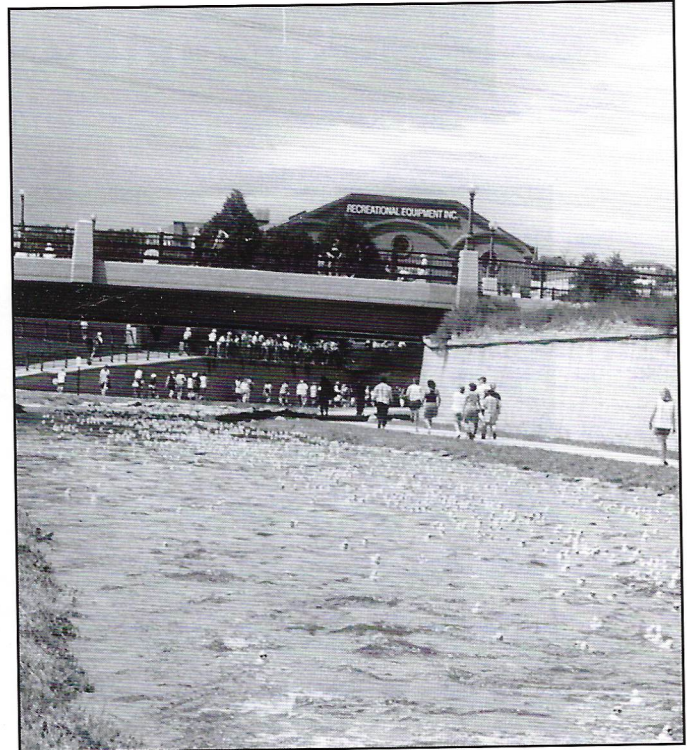


Photo courtesy of Doug Ellis

Thousands of little yellow rubber ducks make their way downstream along Cherry Creek in Lower Downtown Denver during RiverFest's Denver Duck Derby.

Riverfest

On August 26, 2000, the Greenway Foundation, in cooperation with the Mayor's South Platte River Commission, celebrated the addition of Commons Park to the South Platte River Greenway with a fun, family festival known as "Riverfest". The Foundation also teamed up with Planit Events to host the "Denver Duck Derby" on Cherry Creek. The event was sponsored on KOSI 101 radio and supported by the Lower Downtown community. Denver's favorite jazz band, Dotsero was the headliner. Winning "ducks" shared a host of prizes including the use of a 2000 VW Beetle for a year, a trip to San Diego and Sea World and a \$500 shopping spree at Virgin Megastore. Denver Pavilions, United Artist Theaters, Chipoltes Mexican Grill, Zulanas Distributing and Ramada Vacation Suites were also major contributors.

A portion of every duck sold ("adopted") went to the Greenway Preservation Trust to establish a permanent fund for the foundation's youth programs and cultural events. Planit facilitated over 7,000 duck sales through various downtown locations and at KOSI radio remotes. The event made a splash in the Rocky Mountain News (see photo) and 9NEWS - KUSA.

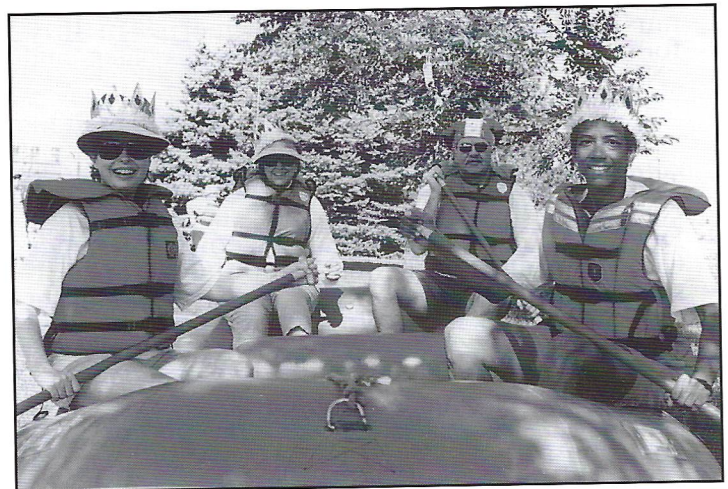


Photo courtesy of Greg Pratt

Denver City Council members, Kathleen MacKenzie, Ramona Martinez Ed Thomas, and Happy Haines get ready to make a splash at the Great South Platte River Relay, a part of RiverFest 2000.

Details regarding Riverfest – 2001 which will be held on Saturday, August 11, 2001 are still being finalized. For up to date information, check out our website at www.greenwayfoundation.org.

Continued on the Next Page

NIMBYFest

On Saturday, September 30, 2000, hundreds of volunteers converged at designated assembly points along the South Platte River to pitch in and clean up a 25-mile stretch of Riverbank. Over ten tons of garbage were removed and collected by participants and removed by contractors from Urban Drainage and Flood Control District. Members of the Rocky Mountain Canoe Club "dredged" the River, while teams from Tetra Tech, Camp Dresser & McKee and other groups cleaned the banks near downtown. Thanks again to Armadillo Restaurant, Zangs, the Old Spaghetti Factory, Pudge Bros. Pizza and Odwalla for the food and beverages for the post-event buffet lunch. This event was made possible through the support of the Mayor's South Platte River Commission, Denver Water and the E.P.A.

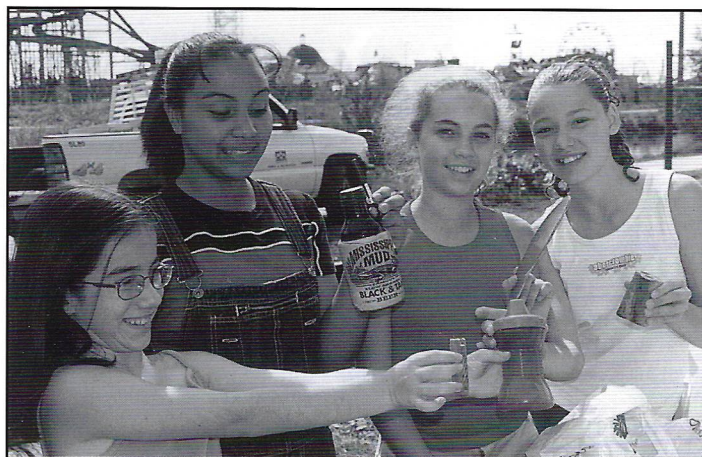


Photo courtesy of Doug Ellis

These girls are happy to show their spirit and their findings during the 9th Annual South Platte River Cleanup (NIMBYFest 2000) last September.



Photo courtesy of Doug Ellis

One of many pickup truckloads bearing trash evacuated by volunteers along a stretch of the South Platte River during NIMBYFest 2000.

The Greenway Foundations is proud to present NIMBYFest, short for "Not-In-My BackYard," again in 2001. The event is a collaboration with the parks departments of Denver, South Suburban and Adams County, the cities of Brighton, Commerce City and Englewood and numerous sponsoring organizations, including the Mayor's South Platte River Commission, Denver Water, Tetra Tech, EPA, Metro Wastewater, the Rocky Mountain Canoe Club, the EPA, BFI, River Reach Youth Initiative and Urban Drainage & Flood Control District.

This year's NIMBYfest will be held Saturday, September 29, 2001. Volunteers will assemble at the following locations:

•Boaters – 7:30 a.m. at Fishback Landing (unless previously assigned).

•All others – 8:00 a.m.

•Adams County - Metro Wastewater Plant, (6450 York Street; Kathy Spinella 637-8004).

•Denver - Fishback Landing Park (next to Colorado's Ocean Journey; Joan Wilson 964-1006).

•South Suburban (Littleton) - Open area, NW corner of Sante Fe and W. Bowles across from Echostar; Jean Flynn 798-5131).

To pre-register you/your group can print the registration form off our website (www.greenwayfoundation.org) and fax it to the jurisdiction where you want to volunteer. Adams Co. Parks (including Brighton, Commerce City) FAX 303-637-8015; Denver Parks, FAX 303-964-1048; South Suburban Parks (including Englewood), FAX 303-798-3030. Forms will also be available at metro area REI locations and participating parks department.

Sponsors to date for NimbyFest 2001 include 1st Bank, the Mayor's South Platte River Commission and Denver Water.

The Greenway Foundation is proud to host these special events with the help from our many partners and the local community. The Foundation continues to host these events in support of its mission to provide cultural, educational and recreational programs for the people of Metro Denver. We hope to see you down at the River this summer.

For more information and/or updates about upcoming events, see our website at www.greenwayfoundation.org.

Year Two On The River

By Bar Chadwick
Director, South Platte River Initiative
Mayor's South Platte River Commission

It's been a year since I wrote to you about my exploits along the River. It's actually really hard to believe a year has gone by, especially when looking at all we've accomplished, and all that is yet to be done. Where to start.....

The Mayor's South Platte River Commission finished the Long Range Management Framework plan for the River corridor, and should be publicly recognized for their hard work, perseverance and dedication to the South Platte. It was not an easy task, to coordinate and blend all of the various uses and users along the River into one guiding document which will ensure the restoration of the River well into the future. Along with the plan recommendations, the Commission recommended a new structure for the Initiative, which the Mayor is considering as an Executive Order. The Order broadens the breadth and scope of the Commission and begins to tie in directly to our neighbors to the north and south, uniting all of our desires to see the rebirth of the South Platte River continue.

Commons Park has been substantially completed and was the location for the Mayor's State of the City address. The Denver Skate Park ground breaking occurred, Northside Park was dedicated, Centennial Flower Gardens broke ground, and the first of two U.S. Army Corp of Engineers (USACE) projects began. That's right, oh ye of little faith, Denver has developed an excellent and healthy relationship with USACE, which we plan to build upon to see the final mile of the River through Denver restored and removed from the flood plain. Enormous thanks goes to our Congressional delegation who provided a congressional letter of support which enabled the first phase of the project, the Colfax Reach, to receive a financial earmark, or commitment, in the Water and Energy Act of 2000.

The Colfax Reach project provides for the riparian restoration and deepening of the channel from approximately I-25 upstream to Lakewood Gulch, which is just downstream from the Zuni Power Plant. This section of the project calls for the restoration of native plants, the pulling back of the river's banks and the widening of the existing channel. Through a competitive bid process, the USACE has contracted with Tierdael Construction for this project. The project will take a total of 18 months to complete, although work will cease during the high flow season. The official groundbreaking took place on March 16, 2001, and was attended by no less than two USACE Generals, a Colonel and a couple of Majors!

Mayor Wellington E. Webb, Congressional Members Diane DeGette and Mark Udall, and Denver City Council President Ramona Martinez were also in attendance. It was a truly exciting day for those of us who have been working on this project. Cudos to an unprecedented effort by the Omaha, NE office, especially Patrick Addison, who had this pro-



Photo courtesy of Bob Gunkelman, USACE, Omaha District

At the recent groundbreaking ceremony, Mayor Wellington Webb receives an original painting from Major General Hans Van Winkle, depicting the improved Colfax reach section of the River.

ject underway within 12 months!

The next project we are asking USACE to help us with is the removal of Excel Energy's Zuni Power Plant fabric dam and the widening and restoration of the River from the power plant at 13th Ave. upstream through the Sun Valley neighborhood to 8th ave. This is an extensive and extremely complex project due to numerous power poles that will have to be relocated as well as new circulation technology for the power plant to still receive the necessary River water for energy, without having to damn the River to receive that water. Again, the Denver team has been visiting with our Congressional delegates to ask for Congressional support for this request. At the March 16, 2001 ground breaking Congresswoman DeGette and Congressman Udall reaffirmed their commitment for the Denver County Reach Project.

It is an exciting time for the River and the Mayor's Legacy. As Mayor Webb nears the end of his final term, so do the major projects and restoration that he envisioned for the corridor. As the Initiative staff and Commission continue their work, it is only a matter of time that all can rest and say "job well done", and again honor the Mayor for his vision and perseverance for a healthy and vibrant South Platte River.

Denver Pride!

By **Melissa Kolwaite**,
Program Administrator
South Platte River District



Photo courtesy of Roger Hernandez

*South Platte River District
Tony Madrid, Lestey Roper, Jill Coffman, David Maes, and John Garcia
Not Pictured Gerald Alarcon*

As the result of tremendous foresight, the City and County of Denver is now home to over 300 parks and parkways. Denver's parks and open space add so much to this great city, and have established Denver's park system as one of the finest in the nation. Thanks to the vision of such men as former Mayor McNichols, Joe Shoemaker, and our current mayor, Mayor Wellington E. Webb, the redevelopment of the South Platte River corridor is counted among Denver's great achievements.

In an effort to continue the restoration process and needed maintenance of Denver's foremost regional asset, the Department of Parks and Recreation, in conjunction with the Mayor's South Platte River Commission created the South Platte River Park Maintenance District during the summer of 1999. The District runs the 10.5 miles of River corridor within the City and County of Denver, and is home to 16 parks and several miles of adjacent naturalized riverbank. Although now unified, the maintenance of this area was once the responsibility of four different Park Districts. The creation of a specific Maintenance District has provided the River corridor with the needed daily attention, as well as institutionalized long term care.

The South Platte District is approximately 300 acres in totality. Roughly 100 acres of this land is typical developed bluegrass parkland. The remaining 200 acres include a tapestry of native grasses, trees, shrubs, wildflowers, and a naturalized River corridor that supports a diverse wildlife population. In addition, the South Platte River corridor is a focal point for citizen use, volunteer activities, and events. Last year alone, the District hosted over 30 volunteer projects, 5 multi-week youth work programs, and close to 20 events.

Who is charged with the care of this unique area and its activities? The South Platte River park district staff: Lesley Roper is the Field Superintendent, Melissa Kolwaite the Program Administrator, Tony Madrid the Operations Supervisor, David Maes and John Garcia are Maintenance Technicians, and Gerard Alarcon is the district's Horticulturist. A Utility Worker, as well as 7 seasonal employees will soon be hired as the busy summer months near. Lastly, in an effort to complete our staffing needs, 5 new full time employees will be hired in June 2001. These particular staff members will primarily assist with the maintenance of our newest parks, Commons, Northside, and Skatepark.

We have a big job ahead of us as we continue to develop, organize and establish this new, but vitally important Park District. It is this challenge however that we, the South Platte River Park District staff, gladly face.

South Platte River Designated Important Bird Area

By Casey Davenhill
Co-Chair, South Platte Commission

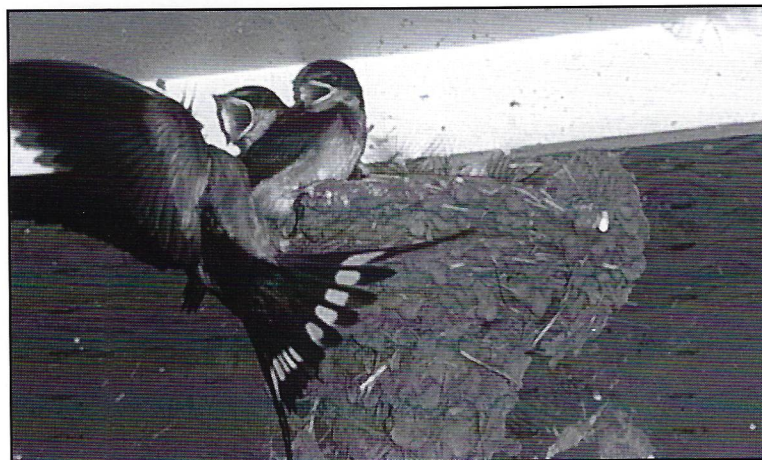


Photo courtesy of The Urban Wildlife Photo Club

*A Barn Swallow shown feeding bugs
(probably mosquitos) to its babies.*

When Jeff asked me if I would write a piece for the Greenway Current I said "sure." I mean, I'm delighted to be asked (there's one born every minute) and I've enjoyed my South Platte River experiences so much that I hope everyone will have an opportunity to become more familiar with "The Only River in Town."

A lot is written about the economic renaissance that has been the recent happy result of the South Platte River Initiative undertaken by Mayor Webb and wholeheartedly supported by the Greenway Foundation. Many new people have been introduced to the River and we hope that means better care and increased stewardship for the South Platte. So far, two major maintenance achievements have been brought about. The Denver Parks Department has re-established a Maintenance District for the South Platte and services have improved dramatically. The Natural Areas Program was adopted by City Council in 1997 as a mechanism for designating and managing natural areas. Denver can now officially protect such areas in ways that enhance natural processes as well as people's enjoyment of them. To be good stewards we need to know more about the River that is this area's premier natural resource.

On some long, summer afternoon you may ask yourself: "What am I doing here?" Now, that's not "What am I **doing** here?" but "What am I doing **here**?" Some say it was the promise of gold that brought white men from Lawrence, Kansas in 1858, but there was never enough gold in this stretch of the South Platte to justify the hordes that followed. Anyway, the area was already well traveled and inhabited by the Arapaho who knew the real value of

the South Platte was its clear, fresh water and the abundant wildlife it supported. They knew that fresh water was more precious than gold.

Well, no one would call the South Platte's water fresh today as it was then, that much is clear, and the wildlife that remains is struggling, but where else can they go? Although today's human inhabitants have numerous recreational and survival options, for other of nature's creatures, the South Platte is the only game in town. If you care to learn the habits of wild creatures, and if you are very clever and very lucky, you may catch a glimpse of some of the more charismatic wildlife: a red fox, a busy beaver, even hawks and pelicans. Ducks adore the South Platte, and in January this is the duck equivalent of the Mexican Riviera. During the cold winter months, the River can be the only source of unfrozen water for urban wildlife, and moving water stays fresher and cleaner than standing water during the heat of summer. The South Platte River is the lifeline for wildlife through Denver.

The Audubon Society has recently designated the South Platte River through Denver as an "Important Bird Area." This is no news to the birds, but they are no doubt pleased with Audubon just the same. With this recognition, the Audubon Society hopes to encourage more of us, the human element, to help maintain a healthy habitat for migratory birds and other animals. But here's the real deal: a healthy, balanced habitat for birds and other wildlife is also healthy and graceful for us!

Continued on the Next Page



Photo courtesy of The Urban Wildlife Photo Club

Barn Swallows chillin' in their nests.

These are the elements to keep in mind: An animal's needs are fulfilled within its habitat. What are these needs? "An individual must find food, maintain its internal water balance and avoid predators and unfavorable conditions. The features which meet these basic needs—space, shelter, food and water—are the foundation of wildlife habitat." A WILDLIFE CONSERVATION MANUAL Utah State University, 1993.

Those sound like my needs, yours, too, probably. For us, our desires go way beyond our needs. We enjoy options and some of us even (gasp) over-consume, but most non-domesticated animals live on the verge of starvation. Even minor stresses like being chased by a dog or being harassed or startled by humans can be life or death to a duck!

This Spring, swallows will return to Denver to raise their young. You can see Barn Swallows with their distinctive "swallow" tails, Brown Cliff Swallows and beautiful Violet-Green Swallows. They will build their nests on bridge underpinnings and may be attracted to some of the new buildings that are so close to the River. These are brilliant little overachievers who spend endless hours gobbling up mosquitoes. It takes a lot of mosquitoes to feed a hungry swallow family but that's what swallows do best. In fact, if you get a close look, you will see that their heads are mostly mouth.

Swallows are most beneficial creatures and they are federally protected migratory birds. It is illegal to disturb their nests. That is the reason for the tacky orange netting you may have seen attached to the Speer Boulevard bridge construction last spring.

Having said all this: Swallows are bright, beneficial, hard-working, clown-faced mosquito eaters that will build a nest of mud and swallow spit in any hospitable location (did I mention that they EAT MOSQUITOS). They have some habits you may experience should you be so lucky as to become a swallow landlord. Given the way digestive systems work, you can imagine how difficult it is to keep a nest full of baby Swallows clean. In fact, they kind of poop all over the place. So if you have recently set up housekeeping in one of the newer

cliff-like structures right smack on the River, you will want to carefully consider your patio furniture placement. Remember, it is illegal to disturb swallows, or any other migratory bird's nest. **BIG BIRD IS WATCHING.**

Should you have a swallow nest in your dormer, please be patient. They won't stay for long – swallows fledge in just three weeks – and they're cute, harmless and helpful. A pretty good houseguest.

Pigeons are another story. They do not need anyone's protection and they love what we leave. They poop too and they don't go away (non-migratory) not particularly good houseguests. Some people poison pigeons, but such indiscriminate means may harm other birds as well. Techniques such as removing access to perching places or putting down sticky stuff will discourage pigeon roosting. Keeping dumpsters closed, trash cans covered and food remnants picked up will make your habitat a little less hospitable to pigeons and their wingless cohorts, the rats.

In some countries where pigeons are pursued as a tasty treat, the pigeon population problem is addressed in another way. Folks lay out grain soaked in the local brew and the pigeon party begins. Before long the pigeons lose their inhibitions and -- WHOMP – pigeon fricasse.

Well, that's the natural history lesson for today folks. I wonder if Jeff will let me share some recipes with you all in the next issue?

The Greenway Foundation is excited to witness the return of residential living to the banks of the South Platte River. The following articles reflect some of the remarkable development that is currently in place or under construction.

- Editor -

The Central Park of Denver

Riverfront Park to be the Central Platte Valley's "Little Jewel"

By: East West Partners



Photo courtesy of East West Partners

Riverfront Park, Denver's first "urban resort neighborhood", is nearing completion in the Central Platte Valley.

City life or suburban tranquility? People who love both lifestyles have always had to choose one or the other in Denver. If you bought a home near downtown, you could walk to the cafes, enjoy the night life and frequent sports events. But it would be hard not to miss the wide open spaces and meandering bike paths of the suburbs.

Long-time Denver residents even say they have switched off between the two, trying to get the best of both worlds in alternating doses.

Until now, Denver has lacked a cosmopolitan neighborhood that blends open space and city life, like New York's Central Park- upscale, modern homes surrounded by parks, fine shops and entertainment venues. That is why Riverfront Park will be so unusual and so welcome in Denver.

Near Denver's Historic Lower Downtown district, Riverfront Park will offer condominium and loft buildings with upscale residences above and boutiques, restaurants, and cafes at ground level. The land, comprising of 25 acres in the Central Platte Valley, is a little jewel on the green belt of the South Platte River, bordered by 20th and 15th Streets to the north and south and to the west by the new Commons Park. Surrounding Riverfront Park are Coors Field, the Pepsi Center, Six Flags/Elitch Gardens, Colorado's Ocean Journey and the Children's Museum.

The developers of Riverfront Park are Harry Frampton and Mark Smith of East West Partners, best known for the Hyatt Regency Hotel in Beaver Creek and a number of high-end condominiums in the mountains.

"Think of this as an urban resort," Smith states. "You have all your sporting events right here, plus shopping and restaurants, and right in the middle of it are beautiful homes along a river front park. It's a village in the heart of the city."

Initial development plans are for two buildings. They include a 13-story tower condominium building and a seven-floor loft building. On the interior, the Tower Condominiums will resemble traditional homes as opposed to open lofts. Floor plans will offer features such as dining rooms, libraries and huge closets. Detailing will include traditional moldings and upscale cabinetry and flooring. The largest will be more than 5,000 square feet.

The lofts will be unique to Denver in that the interior design firm is bringing materials never used before in the Denver loft market. The standard features are far superior to what has been offered up to now. Plans for the buildings' exterior calls for a classic, neo-traditional urban look with a Colorado flair, drawing on Colorado masonry styles.

Riverfront Park will be the Central Platte Valley's Little Jewel- so unusual yet so welcome in Denver.

•For more information about Riverfront Park residences, call 303-623-1500.

The Central Platte Valley's First New Residences

By Jim Theye,
Managing Broker -
Kentwood City Properties



Photo courtesy of Jim Theye

The expansion of the Flour Mill Lofts, adjacent to Cuernavaca Park, will be completed later this year.

The Flour Mill Lofts stand majestically overlooking the City of Cuernavaca Park and the South Platte River. The former Pride of the Rockies Flour Mill, the original building was the project that no developer wanted. It was an urban eyesore covered with graffiti. Built in 1906, the mill expanded over time and was rebuilt after several fires. But by the 1970s, the mill was abandoned and became a "hobo hotel" for the city's vagrants and runaways.

Then in the mid 1990s, Dana Crawford arrived as the visionary and pioneer for the renovation of the Flour Mill Lofts. The monumental cast-in-place concrete structure was renovated to house 14 of the hippest lofts in Denver's thriving Central Platte Valley. The round silos in the original (phase 1) flour mill building are now bedrooms, offices, and home theaters. Architecturally unique, this project has won national and international recognition and is on the National Register of Historic Places.

What a hard act to follow! Construction on the Phase 2 building began in March 2000 and should be completed by May of 2001. The Phase 2 design mimics the architecture and feel of the original building. It incorporates large windows and cast-in-place concrete, providing open floor plans flooded with natural light! City and/or mountain views are incredible from both buildings, and the park-front setting provides immediate access to running and bike trails, kayaking along the South Platte River, picnic pavilions, an outdoor amphitheater, and play area for animals that make lofts their home! The first new housing in the current redevelopment of the Central Platte Valley, the Flour Mill project helped initiate the transformation of the "no-man's land" between I-25 and downtown Denver into a vital area. This project launched residential development in this once-neglected area, and now serves as its cornerstone.

Standard Flour Mill loft interiors include hardwood floors, solid wood cabinetry, high ceilings, enormous windows, tile countertops, gas ranges, secured parking, and central air conditioning. The new building hosts a common roof-top deck for residents of both buildings.

Each of the following attractions are within easy walking distance to the Flour Mill: Coors Field, Pepsi Center, Bronco Stadium, shops and restaurants of Lower Downtown, Union Station and the Ski Train, Colorado's Ocean Journey, the Children's Museum, and of course, the South Platte River and Cherry Creek. Access to I-25 is convenient, with the 20th Street intersection located just a block away.

Dana Crawford, known as one of the most influential women in the history of Colorado, has been the heart and soul for the Flour Mill Lofts. Her contribution to the City started in 1965 with the restoration of Larimer Square. This project, which changed the fabric and energy of Downtown Denver took over 20 years to complete. Shortly thereafter, her company began to develop the first lofts in the Lower Downtown historic neighborhood. She completed the Edbrooke Lofts in 1991, and the Acme Lofts in 1993. These renovations were the start of the Loft lifestyle that has become such a great part of the City of Denver. As a preservationist and lover of Denver history, she continues to be a pioneer and maverick - her new area of emphasis being the Central Platte Valley - Denver's newest frontier!

At the time of this article, two of the Flour Mill Loft units remain unsold. For additional information or to schedule a private showing, contact Kentwood City Properties at 303-820-2489 or visit their website at www.kentwoodcity.com. Kentwood City Properties is a supporter of the Greenway Foundation, and sponsor of the Summer of 2001 Greenway Foundation Summer Concert Series. Associates of Kentwood City Properties will team with residents of the Flour Mill Lofts to participate in the Foundation's NIMBYFest cleanup of the River this September.

Waterside Lofts to Splash Down in LoDo

By Mark Beyerle,
Director of Marketing

Waterside Partners and Denver Realty Services, Inc. are working together to construct an exclusive, 160 unit loft home complex in the heart of Lower Downtown. Located at 14th & Wewatta, Waterside Lofts will sit directly on the banks of Cherry Creek.

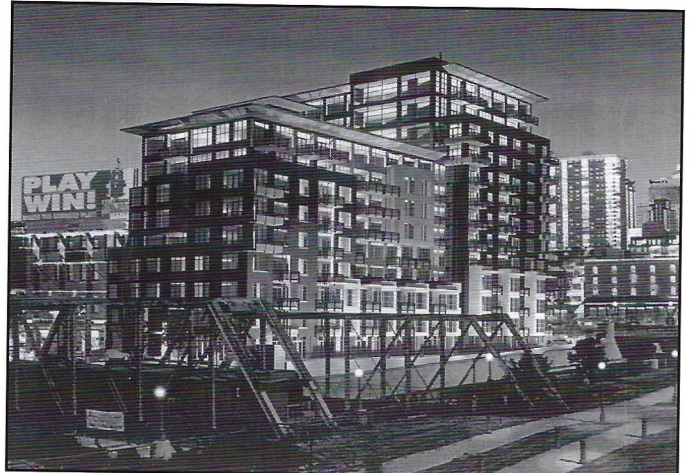
Designed by OZ Architects Waterside Lofts will offer access to the many miles of walking and biking trails along Cherry Creek. "We took full advantage of the incredible views that the site offered," says building designer Kelly Davis of OZ Architects. "The large windows and oversized decks create beautiful views of the Rocky Mountains and the Denver City Skyline."

According to Waterside developer Ray Suppa, "The architects have delivered a building unlike anything in LoDo. They've created bright, open units through the use of glass and space." OZ Architects received the coveted "Company of the Year Award" in 2000.

With numerous competitive projects entering the market, Waterside is fortunate to have a unique location in Lower Downtown. "We are the only new development with a creekside location. Waterside is easy walking distance to Coors Field, Larimer Square, Punt The Creek, Colorado's Ocean Journey, Elitch Gardens, the Denver Center for the Performing Arts, the Pepsi Center and the 16th Street Mall" says Paul Stann, principal and head of construction for Waterside.

Amenities in the new 160 unit development will include an expansive private fitness center, meeting room, business center for sending & receiving faxes or making copies, underground parking and a 24-hour lobby attendant. "We'll have three high speed elevators, DSL internet capability, and private, underground storage spaces for owners."

Waterside also plans to raise the standard on interior loft finishes in LoDo. According to Pamela Ursum, Waterside's on-site interior design consultant, "We'll feature granite and limestone countertops, European kitchen cabinetry and imported bamboo hardwood flooring, all as standard features. Kitchens will have curved stainless steel fronts with gas ranges, and the balconies include hook-ups for gas barbecues."



Rendering courtesy of Waterside Lofts

Waterside Lofts Come to LoDo!

Waterside Lofts is being exclusively listed by Denver Realty Services, Inc. (DRS). According to DRS president Tammy Beyerle, "the expansion of the Central Platte Valley is a significant factor in Lower Downtown's future. The demand for central housing is at an all time high, and inventory is trying to catch up. Baby boomers, empty nesters and downtown workers are increasingly looking for a maintenance free lifestyle without the hassles of rush hour and parking."

Waterside's developer Ray Suppa received national attention with his last project, Palace Lofts, which was the recipient of the Architect's Choice Award and the Gold Nugget Award. Palace Lofts served as the model for a similar development in San Diego and was featured in both the Wall Street Journal and the New York Times.

The Waterside showroom is located at 1401 Blake Street, Suite 300. Information can be obtained by calling 303-575-9500 or at the website www.watersidelofts.com.

West End Lofts

Cherry Creek's Newest Neighbor
By Jim Theye, Managing Broker -
Kentwood City Properties



Photo courtesy of Jim Theye

West End Lofts are located on the "quiet side of LoDo".

Situated on the beautiful Cherry Creek water way and bike path, the West End Lofts offer the best of downtown living. The choice location of the West End Lofts near Cherry Creek provides a wonderful gateway from the recreational venue of the Creek to the historic Lower Downtown residential neighborhood. This "quiet side of LoDo" is filled with some of the City's finest restaurants, coffee shops, bookstores, hotels, salons, and wine stores. It offers all of the amenities of a vital downtown district - retail, commercial, transportation, and residential uses. Gaining national and international awards, Lower Downtown Denver has evolved into one of the Country's finest examples of historic revitalization in an urban setting.

Known for years as the Denver Fabric Outlet, this historic warehouse in the heart of Lower Downtown is residential lofts. The original three-story building is constructed almost entirely of concrete and brick, with high ceilings and large windows. The conversion will add two levels of residential units in a style compatible with the original design. Many of the original architectural features have been saved - steel fire doors, pulleys and machine parts reminiscent of the building's past. The basement of the building will be converted to underground parking and storage for the residents. This blending of old and new has given buyers the choice of an authentic original loft feel or a more contemporary living space.

The finished lofts will boast spacious floor plans and standard features not found in other loft designs. Standard loft features will include hardwood floors, maple or cherry cabinets, granite countertops, large kitchen islands with double sinks, stainless steel appliances, exposed brick and concrete, private outdoor spaces, contemporary lighting, and covered parking. The buyer has a wide selection of upgrades available to customize their unit to fit their individual lifestyle.

Built in 1928, the warehouse at 1435 Wazee Street has been known as the Fabric Outlet for the Karman Western Wear Company for many years. A family business, Karman manufactured quality western clothing. One of their most popular lines was the Roper western shirts. The company was one of the longest-running manufacturing businesses in lower downtown Denver, and left in late 1999 in pursuit of a larger space which could house their entire business. The Developer, Loup Development Company has been highly regarded in Colorado real estate for over thirty years. Their commitment to quality, service and lasting value is reflected in its fine homes, condominiums, apartments, office buildings, and shopping centers. The company's extensive experience includes development of more than 6,000 residential homes in Colorado, Florida, Illinois, and Arizona. In Colorado, luxury single-family home communities include Canyon Villas, The Villas at Valley Country Club, The Greens, and The Ranch Country Club.

Renovation of the Karman Fabric Outlet building into the West End Lofts is scheduled for completion in the Fall of 2001. At the time of this article, five of the loft units remain unsold. For additional information or to schedule a private showing, contact Kentwood City Properties at 303-820-2489 or visit their website at www.kentwoodcity.com. Kentwood City Properties is a supporter of the Greenway Foundation, and sponsor of the Summer of 2001 Greenway Foundation Summer Concert Series.

Each year, the South Platte River Greenway receives a variety of improvements that continue to enhance this nationally recognized amenity. The following pages provide an overview of the projects that are currently underway or will be initiated over the next several months.

-Editor -

South Platte River Improvements

2001



Photo courtesy of MDG, Inc.

When completed, the Overland Corridor will feature a variety of riparian and recreational enhancements.

OVERLAND CORRIDOR IMPROVEMENTS NEARING COMPLETION

By Shaun Gordon, MDG, Inc.

The Overland Corridor project, located between Florida Avenue and Evans Avenue along the South Platte River, is underway and due to be completed by the end of this summer.

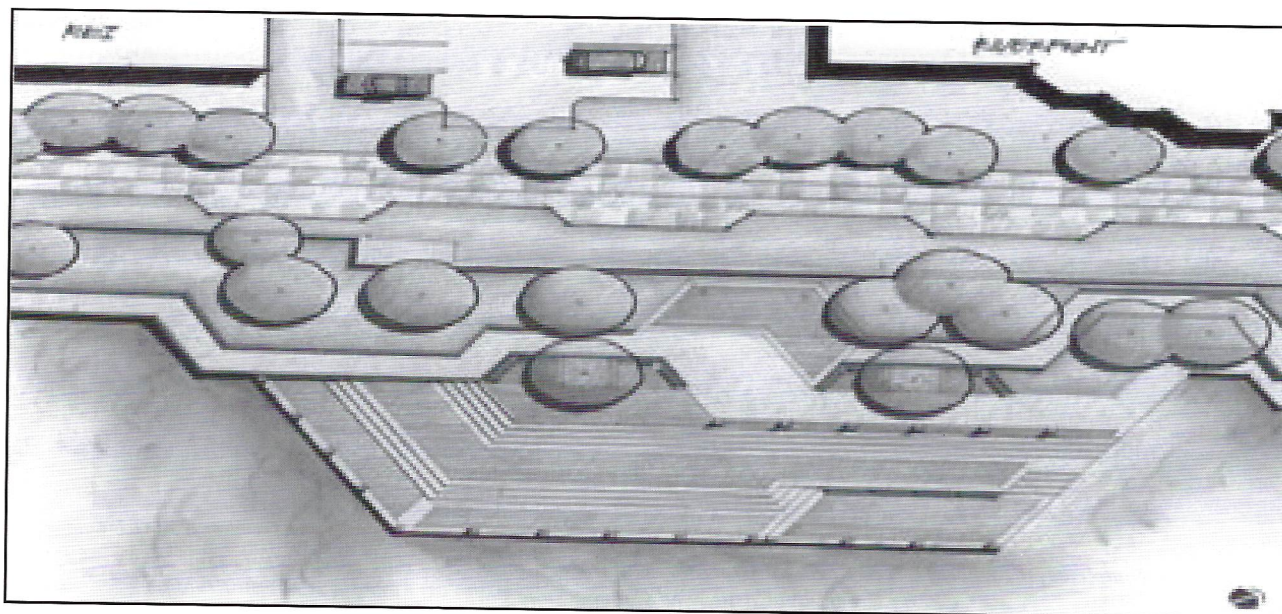
Two primary goals of this exciting project are to enhance the existing riparian areas and wildlife habitat as well as replacing the substandard eight-foot wide asphalt trail with a ten-foot wide concrete trail that meets current safety standards. The first phase of the project, comprising of the 10-foot wide concrete trail was completed last fall.

The second phase will be put in place over the summer months and will involve the installation of numerous native plantings throughout the site as well as several seating/rest areas. A safer access to the boat put-in/take-out area just upstream of Florida Ave. will also be installed. A large portion of the installation of the various plantings will be accomplished by the River Ranger crew along with several other youth work crews. A state of the art irrigation system will help ensure that once planted, these beautiful trees, shrubs and plants have the maximum opportunity to survive and thrive.

A three-year native wildflower seeding program for this reach is planned to provide additional color to the otherwise barren landscape as well.

This project has been made possible through the support of Great Outdoors Colorado, the City and County of Denver and the Denver Water Dept's Xeriscape program. The Greenway Foundation is proud to be partner in the remarkable transformation of this seven block corridor of the South Platte River.

Continued on the Next Page



Rendering courtesy of The Architerra Group

Improvements to Shoemaker Plaza and the area above the Plaza will get underway this coming fall.

THE BIRTHPLACE OF DENVER RECEIVES A MUCH NEEDED FACELIFT!

By Dean Pearson, The Architerra Group

The Architerra Group is currently working with the Greenway Foundation and the City and County of Denver to renovate Shoemaker Plaza at Confluence Park. The project will renovate the brick plaza and provide safety improvements to the South Platte River Trail as it weaves through the plaza. The old planters and broken lights will be replaced with new planting areas and modern bollards.

State of the art lighting will be placed above the plaza along the wall behind the plaza, which will provide illumination for the plaza and adjacent ramps during the evening. The improvements will also better define the edge of the South Platte River Trail and the edge of the River.

“
**Shoemaker
Plaza at
Confluence
Park is the
project that
started the
rejuvenation of
the South
Platte River
over 25 years
ago,**

Construction documents are being finalized and construction is scheduled for this coming fall. In addition, the scope of the project has increased to include the area above the plaza between 15th Street on the north, the new Speer Blvd. viaduct on the south, REI and the Riverpoint buildings on the west and the South Platte River on the east.

Shoemaker Plaza at Confluence Park is the project that started the rejuvenation of the South Platte River over 25 years ago. It is satisfying to see this important landmark restored to its original beauty.

”

Continued on the Next Page



Photo courtesy of MDG, Inc.

When completed, the Cherry Creek Regional Greenway will travel along the 24 mile corridor between Cherry Creek and Castlewood Canyon State Parks.

**CHERRY CREEK REGIONAL GREENWAY –
ARAPAHOE COUNTY
By Shaun Gordon, MDG, Inc.**

The efforts to complete the Cherry Creek Regional Greenway from Cherry Creek State Park to Castlewood Canyon State Park continue successfully. Over 20 miles of the 24-mile long corridor have been completed to date.

A one mile section of trail within the 2.5 mile long corridor in Arapahoe County was completed over the last year. The project included a 270-foot long bicycle/pedestrian bridge that crosses over Cherry Creek as well as creation of a new wetland area adjacent to the bridge.

“

**The native
wildflowers
along the
corridor will
not only
beautify the
reach but also
enhance the
existing
habitat.**

”

The Greenway Foundation and Arapahoe County hope to complete the remaining 1.5 miles of trail this year as well as instigate a three-year wildflower seeding and maintenance program for the entire stretch. The native wildflowers along the corridor will not only beautify the reach but also enhance the existing habitat.

The Foundation continues to enjoy a positive and productive relationship with the County and looks forward to making this long awaited amenity a reality.

SIX FLAGS ELITCH GARDENS!

TICKETS FOR ONLY \$20!

For the past three years, the good folks at Six Flags Elitch Gardens (SFEG) have helped the Greenway Foundation by contributing nearly \$10,000 of tickets to be used as a fundraising tool. You can take advantage of a great discount and help our summer youth employment and youth education programs at the same time!

The generosity of SFEG will allow us to sell tickets for only \$20 which will save you \$13 off of the normal \$33 ticket price.



Tickets may be used any day (including weekends) of the 2001 season. Adult and Children's ticket prices are the same and are lower than the advertised gate price. Order your family's tickets early. Tickets are limited and only available while supplies last.

Payment must be included with your order. Tickets will be mailed to you within 5-7 business days. If supply is sold out, you will be notified immediately.

ORDER YOURS TODAY!

Number of Tickets: # _____ at \$ _____ each= \$ _____

My check is enclosed for \$ _____

Please charge my credit card for the amount of \$ _____

•VISA _____ •Mastercharge _____ Expiration Date _____

•Credit Card Number _____

Your Name (as it appears on card) _____

Address _____

City _____ State _____ Zip _____

• Mail To: The Greenway Foundation
SFEG Tickets
1550 Platte Street,
Suite C
Denver, Co. 80202

providing construction administration for the Denver Skate Park, the City and County of Denver's first skatepark. The Denver Skate Park is located between 19th and 20th Streets along the South Platte River. It is approximately one acre in size, making it the largest outdoor public skatepark in the nation, is being constructed primarily of colored concrete and will be free and open to the public. Construction started in November of 2000.

Kevin Thatcher, a member of the design team who is a former professional skateboarder and the publisher of Thrasher magazine, came to Denver to observe the first concrete pour in the four-foot half-pipe. Kevin is working with the Architerra Group to give the contractor clear direction(s) about the importance of the construction tolerances. A quarter of an inch can make the difference between an awesome skating element or something that is unskateable.

Tierdael-Hallmark is the contractor that is building the skatepark. These two firms formed a joint venture for this project. Tierdael has experience with large scale projects in Denver, and Hallmark has experience building concrete skateparks. Together, they are working hard to make this one of the best skateparks in the country.

phase, several workshops were held with local skaters to gather their ideas for the Denver Skate Park. This invaluable input was integrated into the plan currently under construction. They have also been involved in the weekly construction meetings to lend a "skater's eye" to the construction process.

The Denver Skate Park is currently scheduled to be completed in mid-June. Watch for a huge grand opening celebration and plan to stop by this summer and watch the amazing athletic skills displayed by the many skaters enjoying this great addition to the South Platte River Greenway.

Continued on the Next Page



Photo courtesy of The Architerra Group

The Street Plaza, with a two level pyramid and driveways behind, will be surrounded by a variety of banks and curved ramps.

DENVER SKATE PARK— IF YOU BUILD IT, THEY WILL COME! By Dean Pearson, The Architerra Group

You have seen people lined up at the fence along 19th Street. They are probably skaters anxiously awaiting the opening of the Denver Skate Park. The Architerra Group is currently providing construction administration for the Denver Skate Park, the City and County of Denver's first skatepark. The Denver Skate Park is located between 19th and 20th Streets along the South Platte River. It is approximately one acre in size, making it the largest outdoor public skatepark in the nation, is being constructed primarily of colored concrete and will be free and open to the public. Construction started in November of 2000.

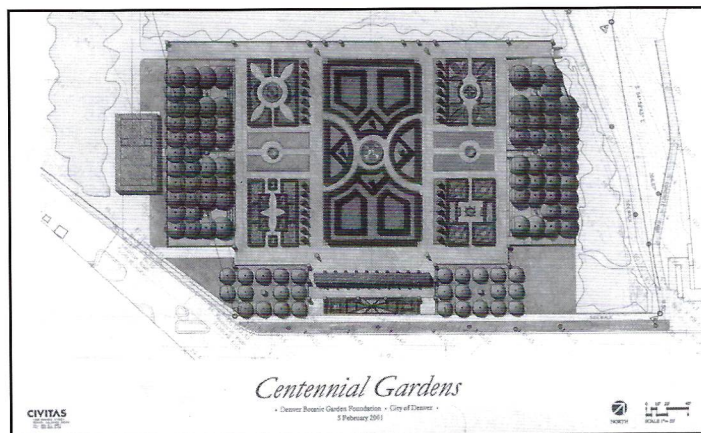
Kevin Thatcher, a member of the design team who is a former professional skateboarder and the publisher of Thrasher magazine, came to Denver to observe the first concrete pour in the four-foot half-pipe. Kevin is working with the Architerra Group to give the contractor clear direction(s) about the importance of the construction tolerances. A quarter of an inch can make the difference between an awesome skating element or something that is unskateable.

Tierdael-Hallmark is the contractor that is building the skatepark. These two firms formed a joint venture for this project. Tierdael has experience with large scale projects in Denver, and Hallmark has experience building concrete skateparks. Together, they are working hard to make this one of the best skateparks in the country.

Local skaters have been heavily involved in the design process since the inception of the project, and that involvement will continue throughout the construction phase as well. During the design phase, several workshops were held with local skaters to gather their ideas for the Denver Skate Park. This invaluable input was integrated into the plan currently under construction. They have also been involved in the weekly construction meetings to lend a "skater's eye" to the construction process.

The Denver Skate Park is currently scheduled to be completed in mid-June. Watch for a huge grand opening celebration and plan to stop by this summer and watch the amazing athletic skills displayed by the many skaters enjoying this great addition to the South Platte River Greenway.

Continued on the Next Page



Rendering courtesy of Civitas Inc.

Centennial Gardens will be created through a joint venture between the Mayor's South Platte River Commission and Denver Botanic Gardens.

MAYOR WEBB BREAKS GROUND ON NEW PUBLIC GARDEN AT CENTENNIAL PARK IN JOINT EFFORT WITH DENVER BOTANIC GARDENS

**By Kristen Connelly and Rob Proctor
Denver Botanic Gardens**

Mayor Wellington E. Webb has announced plans to create a 5-acre public garden at Centennial Park along the South Platte River at Speer Boulevard in conjunction with Denver Botanic Gardens. The new Centennial Gardens is projected to be complete by June 2002.

Mayor Webb and First Lady Wilma Webb were inspired to redesign Centennial Park after they visited the formal gardens of Versailles in France.

"We are looking forward to developing a world-class garden for our world-class city to enjoy for years to come," Mayor Webb announced. "It is rewarding to partner with the creative staff at Denver Botanic Gardens to design this amazing garden. Denver Botanic Gardens has become a great resource to the community and they were an obvious choice to be part of the team to develop a formal public garden with a Colorado palette."

Denver Botanic Gardens will develop the formal garden in conjunction with Civitas Inc., the landscape architects for the project. The design for the garden will weave together a traditional French garden design with a Colorado plant palette that artistically reflects Colorado's unique landscape. The central panel will incorporate native shrubs, grasses, perennials, aromatic herbs and junipers.

“
**Mayor Webb
and First
Lady Wilma
Webb were
inspired to
redesign
Centennial
Park after
they visited
the formal
gardens of
Versailles in
France.**
”

Other highlights include four knot gardens, annuals and perennials in color themes, shady areas for strolling and gathering, as well as containers with beautiful and fragrant plants for seasonal color. The banks of the South Platte River will be planted with cottonwood and native species to further become part of a wildlife corridor.

Most of the plantings will be composed of low-water use plants, and no pesticides or herbicides will be used in its maintenance.

"This will be a significant garden for the community that emphasizes the importance of water conservation techniques and will highlight a beautiful palette of plants that are native to this region. It should inspire everyone in the community to use species that work well in Denver. We look forward to seeing mini Centennial Gardens springing up in our city," explained Brinsley Burbidge, Denver Botanic Gardens' Executive Director. "We are delighted to work with Mayor Webb on this project and to be a part of his vision for this great city."

Centennial Gardens is part of Mayor Webb's vision for enhancing the open space along the South Platte River.

Support The Greenway Preservation Trust!

Ensuring The River's Future

The Greenway Preservation Trust is a permanent endowment to protect and enhance the South Platte River, implement recreational and riparian improvements, provide youth education and youth employment programs, and sponsor free family oriented special events. Our goal is to raise \$5 million for the corpus of the Trust by 2004.

With **your** help we can show how the people of Metro Denver, armed with energy and purpose, can have a positive impact on their surroundings.

Individual

Your help is crucial in establishing a permanent endowment for the South Platte River and its tributaries. Help us preserve and enhance Denver's Greatest Natural Resource and ensure that the programs and events that help accomplish this goal receive funding well beyond our lifetime.

Yes! I want to help establish the Greenway Preservation Trust.

- | | | | |
|--|---|---|---|
| <input type="checkbox"/> \$25 Friend | <input type="checkbox"/> \$50* Advocate | <input type="checkbox"/> \$100** Family | <input type="checkbox"/> \$250 Associate |
| <input type="checkbox"/> \$500 Sustainer | <input type="checkbox"/> \$1,000 Patron | <input type="checkbox"/> \$5,000 Benefactor | <input type="checkbox"/> \$10,000 Partner |

* Contribute \$50 and get a free Greenway Preservation Trust T-shirt!

** Contribute \$100 or more, receive Punt The Creek tickets for two and a T-shirt!

☐ I would like to make a gift through my estate planning. Please contact me about how I can designate the Greenway Preservation Trust through a **planned giving** instrument.

Check with your company to see if they will match your gift. Please make your check payable to The Greenway Preservation Trust, 1550 Platte Street, Suite C, Denver, Colorado 80202. Your contribution is tax deductible. Thank you.

Name _____ Address _____
Phone No. () _____ Best time to call: _____ Home _____ Office _____

Company

Consider becoming a charter benefactor of the **Greenway Preservation Trust**. If your company pledges an amount of \$10,000 or more, your company's name will be added to a beautiful bronze plaque placed along the River at Confluence Park. Please call **303.455.7109 x 2** to find out how your company can support these important efforts.

To date, the Greenway Preservation Trust has received over \$2 million in commitments.

With your help, we can reach our goal of \$3 Million by the end of 2001!

Please take a moment and a pledge your support today.

For more information about the Greenway Preservation Trust, check our website at www.greenwayfoundation.org.

Board Of Directors

Chairman/Treasurer
Joe Shoemaker

Vice Chairman
Bill Avery

Jon Bridges
Larry Elrod
John Moran
Eldon O'Neal
Paula Sandoval
Kip Stastny

Executive Director
Jeff Shoemaker

Associate Director
Doug Ellis

"A
River is more
than an amenity,
it is a
Treasure."

Justice Wm. O Douglas

SUMMER CALENDER OF EVENTS

MARK YOUR CALENDERS FOR A
SUMMER OF FUN!

•PUNT THE CREEK CONCESSION OPENS

Saturday, June 2nd

- Normal Hours of Operation-4:00 pm-Dusk (Sundays-1:00pm-6:00pm)
- Tuesday-Thursday-Rides by reservation only
- Friday-Sunday-Rides by reservation or Walk-Up
- Closed-Monday
- Additional hours/discounts for groups of 12 or more
- For information or reservations call 303-893-0750.

CONFLUENCE CONCERTS

- Confluence Park
- All concerts begin at 6:30pm and conclude at 8:00pm
- July 5.....Jakarta (Jammin 92.5)
- July 12.....Liquid Rythums (MIX100.3)
- July 19.....Kool Kats (KOOL105)
- July 26.....The Fab Four

RIVERFEST 2001.....Sat., August 11th

•PUNT THE CREEK CONCESSION CLOSSES

Sunday, August 26th

NIMBY FEST.....Sat., Sept. 29

- Begins/Ends at Fishback Landing Park
- 8:00am-12:00pm, Metro Riverfront Volunteer Banquet afterwards at Fishback Landing (next to Colorado Ocean Journey).
- Volunteers for our special events are always needed.
- If interested, call **303.455.7109 x2** and leave your name and phone number; or check out our website at www.greenwayfoundation.org.

FRIEND OF THE RIVER AWARD DINNER

.....Tuesday, November 13th, 7:00 pm at Colorado's Ocean Journey

Preservation Trust

Co-Chairs
William Armstrong
Morgan Smith

Honorary Chair
Mayor Wellington
Webb

Steering Committee

John Ausburn
Chips Barry
George Beardsley
Bar Chadwick
Alan Charnes
Dana Crawford
Casey Davenport
Sam Gary
Tom Grimshaw
Barry Hirschfeld
Dick Kirk
Kendall Richards
Ken Salazar
Mark Smith
Jim Theye
George Thorn
Richard Todd
Bob Voltz
Anne Warhover
Ken Wright



The Greenway Foundation

1550 Platte Street,
Suite C

Denver, Co. 80202

303-455-7109 Fax 303-455-7234

www.greenwayfoundation.org

Design Donated by

 **SDS Designs**
303.358.6696

 Printed on
Recycled Paper

