

# DENVER — YOU HAVE A CHOICE FOR YOUR RIVER . . .

It is becoming increasingly clear that the only way communities can continue to improve their physical environments — particularly the revitalization of their urban resources — is to **creatively fund these projects themselves**. Over the past five years, an increasing trend has developed that emphasizes regional private funding. Foundations and corporations are interested in cleaning up the backyards of their own facilities and marketing

this project has utilized three main philosophies in its funding to date:

- Broad base of funding support
- Cost efficient construction and management
- Creative investment of funds raised

The amount raised for the project to date is about \$8 million — more than a quarter of that has come from the private sector. Close to 600 individual funders have been

CHAIRMAN  
Joe Shoemaker

TREASURER  
Ted Bendelow

Dana Crawford  
Hiawatha Davis  
Marjorie Hornbein  
Pat McClearn  
Philip Milstein  
Dan Trujillo  
John Zapien

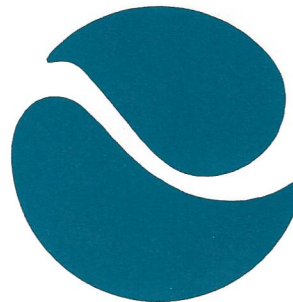
MAYOR OF DENVER  
William McNichols, Jr.

ADMINISTRATIVE ASSISTANT  
Jan Johnson

DEVELOPMENT & GRANTS  
COORDINATOR  
Urban Edges Inc.  
Rick Lamoreaux  
Bob Searns  
Joan Mason

"A  
river  
is more than  
an amenity;  
it is  
a  
treasure."  
Justice Wm. O. Douglas

Vol. 1 No. 3  
Spring 1981



## THE GREENWAY NEWS

areas rather than providing nationally focused funding of projects.

Now that the government funding picture looks hazy in both short and long terms for matching federal assistance (substantial cuts in the Heritage Conservation and Recreation Service's Land and Water Conservation Fund, and CETA programs, for example), communities more and more must look inward to assess their needs and capabilities for funding community improvements. Denver has, in the Platte River Greenway, a unique opportunity to finish a process that meets the ever-increasing needs of our citizens. Fortunately for our region, the Greenway is almost completed through Denver.

Through an unusual, effective and innovative process,

involved in the process with donations ranging from \$5 to \$780,000. A true constituency has been formed around the river. Nearly \$2 million needs yet to be raised to complete the project.

More than 80% of the Greenway as originally conceived almost seven years ago has been constructed. Ten miles — of trail and 16 riverfront parks are ready for use this summer season of 1981. The current needs for completing the project are listed below. We'd like to encourage you to get involved in one of these areas of funding. Your donations will make you a member of the Greenway Foundation and a part of a very exciting process — that of "Returning the Platte to the People."\*

## THE EXCITING STORY OF THE GREENWAY

\***Returning the Platte to the People** is the title of a new and exciting 128-page book by Joe Shoemaker with Leonard Stevens. Within its pages, the story of one of the most extraordinary examples of urban revitalization in America unfolds, an effort directed by the Greenway Foundation with the assistance of an enthusiastic city — Denver. Containing scores of photos (including 16 full color pages), sketches and maps, the book is available from the Greenway Foundation, 1421 Court Place, Denver, Co. 80202. The \$10 per copy price includes postage, and \$5 of this amount is a tax-deductible contribution to the Greenway Foundation. Order your copy today.

## GREENWAY CORPORATE SALUTE

Recent donations toward completion of the Greenway have included some especially creative involvement. Space precludes our mentioning the hundreds of

contributions received, but the Foundation would like to particularly thank the following businesses and corporations for their innovative help this year:

- **Scienturfc Sod Farms** — Donation of sod and volunteer assistance to enable completion of the landscaping at Pasquinel's Landing.
- **Dana Kepner and Robinson Dairy** — A wood screen fence between 6th and 8th Avenues on the river's west bank.
- **Mission Viejo Corporation and Miller Lite Beer** — Sponsorship of the 1981 Great Relay Race, to be held May 30th.
- **Colorado Paint Company** — Donated paint and stain to refinish all the picnic tables, benches, and hike-bike bridges on the Greenway.
- **Gates Rubber Company Plant** — A volunteer effort by employees to clean the river's banks on April 25th.
- **My Brother's Bar** — Bringing classical music to the banks of the river, two "Concerts on the Green" will take place on July 13th and August 10th. Commemorative posters will be sold to benefit the Greenway's completion.
- **First of Denver** — Completion of the award-winning Greenway Graphics and Signage System.

# ADOPT-A-PARK PROGRAM FOR 1981

ITEMS TO "PURCHASE" WITH YOUR TAX DEDUCTIBLE DONATIONS TO THE GREENWAY FOUNDATION.

INDICATE THE AMOUNT OF DONATION YOU WOULD LIKE TO MAKE TOWARD YOUR EARMARKED ADOPT-A-PARK CHOICE AND SEND YOUR CHECK TO THE GREENWAY FOUNDATION, 1421 COURT PLACE, DENVER, COLORADO 80202. THANK YOU!



Completion of Pasquinel's Landing (West Bank at Evans).

**1. SOUTH TRAIL CONNECTION TO ENGLEWOOD** — Includes 4,600 feet of trail between Harvard and Dartmouth Avenues and all the improvements along the river.

Construction of the South Trail Connection will close the final gap between the City of Denver and its neighbors to the south: Sheridan, Englewood, Littleton and the Chatfield State Recreation Area. Completion

of this last 4,600 feet of trail between Harvard and Dartmouth Avenues (south city limit) will realize the Greenway's original goal of a border-to-border bicycle and pedestrian system, virtually devoid of automobile intrusions. It will serve multi-use purposes, both recreational and bicycle-commuting alike.

	ESTIMATED COSTS	Indicate Your Adopt-A-Park Choice
A. Design and engineering	\$ 20,000	_____
B. Cleanup (lump sum)	\$ 40,320	_____
C. Rough grading (6,000 c.y. @ \$3.90 per)	\$ 28,080	_____
D. Fine grading (17,300 s.y. @ \$.60 per)	\$ 12,456	_____
E. Hydro-mulch and seeding (3.5 ac. @ \$840 per)	\$ 3,528	_____
F. Concrete pathway (4,125 s.y. @ \$19.20 per)	\$ 95,040	_____
G. Rock riprap (2,715 c.y. @ \$24.00 per)	\$ 78,192	_____
H. Sitting-area paving (1,350 s.f. @ \$6.00 per)	\$ 9,720	_____
I. Timber retaining wall (860 l.f. @ \$30.00 per)	\$ 30,960	_____
J. Wood railing (100 l.f. @ \$14.20 per)	\$ 1,704	_____
K. Electrical fixture renovation (lump sum)	\$ 3,600	_____
L. Benches (4 @ \$600 per)	\$ 2,880	_____
M. Traffic guard rail (840 l.f. @ \$18.00 per)	\$ 18,144	_____
N. Safety post (2 @ \$240.00 per)	\$ 576	_____
O. Contingency	\$ 29,000	_____
<b>TOTAL ESTIMATED PROJECT COST</b> .....	<b>\$374,200</b>	_____

(ck. enclosed)

**2. FRONTIER PARK** — South of Evans Avenue at the Platte River

Frontier Park is an existing five-acre park area on the east bank of the river. As a part of the Greenway development program, a two-acre area on the

opposite bank is being made available for a unified park development with the river as its central theme. In total, some **10 acres of park** and river area will be included.

	ESTIMATED COSTS	Indicate Your Adopt-A-Park Choice
A. Mini-rest area (concrete pad, water fountain, bench and bike rack)	\$ 2,820	_____
B. Irrigation system (quick couple)	\$30,000	_____
C. Picnic tables (3)	\$ 3,600	_____
D. Bench (1)	\$ 250	_____
E. Blue Grass sod (3 acres seed)	\$ 6,000	_____
F. Trees and shrubs (40 @ \$60 each)	\$ 2,400	_____
<b>TOTAL ESTIMATED PROJECT COST</b> .....	<b>\$45,070</b>	_____

(ck. enclosed)

3. OVERLAND PARK — Landscaping

- A. Landscaping at \$50 per tree x 25

ESTIMATED COSTS  
\$ 1,250

Indicate Your Adopt-A-Park Choice

(ck. enclosed)

4. HABITAT PARK EXHIBIT CENTER — West bank, South of Alameda & the Platte.

Habitat Park is more than just an open space, as it will provide a unique educational experience. With the cooperation of the Denver Public Schools, the

C.S.U. Extension Service and others concerned about Colorado's fragile environment, Habitat Park will offer a series of restored natural environments demonstrating several of Colorado's ecological zones ranging from "riparian" to "montane."

- A. Exhibit Center cost estimate (900 sq. ft.)
- B. Design & Engineering
- TOTAL ESTIMATED CENTER COST .....

ESTIMATED COSTS  
\$37,260  
\$ 7,452  
\$44,712

Indicate Your Adopt-A-Park Choice

5. GATES-CRESCENT PARK — West bank of river across from Mile High Stadium

The largest park in the Greenway System will present 13 acres of open space to the downtown area of Denver. Made possible through grants from the Gates Foundation with assistance from the Piton Foundation,

this park will meet the deficiencies in open space so sorely felt by the downtown area. Gates-Crescent Park is the future location of the Children's Museum. Landscaping needed for Phase I is estimated to cost \$65,000, including irrigation and sodding.

- A. Donate \$50.00 per tree

TREE(s)

AMOUNT ENCLOSED

\$

6. CENTENNIAL PARK

Within walking distance of downtown and Denver's densely populated northwest neighborhoods, Centennial Park will offer readily accessible and sorely needed active recreation facilities, including a ballfield, a large meadow and innovative play structure for children. Other support facilities will include landscaping,

benches and picnic areas. Centennial Park will be directly linked to the ten-mile Greenway trail system for easy bicycle and pedestrian access. Parking will be offered at the recently developed Fishback Landing on the opposite bank of the river and at other nearby park sites.

ALTERNATIVE #1

(Native seeding and no irrigation)

- A. Grading, excavation, embankment for ballfield and earthen screening berm (2 feet of fill)
- B. Trees and shrubs
- C. Picnic tables on site (4)
- D. Benches (4)
- E. Path to play structure
- F. Fencing (to screen railroad yards)
- G. Timberform play structure

ESTIMATED COSTS  
\$212,300  
\$ 5,500  
\$ 6,600  
\$ 1,100  
\$ 13,200  
\$ 12,100  
\$ 7,800

Indicate Your Adopt-A-Park Choice

+ 10% contingency  
TOTAL PROJECT

\$258,600  
\$ 25,860  
\$284,460

(ck. enclosed)

Mountain Bell Contribution  
Denver Foundation  
TOTAL NEEDED

-25,000  
-7,800  
\$251,660

**ALTERNATIVE #2**

(Including irrigation and sod)

- A. Irrigation system
- B. Sodding for 6 acres  
+ 10% contingency
- TOTAL PROJECT
- Mountain Bell Contribution
- Denver Foundation
- TOTAL NEEDED

ESTIMATED COSTS
\$200,200
\$ 79,860
\$ 28,006
<hr/> \$596,046
-25,000
-7,800
<hr/> <hr/> \$563,246

Indicate Your Adopt-A-Park Choice

---

(ck. enclosed)

**7. BOATING IMPROVEMENTS**

On what was once little more than an open sewer, rafters, canoeists and kayakers now enjoy a quality run on the restored South Platte from 6th Avenue to the north city limits. An exhilarating run, the boating course passes through three man-made chutes as well as natural rapids and calmer waters. Although challenging

in places, the entire stretch is boatable by a novice with basic whitewater skills.

To improve the remaining 3.5 miles of the river to "boatable" quality, which includes removing rubble, modifying existing dams and generally cleaning the riverbed, the approximate cost is: \$479,000, or a cost of \$26.00 per foot.

- A. Boating Improvements (\$26.00 per lin. ft.)

ESTIMATED COST
\$479,000

Indicate Your Adopt-A-Park Choice

---

(ck. enclosed)

**8. NORTH END TRAIL — 50th Avenue to North City Limit (Franklin)**

The quarter-mile trail segment proposed here for Denver is the key link tying the city's Greenway system to Adams County. With similar connections at Denver's

south city limit, a 100-mile river trail network will ultimately result — one of the most extensive systems anywhere in the nation.

The costs for Denver's North End Trail connection are as follows:

- A. Cleanup
- B. Rough grading
- C. Fine grading
- D. Rock riprap
- E. Wooden railing
- F. Utility treatment
- G. Concrete hike/bike trail (1810 l.f.)
- H. Benches (2)
- I. Bank mulching and seeding
- J. Engineering and inspection

ESTIMATED COSTS
\$ 16,422
\$105,557
\$ 4,968
\$ 24,840
\$ 4,830
\$ 20,700
\$ 29,973
\$ 414
\$ 1,518
\$ 9,977
<hr/> \$124,200

Indicate Your Adopt-A-Park Choice

---

(ck. enclosed)

**BIKERS TAKE NOTICE!**

In an ongoing effort to make the 10-mile Platte trail an effective recreational and commuter bikeway through the heart of Denver, the Greenway Foundation is working with the Urban Drainage and Flood Control District and Urban Edges Open Space Management, Inc. to accomplish a once-weekly sweeping of the trail system this season. Using an FMC mechanized sweeping machine, maintenance crews will regularly patrol and sweep the Platte trail from Harvard to 50th Avenues, the Cherry Creek trail from Confluence Park to the Denver Country Club, and Lakewood Gulch from the Platte to Rude Park.



# 1981 GREAT RELAY RACE/MAY 30TH — 50 MILE RELAY

Sponsorship by the Mission Viejo Corporation and Miller Lite Beer will enable us to repeat last year's very successful Great Relay Race along the South Platte River corridor. The race will start at 9 am with a south segment starting at the Chatfield State Recreation Area and a north segment starting at Barr Lake State Park. Corporate and individual teams of eight people each will run, bike, canoe, kayak, skate, and otherwise make their way to Confluence Park. The winners of the race last year were teams from Wright-McLaughlin Engineers (South) and the Environmental Protection Agency (North). Winning times

were under 3 hours for the 25+ mile distance of each segment.

Entry fee for the event is \$7.50 per person. There will be a special "Super Jock" competition enabling one person to do it all. (\$15.00 entry.) This fee is a tax-deductible donation to the Greenway Foundation and will be used to complete the trail and improvements along the river.

The race will be followed by the presentation of awards to the winners at Confluence Park. Free beer, food, commemorative gifts and music await all competitors at the finish line festivities. All businesses and individuals are encouraged to put together teams made up of runners, bikers, kayakists, horseback riders, roller skaters and walkers. If you want an entry form sent to you, please fill out the following information and send it to:

CHECK ENCLOSED \$ \_\_\_\_\_

Urban Edges, Inc.  
GREAT RELAY RACE  
1731 Emerson Street  
Denver, Colorado 80218

COMPANY NAME \_\_\_\_\_

CONTACT PERSON \_\_\_\_\_

ADDRESS \_\_\_\_\_

PHONE # \_\_\_\_\_

SOUTH SEGMENT TEAM \_\_\_\_\_

NORTH SEGMENT TEAM \_\_\_\_\_

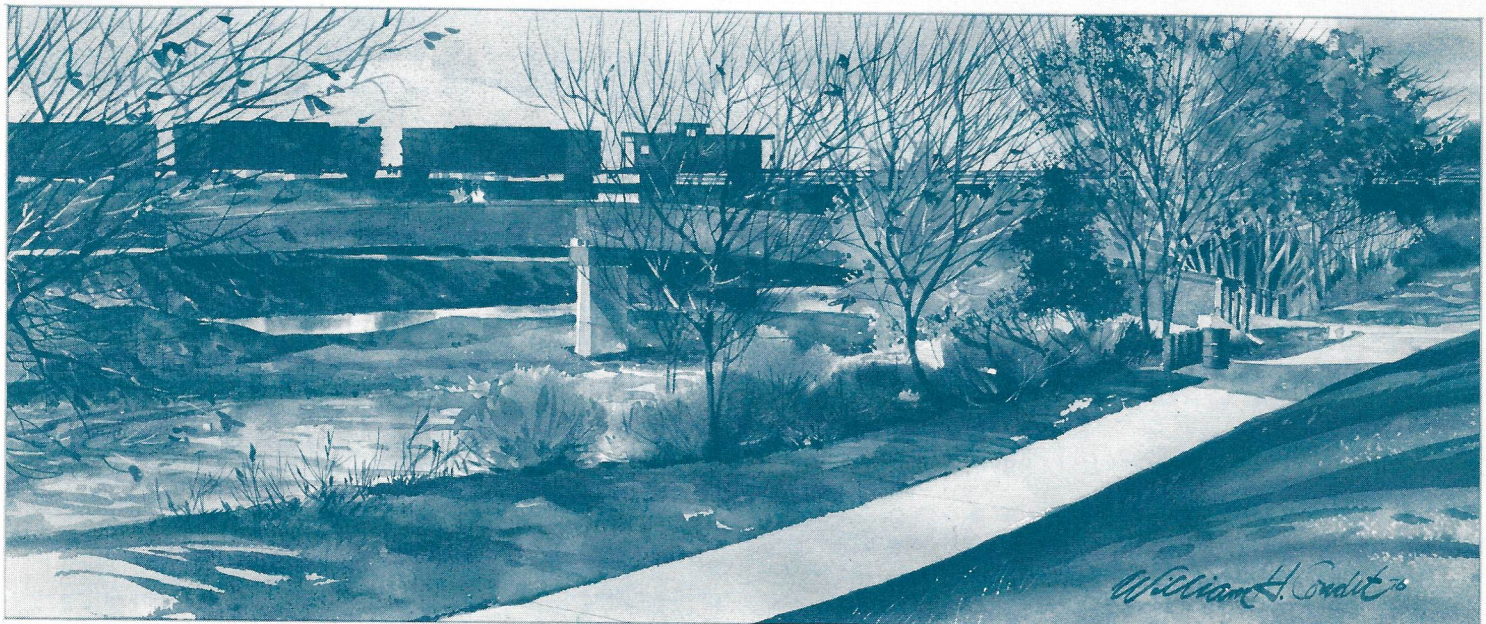
DO YOU NEED OUR ASSISTANCE IN SUPPLYING TEAM MEMBERS FOR YOU? \_\_\_\_\_

---

## "SEASONS OF THE PLATTE"

Due to the popularity of "Winter on the Platte," we've issued the second in this series of four limited-edition

lithograph prints by watercolorist William Condit. Donors making a contribution of \$250 or more to the Greenway Foundation for 1981 will automatically receive a numbered print as a token of the Foundation's appreciation for your generosity.



# 1981 GREAT RELAY RACE/MAY 30TH — 50 MILE RELAY

Sponsorship by the Mission Viejo Corporation and Miller Lite Beer will enable us to repeat last year's very successful Great Relay Race along the South Platte River corridor. The race will start at 9 am with a south segment starting at the Chatfield State Recreation Area and a north segment starting at Barr Lake State Park. Corporate and individual teams of eight people each will run, bike, canoe, kayak, skate, and otherwise make their way to Confluence Park. The winners of the race last year were teams from Wright-McLaughlin Engineers (South) and the Environmental Protection Agency (North). Winning times

were under 3 hours for the 25+ mile distance of each segment.

Entry fee for the event is \$7.50 per person. There will be a special "Super Jock" competition enabling one person to do it all. (\$15.00 entry.) This fee is a tax-deductible donation to the Greenway Foundation and will be used to complete the trail and improvements along the river.

The race will be followed by the presentation of awards to the winners at Confluence Park. Free beer, food, commemorative gifts and music await all competitors at the finish line festivities. All businesses and individuals are encouraged to put together teams made up of runners, bikers, kayakists, horseback riders, roller skaters and walkers. If you want an entry form sent to you, please fill out the following information and send it to:

CHECK ENCLOSED \$ \_\_\_\_\_

Urban Edges, Inc.  
GREAT RELAY RACE  
1731 Emerson Street  
Denver, Colorado 80218

COMPANY NAME \_\_\_\_\_

CONTACT PERSON \_\_\_\_\_

ADDRESS \_\_\_\_\_

PHONE # \_\_\_\_\_

SOUTH SEGMENT TEAM \_\_\_\_\_

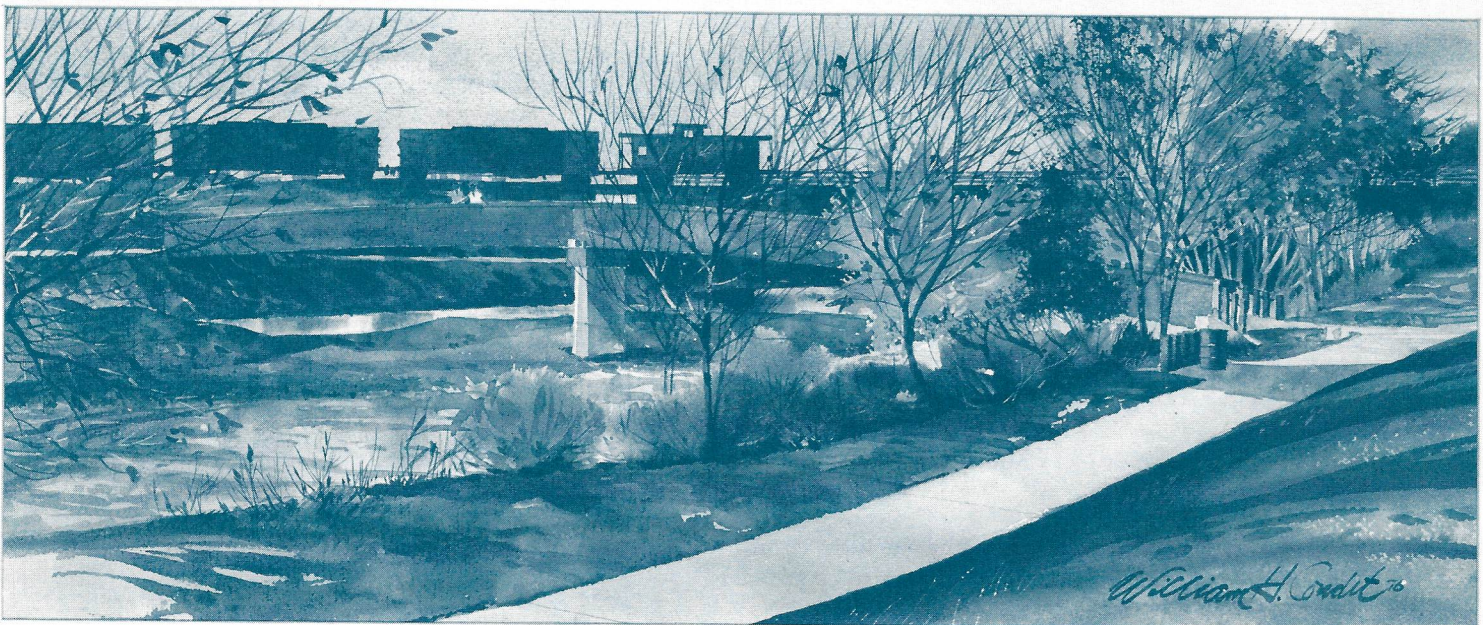
NORTH SEGMENT TEAM \_\_\_\_\_

DO YOU NEED OUR ASSISTANCE IN SUPPLYING TEAM MEMBERS FOR YOU? \_\_\_\_\_

## "SEASONS OF THE PLATTE"

Due to the popularity of "Winter on the Platte," we've issued the second in this series of four limited-edition

lithograph prints by watercolorist William Condit. Donors making a contribution of \$250 or more to the Greenway Foundation for 1981 will automatically receive a numbered print as a token of the Foundation's appreciation for your generosity.



# PROGRESS REPORT

Construction of the trail from Evans to Harvard, together with a new wooden hike-bike bridge, has just been completed. Landscaping of an expanded Frontier Park on the river's west bank is slated for later this year.

Gates-Crescent Park, Phase I, is nearing completion. Facilities include a sand volleyball court, parking area, trail connections, picnic facilities, and a large wooden play structure for children of all ages. Landscaping of Phase I is scheduled later this year, with Phase II and the Children's Museum following.

The innovative Clivus-Multrum restrooms at Pasquinel's and Fishback Landings are now out to bid. Construction is expected to begin late this spring.

Design work is nearing completion on the Northwest Neighborhood Connection, a trail linkage from Riverfront Park at 19th St. under the Valley Highway to the densely populated residential neighborhoods of northwest Denver. Construction is expected to begin this summer.

The Zuni Boat Chute, removed from the river for maintenance last fall, has been reinstalled, making continuous boating possible from Frog Hollow at 8th Avenue to Globeville Landing at 38th Street.



Donated sod being placed in Pasquinel's Landing. (Evans & The Platte River)

## RAFT THE PLATTE —

A comprehensive rafting program will be operated on the Platte through Denver beginning May 30th and continuing through Labor Day this year. This program offers a unique opportunity for the public to see the Greenway. Rafting along the South Platte River in Denver, you will

experience the serenity and whitewater of a mountain stream.

A professional rafting outfitter will operate the program for the Greenway this season with a portion of the fee for each raft ride returning to the Greenway Foundation to continue the river improvements. Call 333-7831 (9 AM to 6 PM).

THE GREENWAY FOUNDATION  
1421 COURT PLACE  
DENVER, CO. 80202  
(303) 623-2252

Non-Profit  
U.S. Postage  
PAID  
Denver, Colorado  
80202  
Permit #489

## 1981 GREENWAY CALENDAR OF EVENTS

April 18-19  
Colorado Whitewater's Annual Downtown Denver  
Slalom  
May 3  
United Bank Marathon (861-8811 for information)  
May 15-Sept. 15  
Greenway Foundation Trail Ranger Program  
May 30-Sept. 4  
Rafting Program — (333-7831 9 AM to 6 PM for  
information and reservations)  
May 30  
THE GREAT RELAY RACE — 50-mile relay of 8-person  
teams, (831-0920 for information)  
July 13  
"Concert on the Green" #1 — Classical music, wine  
and cheese at Confluence Park, sponsored by My  
Brother's Bar and KVOD Radio (623-2252)  
August 10  
"Concert on the Green" #2 —  
September  
Fundraising Run on the Greenway (interested  
sponsors, please call 831-0920 for information)

RECEIVED

MAY 19 '81

075 078000000000PR00008761  
JOE SHOEMAKER  
1421 COURT PL  
DENVER CO 80202